



CM Batch Photo Resizer

Table of Contents

Introduction	3
<i>System Requirements</i>	3
<i>Purchase Information</i>	3
Program Windows	4
Main Window	4
<i>Application Toolbar</i>	4
<i>Photo File List</i>	6
<i>Saving Settings</i>	6
<i>Photo Preview</i>	6
<i>Status Window</i>	7
Preferences - Settings Tab	8
<i>Image Settings</i>	8
<i>Filename Renaming Settings</i>	10
<i>Colorspace Profile Support</i>	11
Preferences - Transformation Tab	12
<i>Effects Settings</i>	12
<i>Text Caption Settings</i>	14
How To	15
<i>Step by Step</i>	15
Things to Note	16
Revision History	17
<i>Existing issues</i>	18

Introduction

First, I would like to thank you for purchasing CM Batch Photo Resizer. I hope that it would serve you well into the foreseeable future.

CM Batch Photo Resizer is a major upgrade to our earlier application, MacImage Resizer. We developed MacImage Resizer way back in 2001 during our business infancy and at the launch of Mac OS X. It was an exciting time for us to be developing for both the Mac and Windows platform. However, due to physical and financial constraints, we decided to concentrate on the Windows platform.

However, over the last few years, with the introduction of the iPhone and then the iPad from Apple, it got us thinking about returning to the Mac platform. What gave us the biggest push was the introduction of the Mac App Store which would certainly give us a ready market where we could introduce our applications. This time around, we have gained an additional 10 years of experience in the photo imaging development and with the advancement made in Mac OS X, we are certainly happy to be back.

Our earlier MacImage Resizer was a simple application which merely resizes photos and nothing else. CM Batch Photo Resizer, on the other hand, comes with features which we have seen our clients use extensively such as converting image format, performing manipulation on the photos, changing photo orientation and doing bulk file name renaming all in one interface. Our application now comes with a brand new easy to use interface which certainly is our pride.

We are happy to announce that CM Batch Photo Resizer is available on both the Mac OS X and Windows Platform.

As always, drop us an email at support@completemagic.com or support@batchimage.com if you discover any bugs or have any suggestions on how to improve CM Batch Photo Resizer. We would certainly love to hear from you.

System Requirements

Apple Mac	Windows PC
<ul style="list-style-type: none"> • Intel Based Mac running Mac OS X 10.6.6 and above • 20mb Harddisk Space Free • 2Gb RAM 	<ul style="list-style-type: none"> • Pentium 4 and above • Windows XP and above • 20mb Harddisk Space Free • 2Gb RAM

Purchase Information

Mac Version is available on the Mac App Store.

Windows Version is available on our website <http://www.batchimage.com>

Program Windows

Here are some of the application screens which you would be working with.

Main Window

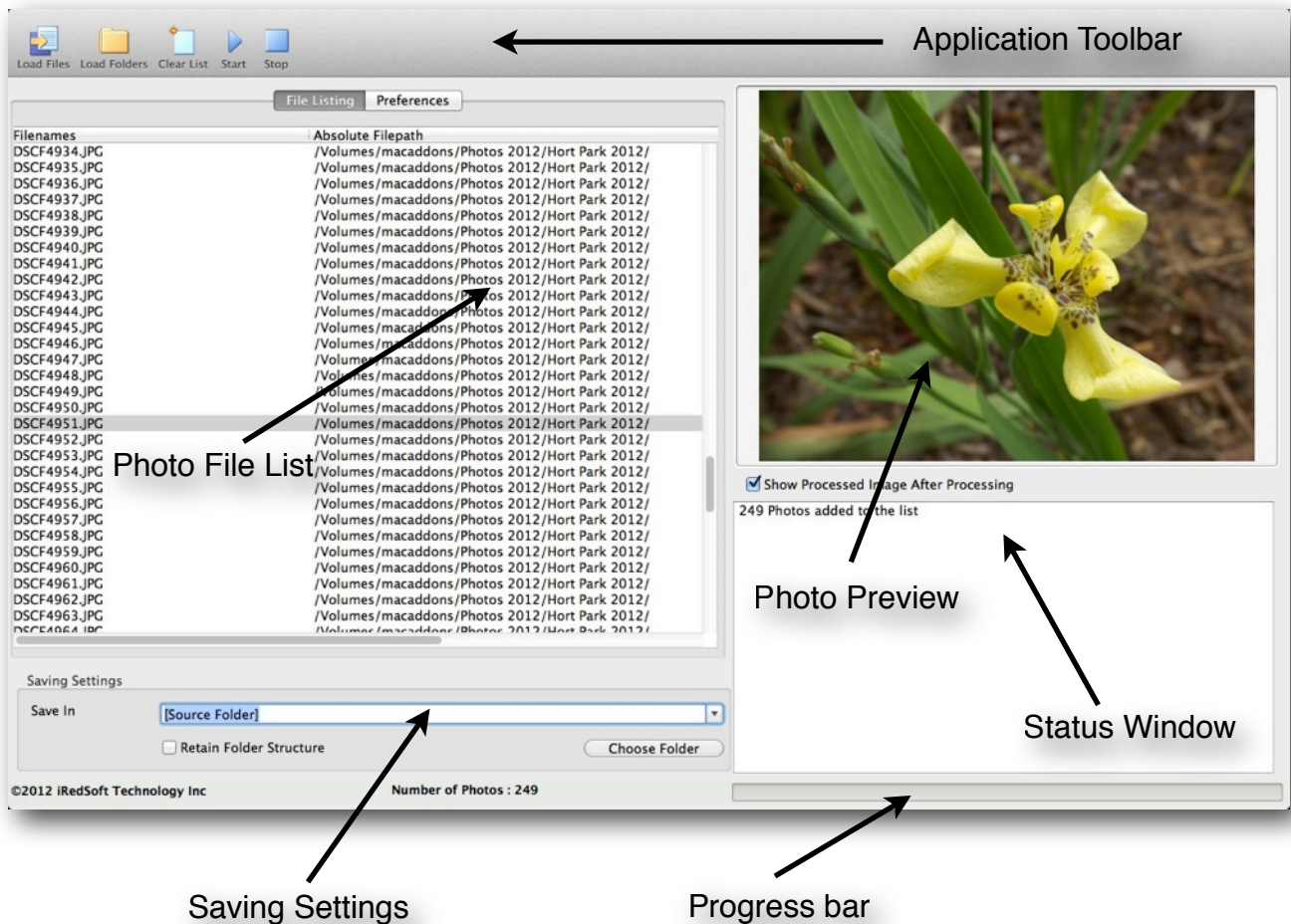


Figure 1 - Main Program Screen

The main window is where you would be doing most of the photo resizing in. There are five components to this screen - Application Toolbar, Photo File List, Saving Settings, Photo Preview and Status Window

Application Toolbar

The Application Toolbar contains 5 buttons which controls all the operations of the CM Batch Photo Resizer.

1) Load Files

This will pop up the “Add Photos to List” File Dialog box. By default, it will open up in your Pictures folder. You can navigate to another location using the familiar Open File dialog box.

You can opt to select a single photo or multiple photos to be added into the CM Batch Photo Resizer.

CM Batch Photo Resizer currently supports JPEG, PNG and TIFF picture formats and all other file types would be grayed out.

Side Notes

To select a sequential list of photos, use your mouse and click on the first file name you want to include then hold down the “Shift” button while clicking on the last file name on the list.

To selectively include photos, use your mouse and click on the first file name you want to include then while hold down the “⌘ Command” (On the Mac) or “CTRL” button (On Windows), click on all the file names you want to include.

2) Load Folders

Use this option if you want to include an entire folder of photos to the list. All you need to do is to select the folder name and click on “Choose” and CM Batch Photo Resizer would include all the supported photos right into the application.

You will be prompted if you want to include photos from all the sub-folders into the application at this stage.

3) Clear List

Clicking this option will give you a clean slate to start with by removing all previously included photos on the list. This will allow you to work with another folder once you finished working with the previously selected ones.

This will also clear the last Preview Photo and the Status Window.

Notes on the Menu Bar

The menu bar duplicates all the buttons in the toolbar.

The Load Files, Load Folders and Clear List are found under “File”. The Start and Stop button under “Process” and Settings is found under “CM Batch Photo Resizer”.

Under “Help”, you find the option to bring up this Help File.

4) Start

This begins the Batch Resizing and Renaming Process. Once you are done setting up the list and configuring your preferences, click on this button then sit back and relax while CM Batch Photo Resizer does all the work for you. During processing, all the buttons are grayed out except for the Stop button.

5) Stop

If for some reasons, you need to stop the processing, click on this button. This will stop after it finishes processing the current photo so to ensure that you do not end up getting a damaged photo file. This option can be useful if you suddenly remember that this is not the folder you want to work with or that you might have forgotten to do some settings changes.

These do happen to mere mortals like us so do not be worried about it.

Photo File List

The Photo File List contains the photos which would be processed. Although you cannot work directly with the list, you can use the Load Files, Load Folders or just drag and drop a list of photo file names to this list and it would be added. To clear this list, click on the Clear List button on the toolbar.

When you drag a folder into the Photo File List, all the supported photo formats in that folder and all sub folders would be included in the list.

To preview a photo on the list, double click on the file name in the Photo File List and it will appear in the Photo Preview Screen. To Delete the file from the list, just bring up the contextual menu and select "Delete".

Saving Settings

1) Save In

This option determines where the processed photos would be saved in. Use the Choose Folder button to select a new folder to save the photos in. Alternatively, if you use the dropdown box, you could select the macro "[Source Folder]" which would save all images in their original folders.

2) Retain Folder Structure

This is used in conjunction with photos imported using the Load Folders or when a Folder is being drag-n-drop into the application. The processed photos would be saved in the same folder and sub-folder format as the originals under the folder location set in the Save In dropdown box.

Warning

If you set the Save In folder to [Source Folder] or is left blank without doing any form of filename renaming either by tagging Prefix and Suffix or doing the auto-number generation, your original photos would be automatically overwritten and cannot be recovered.

This would not work if photos are imported using the Load Files method.

Under OS X 10.7 Lion, The Save In settings would not be need to be selected each time you run CM Batch Photo Resizer due to the Sandboxing Requirement. This does not affect OS X 10.6 Snow Leopard or Windows users.

Photo Preview

Apart from showing you the photo on the list when you double click on the file name, you can check the "Show Processed Image After Processing" below this screen if you want the program to show you the processed photos after they are being worked on.

By default, this option is unchecked and the processed images are not shown to speed up the batch photo imaging process and to conserve memory.

Status Window

The Status Window will show you how many photo files are added and when photos are being processed (i.e. loaded, resized and saved).

Below the Status Window is the Progress Bar. This will show you the progress of the image processing.

Preferences - Settings Tab

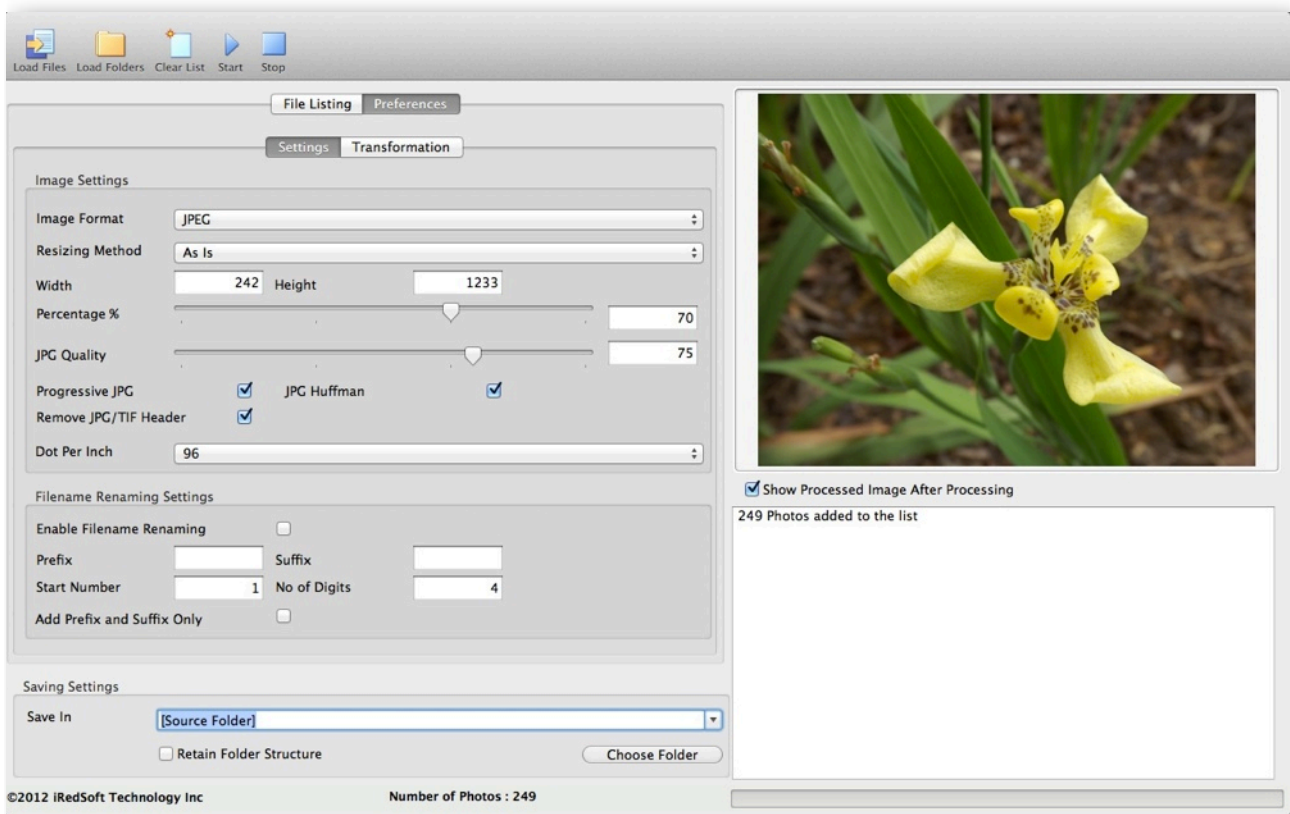


Figure 2 - Settings Tab

The Settings Tab is made up of five sections in two tabs - Image Settings, Filename Renaming Settings and Saving Settings under the Settings Tab and Effects and Text Caption under the Transformation Tab. The Settings would be saved and remembered each time you click the Close Window in Settings or the Start button in the toolbar.

Image Settings

This section sets up how you want to process the images.

1) Image Format

This determines the image format you want save the resultant photos in. There are four options listed - As Is, JPEG, PNG and TIFF. Setting this option as "As Is" would save the resultant photos in the same image format as the original files.

2) Resizing Method

This will determine how you want to resize the photos. CM Batch Photo Resizer offers you three methods to resize the images - Downsize by Pixel, Downsize by Percentage and 3/4x, 1/2x, 1/3x and 1/4x. The "As Is" option would cause the application to skip the resizing method.

a) Downsize by Pixel

The Downsize by Pixel method would work with the Width and Height to determine the dimensions of the resultant photos.

There are two ways of using the Width and Height dimension here. If you fill both the Width and Height properties, the ratio aspect of the photo is ignored and the photo will take on the Width and Height properties in Settings.

Alternatively, if you want to maintain aspect ratio, set either width or height and set the other dimension to 0. The dimension with a number above 0 will be used as the maximum pixel for that dimension and the one set to 0 will be resized accordingly to adjusted to maintain the original image aspect ratio.

b) Downsize by Percentage

The Downsize by Percentage method would work with the “Percentage %” properties. You can either slide the Slider Bar or type in the percentage you want to use on the box next to it. The application only accepts whole numbers between 10 and 100. Any numbers below 10 would be set to 10 and any number entered above 100 will be set to 100.

c) 3/4x, 1/2x, 1/3x and 1/4x

This will resize the images based on one of the preset ratio.

Notes

If you use Downsize by Percentage or one of the ratio option, the Ratio Aspect of the photo would be retained.

3) JPG Quality

This option would determine how much photo quality is maintained in the resultant photo. The downside is that the higher the quality, the larger the file size. This may not always be appropriate if you are attaching the photo in the email or putting them on the web as it would affect the download time. Setting it lower would result in a small file size which would make it more transportable.

The good news is that if you set the quality to between 70 to 80, you would not really see any noticeable differences and be able to enjoy a smaller file size. You will only see that some minor details are blurred when you attempt to view an enlarged version of the image.

4) Progressive JPG

This option may be useful if you intend to place large photos on the web. Under the normal circumstances, the web browser would fully load the photo before they show up on the web page. This may work well with small files or on a fast internet connection but would cause your audience to see a blank screen until the images are fully loaded.

When you check the Progressive JPG option, the images would be set to show up progressively as it is downloaded to your audience browser.

5) JPEG Huffman

Check this to allow the CM Batch Photo Resizer to optimize the Huffman Table in JPEG.

6) Remove JPG/TIF Header

JPEG/TIFF Headers which includes EXIF and XMP/IPTC would add up several tens kilobytes of the file size. If you do not require those headers and want to minimize the file size, check this option.

7) Dots Per Inch

Dots Per Inch allows you to change the Dots Per Inch settings for the images. Keeping the option set at As Is would retain the original image Dots Per Inch settings. In most modern image viewer, the DPI details is being ignored. The DPI is set in the JPEG header but not in the EXIF Settings.

Filename Renaming Settings

This settings will help determine how you want to save the filenames of the processed photos.

1) Enable Filename Renaming

By checking this option, the file renaming functions would be enabled. If this option is unchecked, the settings in the Filename Renaming Settings would be ignored.

2) Prefix and Suffix

These options allow you to tag text before (Prefix) and after (Suffix) either the original filename (When the Add Prefix and Suffix Only option is checked) or to the numerically generated filenames otherwise.

The Prefix and Suffix are fixed portion of the filename. If you do not need either Prefix or Suffix, just leave that option blank. Any spacing before the Prefix and after the Suffix would be removed.

For example, if your original filename is "P100234.JPG" and you set the Prefix option to "Zoo_" and Suffix to "_January 1st 2011" with the Add Prefix and Suffix Only option checked, your new filename would become "Zoo_P100234_January 1st 2011.JPG".

3) Start Number and No of Digits

When the Add Prefix and Suffix Only option is unchecked, CM Batch Photo Resizer would auto-generate running numbers for your new file names by ignoring the old ones when saving the photos.

The Start Number determines which number you want your first photo to be numbered and the No of Digits determines how much zero-padding is required.

If you set the No of Digits to 4 and your start number to 1 then your first filename would be labelled as "0001". With the same example but if you set the first number as "50000" then the first filename would be labelled as "50000".

The Auto-number generation would work with the Prefix and Suffix option too.

So with the example given in the Prefix and Suffix with the No of Digits set to 4 and Start Number to 1, your first file name would be labelled as "Zoo_0001_January 1st 2011.JPG".

4) Add Prefix and Suffix Only

This will cause only your predetermined prefix and suffix to be added to the resultant filenames thus preserving the original filenames without using the auto-generated numbers.

Colorspace Profile Support

Beginning from v1.0.6, CM Batch Photo Resizer supports Colorspace Profile for both the TIFF and JPEG image formats. Colorspace Profile would also be supported when converting from TIFF to JPEG or vice versa.

Preferences - Transformation Tab

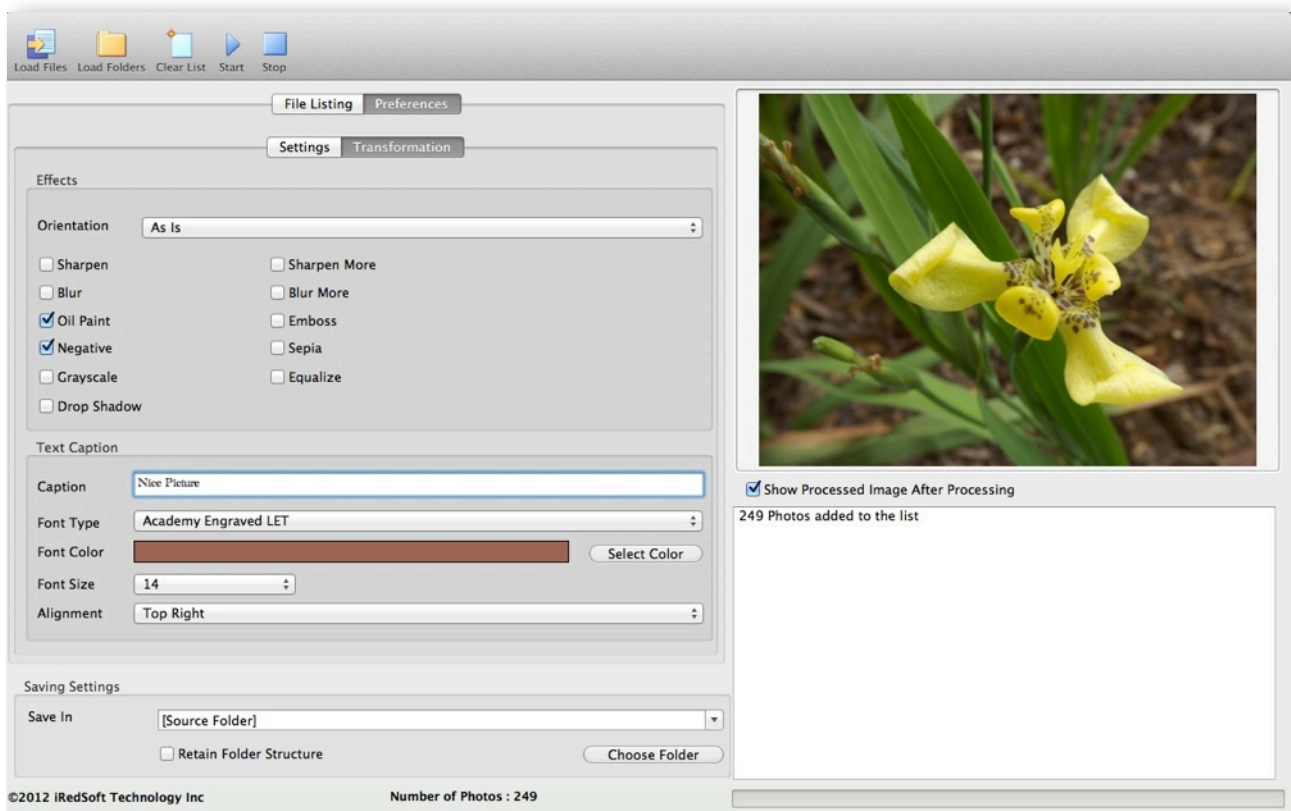


Figure 3 - Transformation Tab

Effects Settings

Effects allows you to add effects to the photos. The options are - Orientation, Sharpen, Sharpen More, Blur, Blur More, Oil Paint, Emboss, Grayscale, Negative, Sepia, Equalize and Drop Shadow.

1) Orientation

Orientation would allow you to help you rotate the photos. The options are - As Is, Rotate 90° Left, Rotate 90° Right, Rotate 180° and Flip Left.

Rotate 90° Left - This will rotate the photos 90° counterclockwise (anti-clockwise)

Rotate 90° Right - This will rotate the photos 90° clockwise

Rotate 180° - This will rotate the photo 180° clockwise

Flip Left - This will flip the photo from left to right

2) Sharpen

Reduces the Blurring effect on the photos and enhances the color

3) Sharpen More

As above but with more intensity

4) Blur

Soften the photos by blurring them

5) Blur More

Soften the photo with more intensity

6) Oil Paint

Create an Oil Paint effect on your photos

7) Emboss

Add a chiseled effect to the photos in grayscale

8) Grayscale

Create a Grayscale effect on the photos

9) Negative

Create Photo Negative Pictures by inverting the colors

10) Sepia

Create an Old Picture Effect

11) Equalize

Homogenize Brightness on the Picture

12) Drop Shadow

Add A Simple Drop Shadow Effect behind the Picture

Text Caption Settings

Beginning with v1.0.7, CM Batch Photo Resizer supports a simple single line text caption support.

1) Text Caption

This is the text which would be overlaid on the pictures. The Text Caption would be formatted with the font type being selected to give you a simple preview of the text style to be used.

2) Font Type

The Font Type Determines the Font and its Attributes to be used.

3) Font Color

Font Color can be selected by using the Select Color button and selecting a color from the Color Dialog.

4) Font Size

Font Size determines the size of the text being used.

5) Alignment

CM Batch Photo Resizer offers 9 preset Text Alignment which can be used. This include Top Left, Top Middle, Top Right, Center Left, Center Middle and Center Right, Bottom Left, Bottom Middle and Bottom Right.

Notes

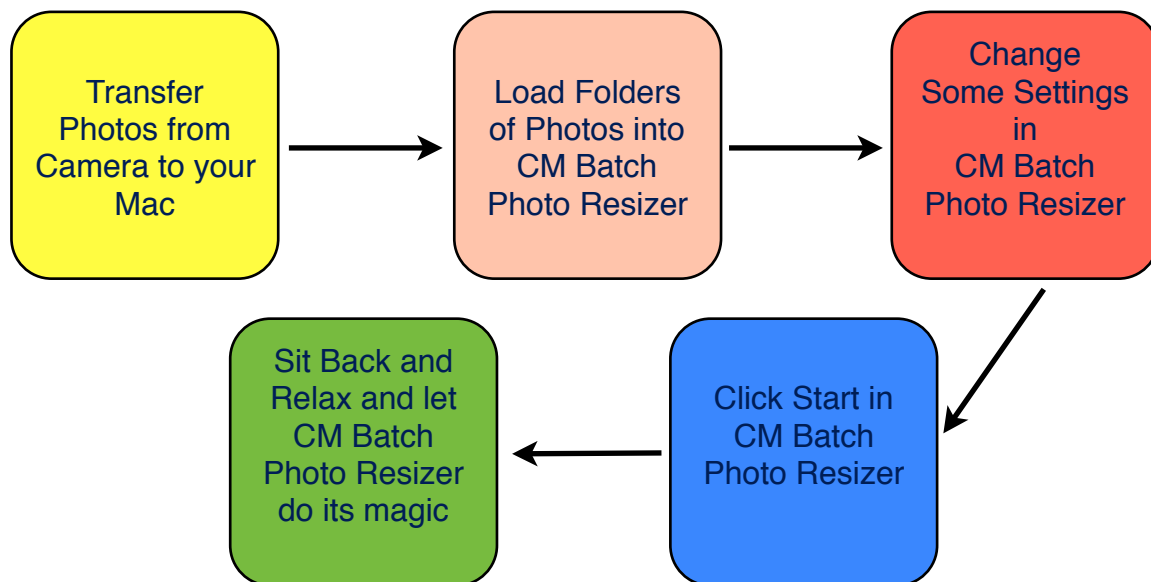
CM Batch Photo Resizer does not support Multi-line Text Caption at the moment. Text would not be properly aligned when the text overruns to the subsequent line. To keep the text within a single line, you could vary the font size and font type.

How To

CM Batch Photo Resizer is built to be easy to use as we try very much to keep the complexity to the minimum. As a user, you should relax and let CM Batch Photo Resizer do all the tedious and mundane for you.

Photo Renaming and Resizing may be simple work but if you are like me, after a photo trip, you could take hundreds of photos and resizing and renaming them one by one can be very tiresome. It would make photo taking an unpleasant experience. If you just keep the photos as they are, you may find that you would not be able to recognize the photos after several months as they come with cryptic filenames and with the new double digit megapixels cameras, you may find yourself running out of disk space sooner. That is where CM Batch Photo Resizer shines.

A typical day with CM Batch Photo Resizer would look like this



Step by Step

- 1) Use either the Load Folders or Load Files to add the photos you want to work on CM Batch Photo Resizer.
- 2) If you need to make adjustments to how the images are to be processed, go to the Settings Page. The most important setting is the “Save In” settings which determines where you want the photos to be saved in. If you kept it blank, it will overwrite the original images.
- 3) Once you are happy with the settings, click “Start” and let CM Batch Photo Resizer do its work.
- 4) Take a nap, a walk, a cold beer or anything else you need to do.

Things to Note

- Although it is possible to load photos directly from the camera (if it shows up as a Drive), it is not recommended as if the battery runs out of juice, you may get damaged files.
- Ensure that all photos comes with filename extensions such as .jpg, .jpeg, .tif, .tiff or .png. They can come in either upper- or lower-case.
- Ensure that you back up your original photo files because we know they are very precious to you. Although we hope that the photos would remain intact but anything could happen during image processing. We are not perfect but we strive to be. If the files are overwritten, they cannot be undone.
- Do set the Save In Folder to something other than the original photo file location unless you are doubly sure that that is what you want to do. Setting the Renaming option in CM Batch Photo Resizer will ensure that the original photo files would not be overwritten.
- If there is anything you do not know about CM Batch Photo Resizer, found some problems or just like to see some new features included, please feel free to email us at support@completemagic.com or support@batchimage.com
- Most importantly, remember to take the time do relax or do something productive or do something you enjoy doing instead of renaming and resizing photos one at a time.
- If you like using CM Batch Photo Resizer and find it enrich your life or can be a benefit to someone else, do drop us a note or tell your friends about it. The profit raised from the sale of this application would help fund further enhancement to it.
- If you purchase CM Batch Photo Resizer from the Mac App Store, you would need to update from there. Otherwise if you purchase CM Batch Photo Resizer on our website, you can update from our website at <http://www.batchimage.com>

Revision History

v1.0.0 (02/03/2011)

- Initial Mac OS X Release

v1.0.1 (02/10/2011)

- Initial Windows Release
- Bug Fix : EXIF Header not saved
- Replace Charcoal Effect with Sepia
- Add : Equalize Effect
- Code Optimization and internal fixes
- Replace GraphicsMagick Core with In-House Imaging Engine

v1.0.2 (03/08/2011)

- Bug Fix to the Ratio Aspect Computation when resizing photos.

v1.0.3 (04/20/2011)

- Support Recursive Folder Import using Add Folder and Drag and Drop Files/Folders
- Add : Retain Folder Structure Properties which allows saving of the files in the same folder structures when used with Add Folder or Drag and Drop method.
- Fix : Maximize Windows causes the windows to shrink to default dimensions.
- Retain Font Size for settings no matter how images are resized.

v1.0.4 (05/27/2011)

- Cocoa Build for Mac OS X

v1.0.5 (06/03/2011)

- Fix : Sepia Effect which causes images to turn purple.

v1.0.6 (07/02/2011)

- Added Dots Per Inch Settings Option for JPEG and TIFF Images
- Added Colorspace Profile support for JPEG and TIFF images

v1.0.7 (07/30/2011)

- Added Full Screen Support for OS X Lion
- Added Single Line Text Caption with Alignment Support
- Added Picture Drop Shadow Effect
- Modify Preferences Page with Tab to support new parameters

v1.0.8 (08/15/2011)

- Removed Progresswheel which causes crash in some OS X 10.6.8 systems

v1.0.9 (09/06/2011)

- Improved Error Checking for Faulty Photos. CM Batch Photo Resizer will now skip over faulty photos or one which is not supported.
- Sandbox App for OS X 10.7 Lion App Store Compliance
- Due to the Sandboxing Requirement, the Save In Directory is no longer saved for OS X Lion users.
- Move Saving Settings to Main Page for Ease of Usage

v1.0.10 (09/23/2011)

- Bug Fix : Help File could not launch in Preview due to a Permission Issue. Now Help File are launched from our website.
- Added in the File Listing's Contextual Menu, the option to Delete File from the listing.

v1.0.11 (10/25/2011)

- Added Support for XMP/IPTC Header Retention when transferring between JPEG to JPEG or TIFF or vice versa
- Added Option to Remove All Headers - EXIF and XMP/IPTC to reduce file size
- Added Huffman Optimization for JPEG Photos

v1.1.12 (01/16/2012)

- Code Optimization
- Updated Imaging Engine

v1.1.13 (02/07/2012)

- Updated Imaging Engine
- Move Preferences from a Pop up Window to a Tab

Existing issues

- Under Windows XP, Windows Explorer does not show the new thumbnails. The workaround is to right-mouse click the thumbnails and select Refresh Thumbnail.