



Introduction

5

Version History

7

Table of Contents

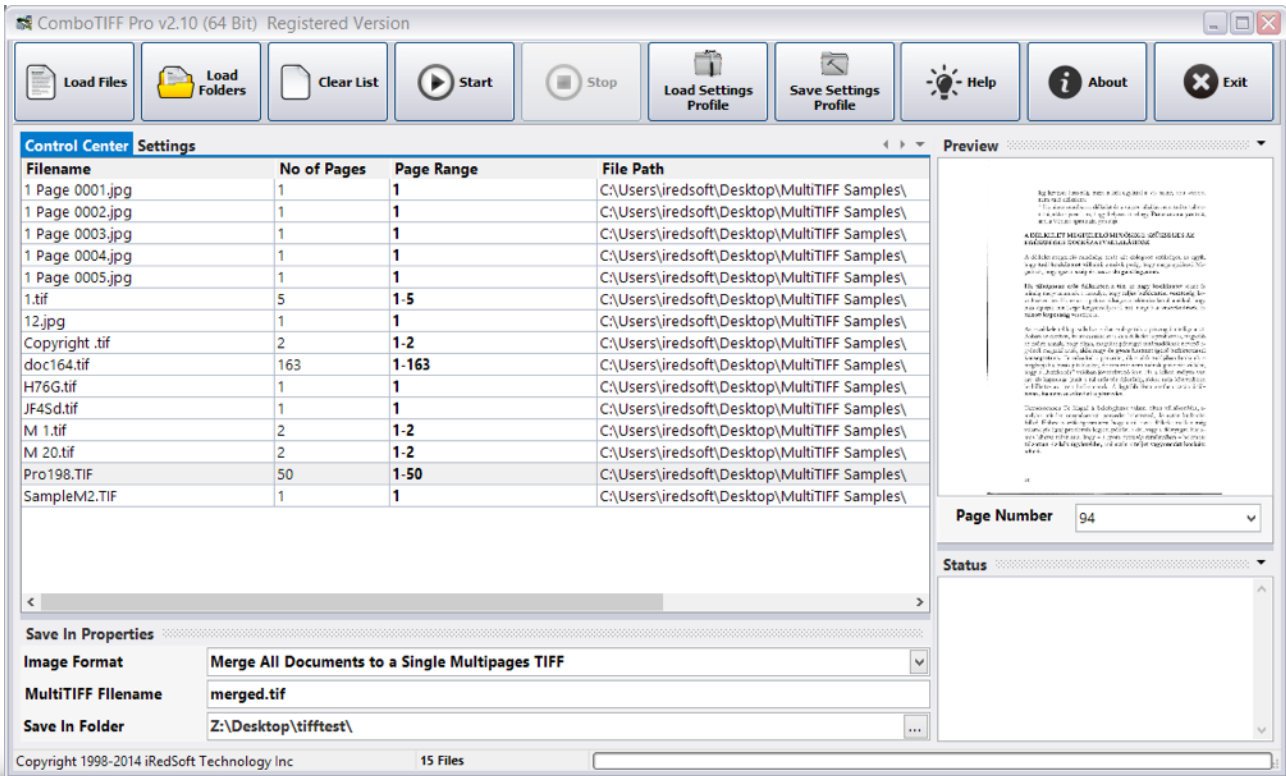
Licensing and Purchase Information	8
Contact Information	9
Application Overview	10
Button Controls	11
<i>Load Files</i>	<i>11</i>
<i>Load Folders</i>	<i>11</i>
<i>Clear List</i>	<i>11</i>
<i>Start</i>	<i>11</i>
<i>Stop</i>	<i>11</i>
<i>Load Settings Profile</i>	<i>11</i>
<i>Save Settings Profile</i>	<i>11</i>
<i>About</i>	<i>11</i>
<i>Help</i>	<i>11</i>
<i>Exit</i>	<i>12</i>
Control Center	13
<i>Drag and Drop Files into the File Listing</i>	<i>13</i>
<i>Reordering the Files within the File Listing</i>	<i>13</i>
<i>Previewing the Content of a File</i>	<i>13</i>
<i>Deleting a File from the List</i>	<i>14</i>
<i>Editing Page Range</i>	<i>14</i>
<i>The Golden Rules for Page Ranges</i>	<i>14</i>
Preview Window	14
Settings	15

Image Settings	15
<i>TIFF Compression</i>	15
<i>TIFF Colorspace</i>	15
<i>Resizing Method</i>	15
<i>Resampling Method</i>	16
<i>Width</i>	16
<i>Height</i>	16
<i>Keep Ratio Aspect</i>	16
<i>Percentage (%)</i>	16
<i>JPEG Quality (%)</i>	16
<i>Progressive JPEG</i>	16
<i>Keep IPTC Header</i>	16
<i>Dots Per Inch</i>	16
<i>Image Orientation</i>	17
<i>Sharpen</i>	17
<i>Color Depth</i>	17
<i>Gray Scale</i>	17
Text Captioning	17
<i>Text Caption</i>	17
<i>Font Type</i>	17
<i>Bold</i>	18
<i>Italic</i>	18
<i>Font Color</i>	18
<i>Font Size</i>	18
<i>Trim Spacing from Text</i>	18
<i>Text Alignment</i>	18
<i>Caption At</i>	18
<i>Alignment X Padding</i>	18

<i>Alignment Y Padding</i>	18
<i>Drop Shadow</i>	18
File Properties	19
<i>Single Page File Name Format</i>	19
<i>Zero Padding</i>	19
<i>Copyright Tag</i>	19
Save In Properties	19
<i>Image Format</i>	19
<i>MultiTIFF Filename</i>	20
<i>Save In Folder</i>	20
How To	21
Merging Several TIFF/Image Files Together	21
Changing Page Order in a Multipage TIFF File	21
<i>Reverse Sort Order</i>	21
<i>Changing the Order of Several Pages</i>	21
<i>Removing Pages</i>	21
<i>Duplicating Pages</i>	21
Inserting Documents or Images with a Document	21
Splitting the Multipage TIFF into individual pages	22

Introduction

ComboTIFF Pro is a revamped and updated version of Batch TIFF Resizer Lite which merges the core features of Batch TIFF Resizer Lite, CM ComboTIFF and included several new enhancements.



Despite the name, Batch TIFF Resizer Lite is not a feature-limited application, it can pretty much do everything that Batch TIFF Resizer does, which includes batch resizing of single and multi-page TIFF files, add text captions, merge TIFF, PNG and JPEG files together and export them as multi-page TIFF, single-page TIFF, JPEG and PNG files. The core difference between Batch TIFF Resizer and Batch TIFF Resizer Lite was the PDF export features which the “Lite” does not have.

CM ComboTIFF on the other hand was our attempt to develop a cross-platform based application which works on both Windows and Mac. It basically duplicates several features which Batch TIFF Resizer Lite does and we thought it best to merge the two branches together to prevent any confusion. ComboTIFF Pro was a more appropriate name given what the application can do. We have a basic version called ComboTIFF for Windows which does what CM ComboTIFF does.

In mid 2012, we decided to revamp the entire cross-platform ranges of applications, to modernize them and improve on performance. This is an on-going process. Part of what we wanted to bring to the table is a modern touch-friendly interface and native 64 Bit Support.

ComboTIFF Pro comes in both native 32 Bit and native 64 Bit versions which on the surface works exactly the same. Under the hood is a totally different matter altogether. The 64 Bit version works on any 64 Bit Windows beginning from Windows Vista up to the new Windows 8 and takes advantage of the larger memory addressing and works much faster than ever before. In Windows 8, it would take advantage of the new Windows 8 Modern User Interface.

ComboTIFF Pro allows you to

- work with Multipage TIFF, Single page TIFF, PNG and JPEG images
- extract a page or range of pages from the Multipage TIFF documents
- organize pages from within a Multipage TIFF document using page ranges (ascending or descending) or single pages
- merge several TIFF, PNG and JPEG images together into a single Multipage TIFF
- save all extracted pages into a single Multipage TIFF file
- save each documents as individual Multipage TIFF files
- save all extracted pages into multiple Single page TIFF, PNG and JPEG Files
- change TIFF Compression to None, CCITT G3, CCITT G4, JPEG v7.0, Packbits or LZW
- change TIFF Colorspace to CMYK, YcbCR, RGB, RGB Palette or CIELab
- resize the dimension of each page by Pixel Dimension, Percentage or to 3/4x, 1/2x, 1/3x and 1/4x the original dimension while retaining ratio aspect
- rotate pages 90° clockwise, 90° counterclockwise, 180° or flip left or flip down
- apply sharpening effect to the pages
- change color depth to 1 Bit, 4 Bits, 8 Bits or 24 Bits
- support Grayscale images including Grayscale JPEG output
- add Text Captions to all or selected pages in the document
- add copyright tag to the files as and where the tag is supported

Version History

v2.0	- New Major Version Release
v2.01	- Fixed Bug which causes Load Profiles not to Update Settings
v2.02	- Revert to Gray Theme - Update Imaging Engine - Fixed Bug which causes some checkboxes not to be saved
v2.10	- Updated Imaging Engine - Update Interface - Added Double-Click to Preview Image
v2.11	- Update Imaging Engine
v2.12	- Improved Windows 10 Support - Improved Memory Management
v2.15	- New Code Sign Certificate
v2.16	- Improved Support for the Toolbar Icon Images
v2.17	- Improved Support for Load Folders method - Improved Checking to prevent faulty images from loading and crashing the application
v2.18	- Fixed Memory Leak in the File Dialog

Licensing and Purchase Information

ComboTIFF Pro is a licensed commercial application and as such you would be required to purchase a license to use the application in any manner other than evaluation.

We understand that applications may have descriptions which may sound exactly what you need and more but upon purchasing, you find that they do not meet your requirements. As such, we do provide a free 14 Days unrestricted trial version of both the 32 Bit and 64 Bit application so that there is no surprises. During that time, you would be able to test drive the application whether it satisfy your needs. You can download this trial version from our website at <http://www.batchimage.com/downloads> .

If you intend to use the application beyond that 14 Days, you would be required to purchase a license. Currently, each license has a standard retail price of US\$35.95 which can be purchased through our website at <http://www.batchimage.com/registration> .

Each purchased license will unlock both the 32 Bit and 64 Bit version of this application so you can decide to switch between versions as and when needed.

Our licensing model is simple, each license for each user which you may install on up to 3 computers (provided you are the exclusive user). If the application is used by more than 1 person, you would need to purchase additional license for each of the additional users.

You will also be entitled to all free minor updates and bug fixes within v2.x . For updates, you can download and install a new copy from our website at <http://www.batchimage.com/downloads> . Your existing key would activate that new update.

Any major upgrade between v2.x and v3 or later would not be free but as a valued customer, you would be offered a deep discount if you want to take advantage of the upgrade.

Once a new major upgrade is available, all updates and bug fixes for the prior versions would stop. You may however continue to use that license if you so require.

We do not believe in the subscription model which requires you to pay annually for the license whether there is updates or not. What we want is to be able to build applications which would improve your workflow and brings you results time and time again. As such, if you feel that there is a missing features or bugs you encountered, please write to us at support@batchimage.com and we will do our best to address them.

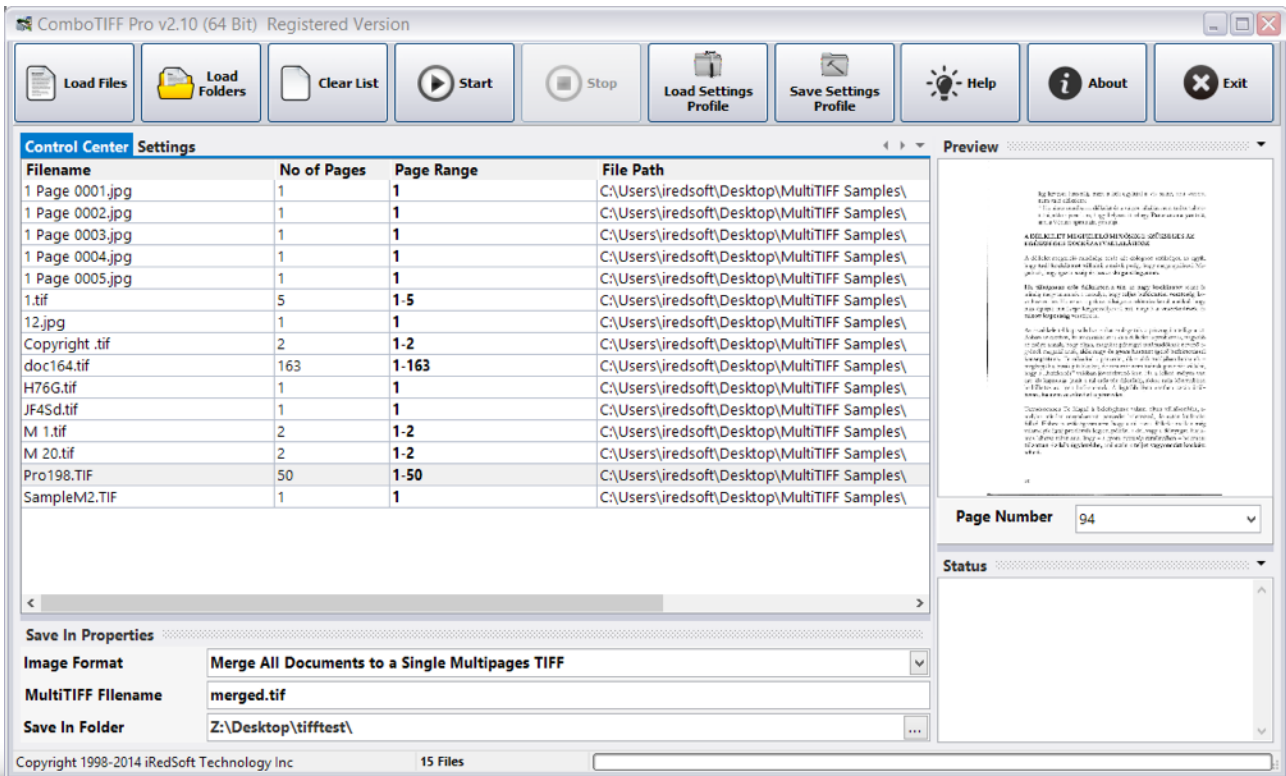
Contact Information

If you encounter any bugs in the application, have a feature you like to see in the application or are unsure of how to use certain features in the application, feel free to contact us at support@batchimage.com . You might want to check if there is any updates to the application at <http://www.batchimage.com/downloads> which may have fixed the issue.

If you have any sales inquiry or may have lost your registration key, please contact us at sales@batchimage.com . For lost of registration details, please provide us the name of the application, your name and your address so that we can verify your order status.

When you contact us, please provide us with the name and version of the application you are using as that would allow us to assist you better.

Application Overview



When you start the application, you will be greeted with a screen similar to the one above, minus the file listing. The theme of the interface shown may vary. This interface forms the core of the application.

What you have on the very top is the enlarged button controls which is touch-friendly and contains all the features of a typical Main Menu and functions which you need to perform the necessary processing.

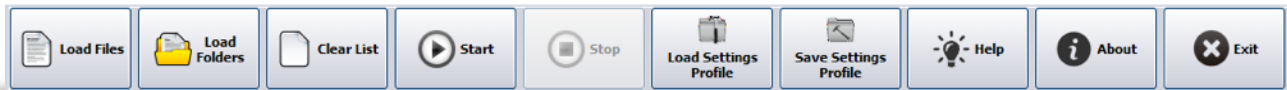
Below that is two tabs, Control Center and Settings. The Control Center contains the file listing of the files which would be processed and allows you to reorder, change page ranges, view and delete from the list. You could even drag and drop a list of files to the file listing. The Settings tab is where most of the settings which you can apply resides in. More on the Settings tab later.

On its left, you have the Preview window which would allow you to preview the image file or tiff pages. There is a Page Number dropdown which allow you to switch between the tiff pages. This is a quick rendering of the pages so as to give you a quick view of the pages and may vary in quality from the actual rendered pages.

Below the preview window is the Status Window. This basically shows the status of what is done to the images or pages when the processing starts.

Below the Control Center/Settings tabs is the Save In Properties, this give you a quick access on some settings which you would need while saving the documents or images.

Button Controls



The buttons on the button controls would gray out or gets enabled depending on several conditions.

Load Files

This allows you to load one or more files from a file directory into the file listing.

Load Folders

This would allow you to load all supported files types (TIFF, JPEG and PNG) in a folder and its sub folders (if required) into the file listing. Once you select a folder, you will be prompted with a message asking if you want to include the sub folders too. The loading to the file listing may take a while depending on the number of images and depth of the sub folders as each TIFF file needs to be opened to determine the number of pages it contains.

Clear List

This will clear the file listing, the preview image and status window.

Start

This begins the batch processing of the files. At this stage, all buttons would be gray out apart from Stop, About and Help. You will be able to see the status of the processing in the Status Window.

Stop

This will stop the batch processing and would stop prior to the next file to be processed.

Load Settings Profile

ComboTIFF Pro allows you to save all the settings used into a XML file which you can reused in the future. Load Settings Profile allows you to do that. This XML File is text-readable and contains all the settings used in the application.

Save Settings Profile

This would save all the settings used in this application (minus the file listing) into a XML file. This can be reloaded as and when required.

About

This will bring up the About Window

Help

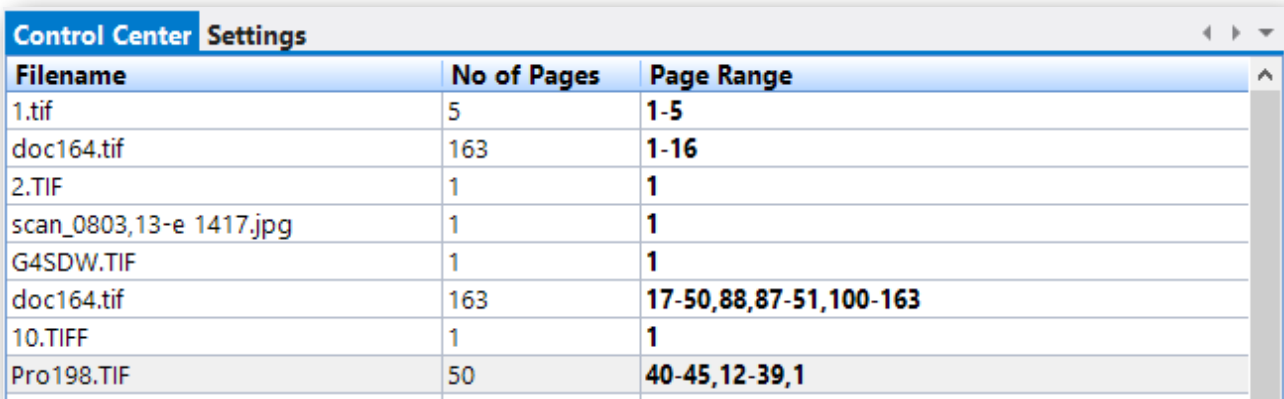
This will bring up this PDF based Manual

ComboTIFF Pro (F.K.A. Batch TIFF Resizer Lite)

Exit

This will allow you to terminate the application

Control Center



Filename	No of Pages	Page Range
1.tif	5	1-5
doc164.tif	163	1-16
2.TIF	1	1
scan_0803,13-e 1417.jpg	1	1
G4SDW.TIF	1	1
doc164.tif	163	17-50,88,87-51,100-163
10.TIFF	1	1
Pro198.TIF	50	40-45,12-39,1

The Control Center, particularly the File Listing is where you would probably do most of your work in and as such we would begin with describing what you can do with it.

Drag and Drop Files into the File Listing

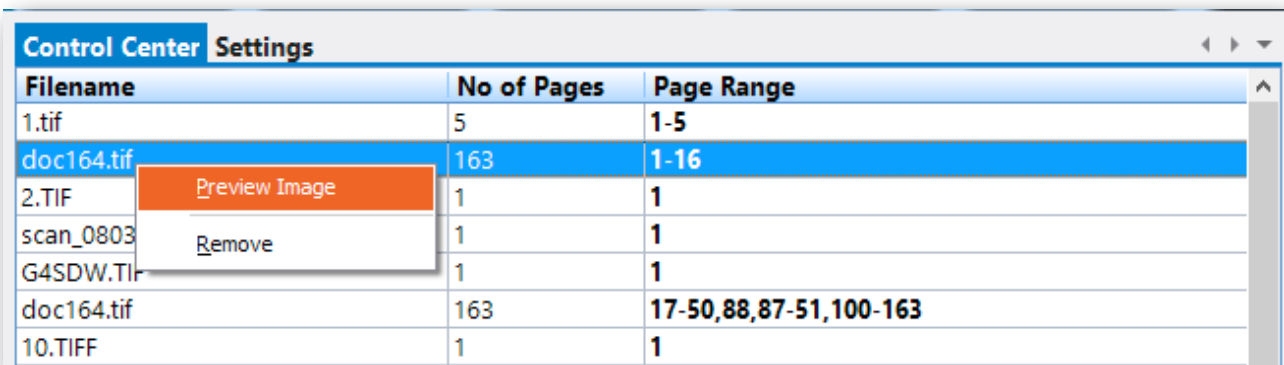
Apart from using the Load Files and Load Folders buttons to import files to the File Listing, you can drag and drop them from your Windows Explorer. All you would need to do is to drag the filenames to the File Listing and release the mouse button. All supported images and document types would be added to the list.

Reordering the Files within the File Listing

Select the Filename on the list and while holding down the left mouse button, drag the file to the location you want it to be inserted to. A red line would appear when you drag the filename to a different location, this is where it would be inserted to when you release the mouse button.

Previewing the Content of a File

Begin by selecting a filename and bring up the contextual Window by doing a Right-mouse click on the filename and select "Preview Image".



Filename	No of Pages	Page Range
1.tif	5	1-5
doc164.tif	163	1-16
2.TIF	1	1
scan_0803	1	1
G4SDW.TIF	1	1
doc164.tif	163	17-50,88,87-51,100-163
10.TIFF	1	1

The first page of the document or image would appear in the Preview Panel. You can change the page number using the drop box in the Preview Panel.

Deleting a File from the List

Begin by selecting the file you want to delete by clicking on the Filename and bring up the contextual window and select "Remove". This will remove the file from the list but the original file would be intact.

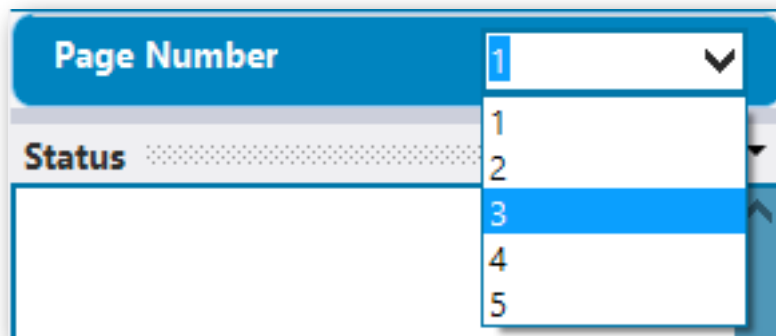
Editing Page Range

The only editable column in the File Listing is the Page Range. This is where you would change the page range. When you load the files to the file listing, all Multipage TIFF would have a default page range which begins from the first to last page, for example 1-10. Once you exit from the Page Range box, the set range would be validated and any errors be fixed by the application automatically. This would ensure that all page range falls within the actual number of pages of the documents.

The Golden Rules for Page Ranges

- All Page Range must include "-" to denote "to" in the range, for example 1-10
- Use "," as a separator for different pages or ranges, for example 1,3-10,2,15-18
- For Descending Order Page Ranges, you would need to begin the range with the larger page number, followed by a "-" and then a smaller page number, for example 99-50
- You may duplicate the same page number over again in the list, for example 1,3-10,1,4-9
- All Pages under 1 would be set back to 1
- All Pages above the "No of Pages" would be set to the last page of the document

Preview Window



The Preview Window would show a thumbnail of the image or selected page of the document. At the offset, the first page would be shown. You can navigate between the pages using the Page Number drop box which would be populated with all the pages in the document. A single page TIF or image file which has a single page would have the Page Number disabled.

When you begin the batch processing, the Preview Window will show a preview of the page after it is being worked on and the Page Number would show the current page number. At this stage, the Page Number cannot be changed.

Settings

There are three parts to the Settings Tab and we will explore one at a time

Image Settings

<input type="checkbox"/> Image Settings	
<input type="checkbox"/> TIFF Compression	LZW
TIFF Colorspace	CMYK
<input type="checkbox"/> Resizing Method	1/2x
Resampling Method	Lanczos3
Width	400
Height	500
Keep Ratio Aspect	<input checked="" type="checkbox"/>
Percentage (%)	67
JPEG Quality (%)	75
Progressive JPEG	<input type="checkbox"/>
Keep IPTC Header	<input checked="" type="checkbox"/>
Dots Per Inch	72
Image Orientation	Flip Down
Sharpen	As Is
Color Depth	8 Bits
Gray Scale	<input type="checkbox"/>

The Image Settings would basically deal with the technical settings relating to the image processing.

TIFF Compression

The application supports None (Uncompressed), CCITT G3, CCITT G4, JPEG (v7.0), Packbits and LZW compressions. Each compression method utilizes a different method of saving the TIFF file and may result in a varied file size and color bit. When using the JPEG compression, the JPEG Quality (%) settings would be used to determine the quality of each page.

TIFF Colorspace

The supported Colorspace includes As Is (use the existing colorspace), CMYK, YcbCR, RGB, RGB Palette and CIELab.

Resizing Method

If you do not require any resizing, set this to “As Is”. ComboTIFF Pro supports different method to resizing your documents which includes “Downsize by Pixels”, “Downsize by Percentage”, “3/4x”, “1/2x”, “1/3x” and “1/4x”.

When you use Downsize by Pixels, the Width, Height and Keep Ratio Aspect options would be relevant. If the image dimension is shorter than the set Width and Height, no resizing would be applied.

Downsize by Percentage will make use of the Percentage (%) option.

Resampling Method

The Resampling Method determines how each page would be resized. The Lanczos3 would be the slowest method but offers the best reproduction of the original images and None would be the fastest.

Width

This determines the maximum width in pixels of the pages when the Resizing Method is set to “Downsize by Pixels”. If Width is set to 0, the image or page width would be used.

Height

This determines the maximum height in pixels of the pages when the Resizing Method is set to “Downsize by Pixels”. If Height is set to 0, the image or page height would be used.

Keep Ratio Aspect

If this option is unchecked and the Resizing Method is set to “Downsize by Pixels”, the pages would use the Width and Height settings to resize the page.

When this is checked, the original page Ratio Aspect would be applied to the resized page.

Percentage (%)

When the Resizing Method is set to “Downsize by Percentage”, this setting would calculate the dimensions of the resized page relative to the original page dimensions. With Percentage, the Aspect Ratio would always be respected. When the Percentage is set to 100%, no resizing is being applied.

JPEG Quality (%)

The JPEG Format allows you to vary the image quality to reduce file size. However, the lower the image quality, the higher the jagged edges or jpeg artifacts can be seen. Typically, setting it at between 75% and 85% would yield the best image quality and file size ratio. This would be used when the Image Format is set to “Extract to Multiple Single Page JPEG” or to a TIFF format when the TIFF Compression is set to “JPEG”.

Progressive JPEG

Typically when the JPEG File is deployed to a web server and viewed over a web browser, the image would be downloaded by the web browser completely before being shown. For large JPEG files, this may not be acceptable especially on slow internet connections. However, when the Progressive JPEG option is checked, the image would show up on the web browser progressively as it gets loaded. There would not be any distinct difference if the image is viewed locally or on a fast internet connection over the web.

Keep IPTC Header

IPTC Header are typically used by the Press to embed headlines and text in the images. Enabling this option would retain the header.

Dots Per Inch

This determines the Dots Per Inch setting which would be tagged to the image header. Typically, this option is no longer being used by most consumer grade applications but

may still be used by commercial or professional grade applications to determine actual dimensions.

Image Orientation

ComboTIFF Pro allows you to rotate all the images in your list. The options provided are Rotate Clockwise 90°, Rotate CounterClockwise 90°, Rotate 180°, Flip Left and Flip Down. Setting it to “As Is” would retain the existing orientation.

Sharpen

This allows you to apply sharpening effects to the images. The available options are “Sharpen” and “Sharpen More”. Sharpen More would apply double the sharpening intensity.

Color Depth

The Color Depth option allows you to set the color palette to be used in the images. The available options are “1 Bit”, “4 Bits”, “8 Bits” and “24 Bits”. The 1 Bit option would yield a true Black and White image, 4 Bits would yield a palette of 16 colors (grayscale), 8 Bits would yield a palette of 256 colors and 24 Bits would yield the full color palette.

Gray Scale

This will automatically set the images to Grayscale by applying a 4 Bit Color Depth. If the output file is JPEG, the images would be saved as a Grayscale JPEG instead of the Full Color JPEG file.

Text Captioning

This option allows you to add a static or dynamic text to the image. A Dynamic Text is one which contains a predefined macro. A macro is identified with a “[“ and “]” brackets.

The Macros which are available are

- **[Filename]** - The New filename (inclusive of the file extension) of this image or document file without the file path.
- **[FilenameNoExt]** - The New filename without any file extension and file path.
- **[OrgFilename]** - The Original Filename without the file path.
- **[OrgFilenameNoExt]** - The Original filename without the file extension and file path.
- **[TotalPages]** - The Total Pages in the newly generated file
- **[PageNo]** - The current page number of the image or document
- **[OrgTotalPages]** - The Original File Total Pages
- **[OrgPageNo]** - The Original File Page Number

The Macros can be used in combination with other macros or with static text, for example [PageNo] of [TotalPages].

Text Caption

The Text Caption which would be used in the images or document.

Font Type

This would be the font type which would be used to cast the Text Caption.

Bold

This will bold the text caption.

Italic

This will add the Italic effect to the text caption.

Font Color

This would be the color of the text caption. The Font Color uses a web friendly palette.

Font Size

This determine the font size being used. The text caption would be added after the images or pages have been resized. Although we provided a dropbox with several Font Size options, you are free to type in any font size which you want to use.

Trim Spacing from Text

Sometimes, we may inevitably enter spacing before or after the text caption which we may not want and checking this option will remove those spacing. However, if you want those spacing, you can uncheck this option.

Text Alignment

ComboTIFF Pro offers you 13 predefined alignments which you can place your text and this includes “Top Left”, “Top Middle”, “Top Right”, “Center Left”, “Center Middle”, “Center Right”, “Bottom Left”, “Bottom Middle”, “Bottom Right”, “Vertical Left BottomUp”, “Vertical Left TopDown”, “Vertical Right BottomUp” and “Vertical Right TopDown”. It also offers two random options which includes “Random” and “Random Corners”. The “Random” options would add the text caption to any of the 13 predefined alignments and “Random Corners” would only tag it to the four corners options. Setting this to “None” will disable the Text Caption option.

Caption At

This option allows you to define on which page or pages you want the text caption to appear in. The options are “First Page”, “Last Page”, “Even Pages”, “Odd Pages”, “Odd Pages Except First Page” and “All Pages”.

Alignment X Padding

Alignment Y Padding

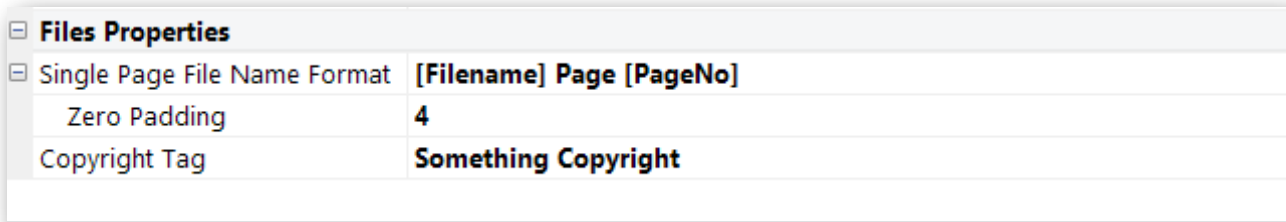
Although the Text Alignment option will perform the necessary computation to determine the best X and Y axis to add the text caption, it may not always be what you need. The Alignment X Padding and Alignment Y Padding would allow you to fine tune the location in which the text caption would be added to. These options are in pixels. A negative X would notch the text caption to the left and a positive pixel will notch it to the right. A negative Y would notch it to the top and the positive to the bottom. The application does not check on the padding settings and if the defined alignment and padding exceeds that of the image or page dimension, it may not appear in the image or page.

Drop Shadow

This will add a drop shadow effect around the text caption.

File Properties

This options relates to the generated file properties. Some of the most commonly used features are found in the Save In Properties.



<input type="checkbox"/> Files Properties	
<input type="checkbox"/> Single Page File Name Format	[Filename] Page [PageNo]
Zero Padding	4
Copyright Tag	Something Copyright

Single Page File Name Format

As with the Text Caption, there are three macros which can be used in designing the filename. This option would automatically be used if the original file contains more than a single page and when one of the “Extract to Multiple Single Page” option is selected in “Image Format”.

The Macros are **[Filename]**, **[PageNo]** and **[TotalPages]**. The Filename here refers to the new filename.

Zero Padding

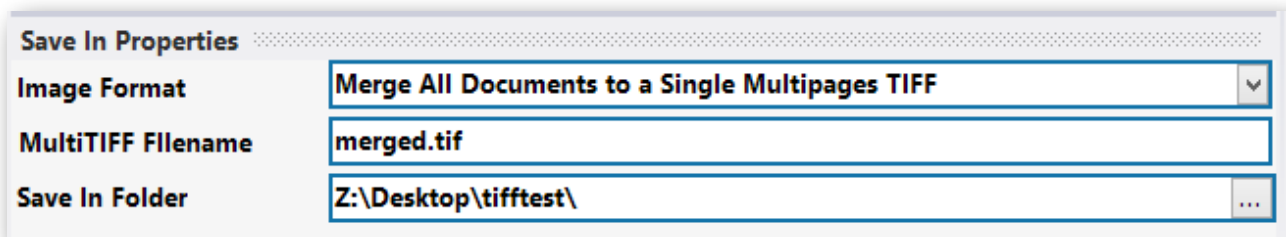
This determines the minimum number of digits a number (PageNo or TotalPages) would have. If you set it to 4 then all numbers would be padded to 4 digits. For example, Page 4 would be listed as Page 0004. Setting it to 0 or a number lower than the number of digits would disable the zero padding feature. Zero Padding is useful in allowing you to sort the filenames in Windows Explorer or a Spreadsheet and makes it easier to view.

Copyright Tag

This will tag this text in the header of the document/image file as and where the format supports. This tag can be viewed only by looking at the Info Details of the document or image file.

Save In Properties

The Save In Properties are settings which we feel are more frequently used and by putting it at the bottom of the page, would allow you to change them as and when needed without having to flip to the Settings tab.



Save In Properties	
Image Format	Merge All Documents to a Single Multipages TIFF
MultiTIFF Filename	merged.tif
Save In Folder	Z:\Desktop\tiffstest\

Image Format

This determines how you want to save the images or documents. There are 5 options available here.

- **Merge All Documents to a Single Multipages TIFF** - This would simply merge all the extracted pages or images and merge them into a single Multipages TIFF. This will save the resultant TIFF file using the MultiTIFF Filename option.
- **Extract One File to One Multipages TIFF** - This will treat each file as a separate entity and each file's extracted pages would be saved as an individual Multipages TIFF. If the full range is selected or if it is a single page document or image, the original filename would be used and saved as a TIFF file. If a page range is selected, the filename would include the original filename tagged with the Page Ranges used, for example Document Pages 0012-0050.tif .
- **Extract to Multiple Single Page TIFF** - This will save all the extracted pages as single page TIFF files using the Single Page Filename Format.
- **Extract to Multiple Single Page JPEG** - This will save all the extracted pages as JPEG files using the Single Page Filename Format.
- **Extract to Multiple Single page PNG** - This will save all the extracted pages as PNG files using the Single Page Filename Format.

MultiTIFF Filename

This filename is used when the Image Format is set to “Merge All Documents to a Single Multipages TIFF”.

Save In Folder

This is the location in which all the generated files would be saved in. Use the “...” to select a folder. This will ensure that the folder exist and that the correct folder format is being used.

How To

Merging Several TIFF/Image Files Together

The most common usage of ComboTIFF Pro would be to merge several TIFF files or to create a multipage TIFF file using several image files. What you would need to do is to load the list of files into the file listing. If you need to sort the filenames, you can click on the Filename header to sort Ascending or Descending order. To fine tune the sort, you can manually drag and drop the filename to the rightful place.

Once that is done, set the Image Format to “Merge All Documents to a Single Multipages TIFF”, set the MultiTIFF Filename and the Save In Folder. Once all that is set, click “Start” and your merged file would be worked on.

Changing Page Order in a Multipage TIFF File

Now with the Page Range option, this would be easy to do. Once you load the TIFF document into the File Listing, the application will automatically set the Page Range as First Page-Last Page.

Reverse Sort Order

If you need to reverse the order of the pages, just change the Page Range to Last Page-First Page order, for example “1-100” to “**100-1**”. If all you need is to swap the order of several pages such as Page 30 to 35 then set the page range to “1-29,**35-30**,36-100”

Changing the Order of Several Pages

If you have a document with 100 pages and you need to switch Page 5 with 50, you would need to set the page range as “1-4,**50**,6-49,**5**,51-100”. This will effectively switch the position of Page 5 and 50.

Removing Pages

As with the above example, if you need to remove Page 5 and 50, set the page range as “1-4,6-49,51-100”.

Duplicating Pages

To Duplicate a page or pages within the document, say you need to duplicate page 4-5 in several locations, you could set the page range as say “1-10,**4-5**,11-30,**4-5**,31-50”.

Inserting Documents or Images with a Document

Inserting pages from a document or images into an existing image is easy with ComboTIFF Pro. What you need to do is to first load the document you want the other pages inserted to, followed by the second file and then load the original document again. Set the page ranges to reflect where the new pages will be inserted in then set the Image Format to “Merge All Documents to a Single Multipages TIFF” and the MultiTIFF Filename and you are ready to go.

Filename	No of Pages	Page Range
doc164.tif	163	1-100
M 20.tif	2	1-2
doc164.tif	163	101-163

In the above example, we have doc164.tif and we need to insert a document called M 20.tif after page 100. What we do is to set the first doc164.tif's page range from 1-100 and the second doc164.tif from 101-163. The resultant TIFF file will come with 165 pages.

Splitting the Multipage TIFF into individual pages

Using one of the "Extract to Multiple Single Page" option will allow you to extract all or your defined page ranges of the tiff file into individual pages. You can also use this option to convert images between the supported formats.