

iRedSoft
Image
Resizer
Version
5



Table of Contents

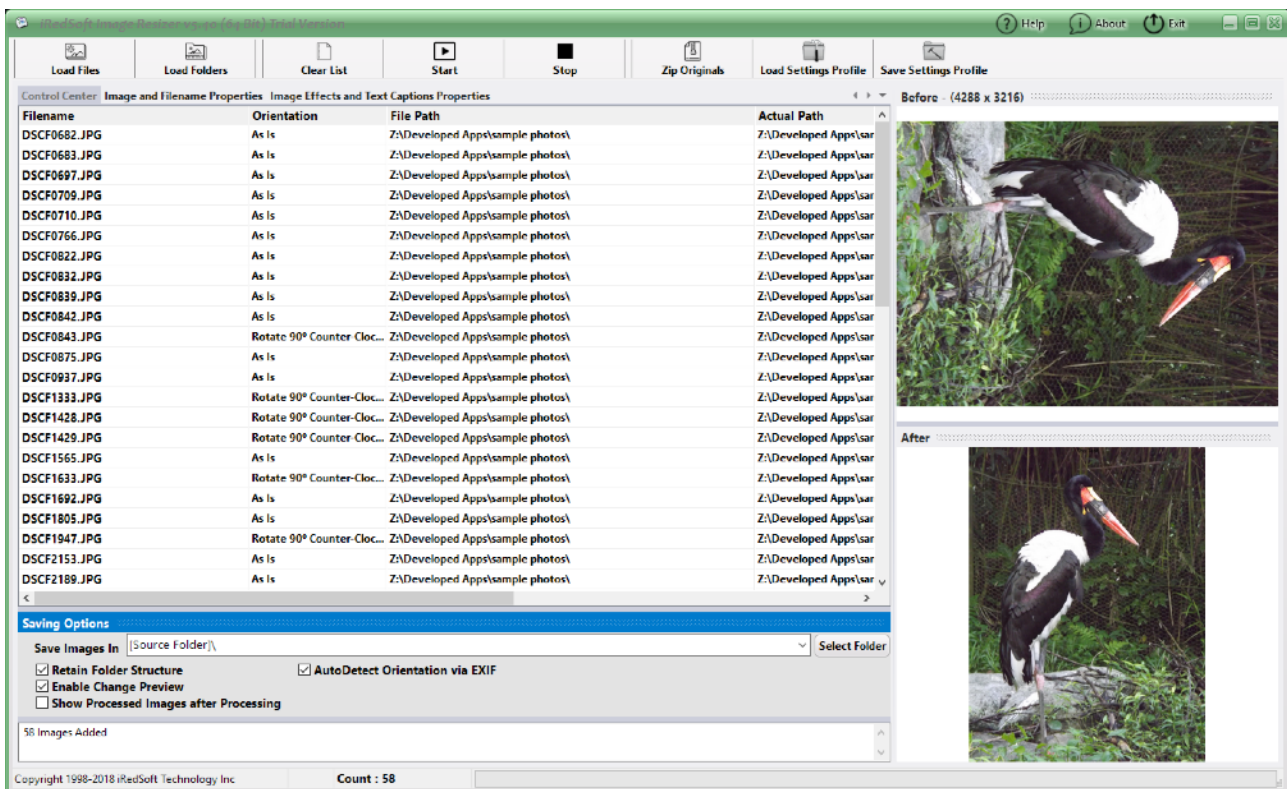
Introduction	3	
What's New in v5	3	
System Requirements	5	
Licensing Information	6	
Version Information	7	
Contact Information	10	
Application Description	11	
Icon Bar	12	
Control Center	13	
Image and Filename Properties	15	
<i>Image Settings</i>		15
<i>Filename Changer</i>		18
Image Effects and Text Caption	19	
<i>Image Effects</i>		19
<i>Text Caption Properties</i>		20
<i>Saving Options</i>		21
Additional Information	22	
<i>Basic Steps</i>		22
<i>Settings Profile</i>		22

Introduction

iRedSoft Image Resizer is a Windows based Batch Image Processor which handles most of the common features required by a modern digital photographer and much more.

iRedSoft Image Resizer v5 is our fifth major version which we rewrote from bottom up while adopting the best and well used features while incorporating requests from our users over the years to develop the best application that we could while embracing the latest in technology.

iRedsoft Image Resizer v5 is a major milestone on two fronts, it is the first version we built with Windows 8 and touch controls in mind and also our offering of iRedSoft Image Resizer which comes in two variant, a 32 Bit and a 64 Bit versions.



The power of iRedSoft Image Resizer is in its Batch Processing ability, this allows you to perform repetitive mundane task with ease through just a few mouse clicks. This task includes resizing, renaming, adding text captions, apply effects and rotating images, just to name a few.

What's New in v5

- **Both 32 Bit and 64 Bit Support.** The 64 Bit Supports Windows 8 x64, Windows 7 x64 and Windows Vista x64 which allows you to address more than the 4 gigabytes thus allowing you to process large images much faster. On a 32 Bit version, iRedSoft Image Resizer would use the hard drive to perform the image

processing.

- **Improved Memory Management.** Rewriting the application allows us to strip all the code cluster which allows us to reduce the memory usage and a huge leap in performance and speed.
- **Improved Drag and Drop.** In prior versions, dragging and dropping only supports image files but with v5, you can drag and drop folders too.
- **AutoDetect Orientation via EXIF.** Most modern digital cameras now comes with a digital orientation sensor to record the orientation of the images. With this new feature, iRedSoft Image Resizer will use this detail in the EXIF header to auto-set the orientation settings in Control Center.
- **Visual Crop Dimension Setting.** In the past, to determine a crop dimension you would need to manually enter the Crop X, Crop Y, Width and Height Properties but beginning from v5, you could do so using the Before Preview Window and select the dimensions visually.
- **Resize by Pixels.** This function will let iRedSoft Image Resizer determines when the images should be downsize or upsize to meet the set dimensions.
- **Color Space Support.** This function allows you to change the Color Space of the images.
- **ICC Profile Support.** Now included in v5, we support any embedded ICC Profile
- **Single Page TIFF Reading and Saving Support.** Although this is not a typical image format supported by digital cameras, we included this as it is commonly used platform in the office environment for document digitization.
- **Batch Filename Changer Support.** Included in iRedSoft Image Resizer for the first time is the Filename Changer support. This allows you to generate filenames which contains a running number with or without a prefix and suffix. This will allow you to generate more meaningful filenames which would be more descriptive.
- **Grayscale JPEG Support.** iRedSoft Image Resizer v5 now supports generating 8 Bit Grayscale JPEG images.
- **Reworked of the Image Effects Options.** In v5, we separated all the image effects so that allow you to apply more than 1 effect at a time to the images.
- **Old Photo, Negative, Sepia, Grayscale and Equalize Effects Added.** We included several new effects to the arsenal to have spruce up your images.
- **Improved Drop Shadow Effect.** We rewrote Drop Shadow effect which includes the gaussian effect which looks more natural.

- **Text Caption Support.** This allows you to tag on a Text Caption to the images with or without Drop Shadow effect.
- **XML Style Settings Profile File.** We moved the Setting Profile from an INI format to the XML Style. This allows us to store more complex settings information which includes Unicode text.
- **Improved Error Checking.** We included several additional error checking and error handling in the image processing routine which would skip erroneous images without crashing.

System Requirements

Operating System

32 Bit Edition - Windows 10 (32 Bit & 64 Bit), Windows Vista, Windows 7 (32 Bit & 64 Bit), Windows 8 (32 Bit & 64 Bit)

64 Bit Edition - Windows 10 (64 Bit), Windows Vista (64 Bit), Windows 7 (64 Bit) and Windows 8 (64 Bit)

* The 32 Bit Edition would work on all supported 32 Bit or 64 Bit Windows Operating System but the 64 Bit Edition will only work on a 64 Bit Windows Operating System.

Computer Configuration

Any Intel or AMD Based Desktop, Laptop or Tablet with at least 1 gigabyte RAM and 1 gigabyte Free Storage Space.

iRedSoft Image Resizer **will not work** on computers or tablets running Windows RT.

Licensing Information

iRedSoft Image Resizer v5 is offered as a “Try-Before-You-Buy” application which permits you to try this application risk-free for a 14 days period to determine if this application meets your needs before purchasing a license.

We understand that it is easy to oversell on the features of an application but after purchasing it, you find that the application is not what is made up to be. We did not feel that is the right approach to selling an application. What we wanted to do is to be able to provide a solution to meet your needs.

Moreover, there are a number of Windows Operating System versions used by millions of computers running on different configuration which bring about the possibility that our application may not be optimized or function as it should on a small percentage of these computers. Allowing you to test run our application would isolate this situation before you part with your hard-earned money.

Once you are satisfied with the trial version, you may proceed to purchasing a license to this application through the order link hosted on our website at <https://www.batchimage.com/registration>.

The Standard Retail Price of iRedSoft Image Resizer v5 is US\$14.95 . The FastSpring order link provides you to order via several methods including secured credit card and paypal. It may translate the prices to your currency for your convenience.

Upon purchasing a license through FastSpring , you would receive an email which includes your registration details within an hour of a successful purchase. If you do not receive the email, please check your spam folder as it may have ended there. If it is not available, please contact us at sales@batchimage.com with the information you used to register (excluding the credit card details).

Our license is based on a named user which means that it is to be exclusively used by the named user. You may install this application and apply the registration keys on up to 3 computers provided that you are the exclusive user. You would be required to purchase additional licenses if this application is used by more than one person.

The license key grants you to right to use either the 32 bit or 64 bit version of this application or both.

You will be entitled to all minor v5.x updates. This will contain feature updates and/or bug fixes. You will be entitled to a discount to any major upgrades.

Do check our website regularly for any updates. All you need to do is to download the latest version and install it over your current installation.

Version Information

- v5.0 - Initial Release
- v5.0.1
 - Fixed Crash when DPI is set to “As Is”
 - Remove Border around “Before” and “After” Preview Window
 - Fixed Bug which causes Settings to revert to last saved when navigate from another App back to iRedSoft Image Resizer
 - Fixed Bug which causes “After” Preview Image to show even the “Show Processed Images after Processing” option is unchecked.
- v5.0.2
 - Fixed Bug which causes “Upsize By Pixels”, “Downsize By Pixels” and “By Percentage” options to be ignored.
 - Disable Typing on non-editable Drop Down Box
- v5.0.3
 - Fixed Bug which causes the images to fail to rotate when Use EXIF option is enabled.
 - Updated Imaging Engine
- v5.0.4
 - Reworked the Downsize by Pixel routine which causes the ratio aspect not to be respected and in some cases, freezes the application
- v5.0.5
 - Fix Bug which causes the Processed Images not to be saved
- v5.0.6
 - Fix Bug which causes the Processed Images not to be saved if a full qualifying path is provided
- v5.0.7
 - Fix Bug which prevents the Profiles to be loaded when Load Profile is used
- v5.0.8
 - Fixed Bug which causes an “Out of Bound” error when images are dragged and dropped to the application.
 - Updated Imaging Engine
- v5.0.9
 - Rewrite Resize By Frame codes
- v5.10
 - Fixed Bug which causes a limited number of GIF where a black background is added when converted to PNG or JPG
- v5.11
 - Fixed Bug which causes several checkboxes not to be saved
- v5.12
 - Updated Imaging Engine
- v5.14
 - Fixed Bug which causes the application to crash when Resizing Method is set to Resize By Frame and Width and or Height options are set to 0
 - Updated Imagine Engine
 - Updated User Interface
 - Improved Memory Management

- v5.15
 - Fixed bug which causes the Resizing Method to switch to “By Frame” when the Crop Dimensions are selected
 - Fixed bug which causes incorrect Width and Height Dimensions to be set
 - Fixed bug which causes the By Cropping method not to crop with the right dimensions

- v5.16
 - Updated Image Engine

- v5.17
 - Improved Memory Management
 - Updated Interface

- v5.18
 - New Code Signing Certificate

- v5.19
 - Added Resize by Pixels method. This will let iRedSoft Image Resizer determine when to downsize or upsize the images.

- v5.20
 - Fixed Bug which causes the PNG Transparency not to be added

- v5.21
 - Fixed Bug which may intermittent show degraded toolbar icon images

- v5.22
 - Improved Handling of Faulty Images to prevent crashes in application

- v5.23
 - Internal Optimisation and fixing a memory leak

- v5.24
 - Updated Imaging Engine
 - Improve performance in previewing pictures
 - Switch from Double Click to Single Click to Preview pictures
 - Support Arrow Up and Down to navigate between previews

- v5.25
 - Fixed Bug which causes the images to show up as 1/8th the original size.

- v5.26
 - Fixed bug which causes the PNG file not to be saved when the PNG Quality is set to above 85%

- v5.27
 - Updated Imaging Engine

- v5.28
 - Fixed an issue with the latest Windows update which causes the app not to launch
 - Fixed a rare bug which causes a Division by Zero error when the application is unable to determine the previously used JPEG compression.

- v5.29
 - Fixed alignment of the Exit button when the app is maximize
 - Improve loading speed of photos to the File Listing
 - Fixed issue with Drag and Drop which loads unsupported files to the list
- v5.30
 - Upgraded to the new framework
 - Reworked the Registry and Template Loading and Saving Module
 - Fixed issue with settings not updated when that particular setting is being edited when saving
- v5.31
 - Fixed bug which causes the Save In Folder entry not to be saved
- v5.32
 - Improved JPEG Image Preview Speed
 - Fixed bug which causes the Dropdown box entry did not load properly
- v5.40
 - Fixed Text Font Size issue which causes the text captions to not show.
 - Updated User Interface with a Smaller Toolbar

Contact Information

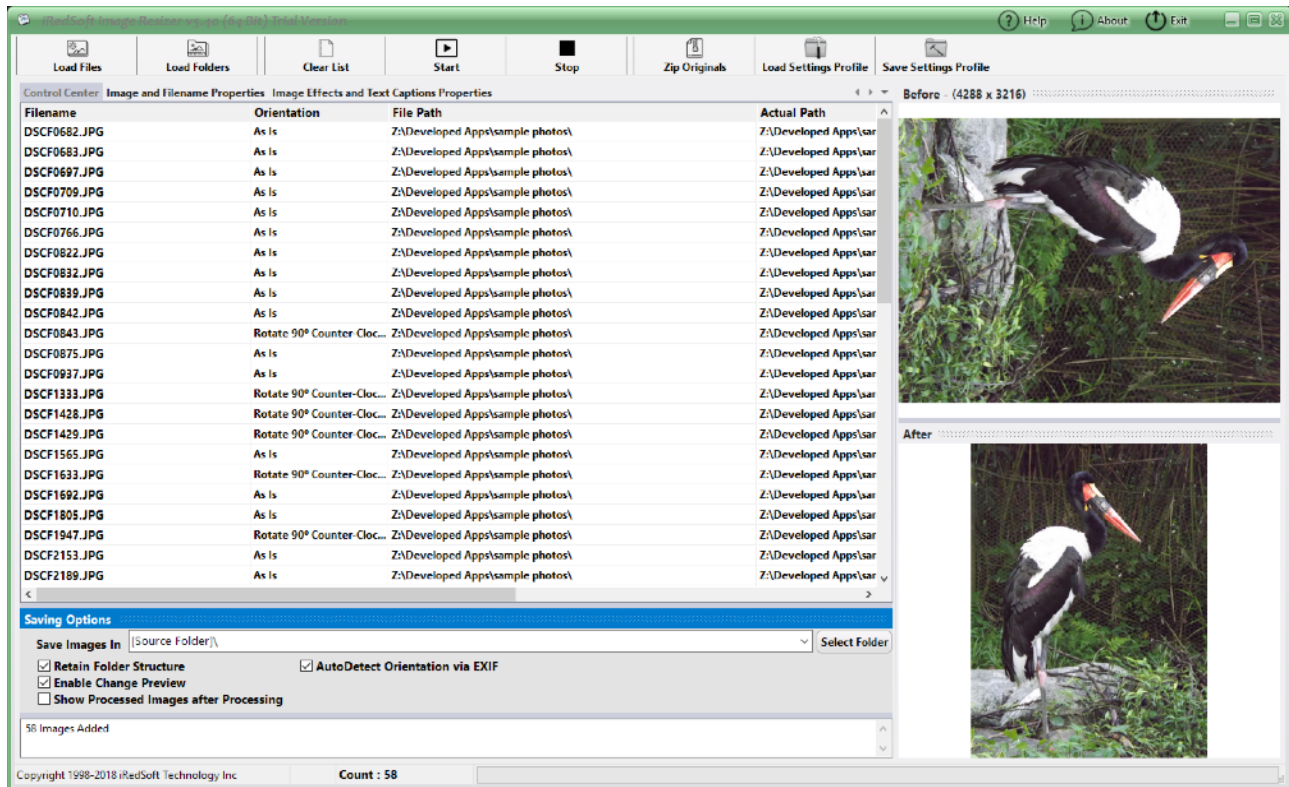
We value your comments, suggestions, bug reports as that would enable us to enhance and improve our application. Our goal would be to develop the best fit application to simplify your task. We will respond within 24 hours (normally less).

For all technical support, please contact us at support@batchimage.com .

For all sales support, please contact us at sales@batchimage.com .

As we do offer several applications for sales on both the Windows and Mac platform, to allow us to assist you, please do provide as much information as possible and do include the application name and version.

Application Description



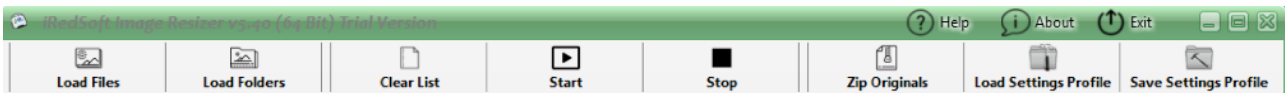
When you launch the application, you would be greeted with the above screen, Control Center.

There are 5 core parts to the interface, the icon bar (on the top), Control Center/Image and Filename Properties/Image Effects and Text Caption Properties tab, Saving Options (at the bottom), Before and After Preview (on the right).

We will look at all the various components to the interface in details very soon.

- **Icon Bar** - This contains all the controls to Load and Start the batch image processing.
- **Control Center** - This contains the list of image files to be processed.
- **Image and Filename Properties** - This contains settings to determine how you want to process the images including resizing and filename properties.
- **Image Effects and Text Caption Properties** - This contains settings which would add the Wow factor to your images and the inclusion of Text Caption to your images.
- **Saving Options** - This includes settings on where you want to save the processed images in and other miscellaneous settings.
- **Before and After Preview** - This includes the thumbnails of the images which is being processed.

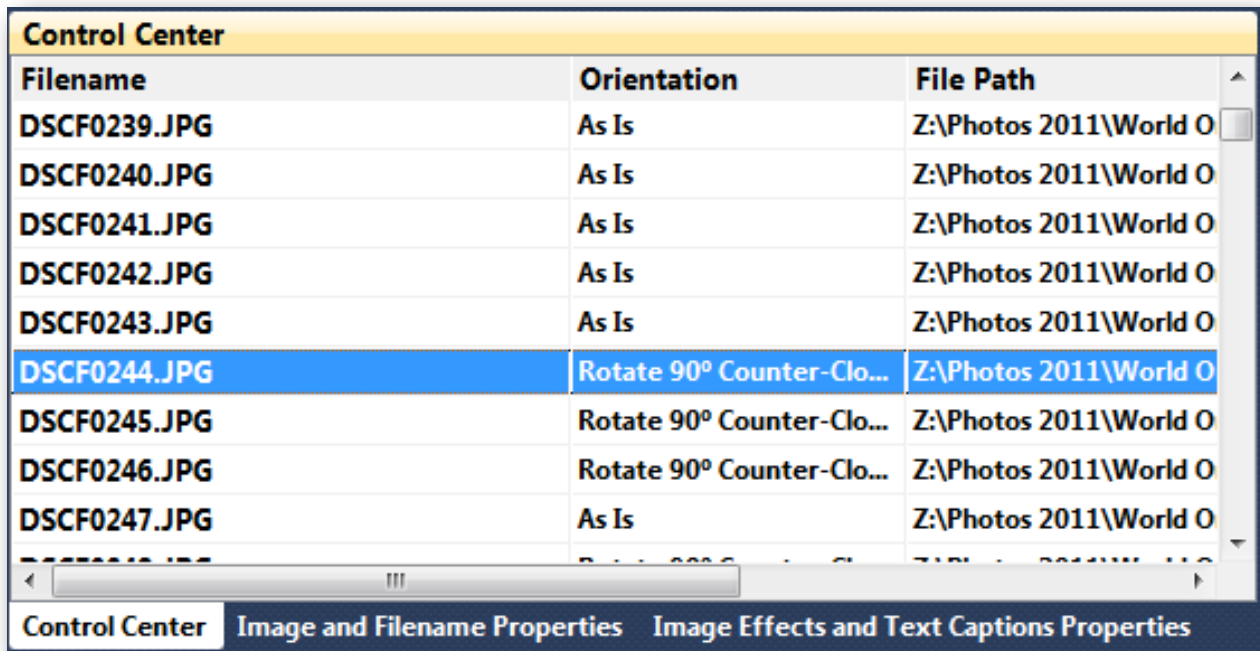
Icon Bar



With the introduction of Windows 8 which would operate on both Personal Computers and Tablet, we redesigned the icon bar to be finger touch friendly. As such, we removed the Menu Bar and included those controls in the Icon Bar.

- **Load Files** - This button would allow you to select image files to be included to the Control Center's file list. You will be able to selectively pick which images you want to include.
- **Load Folders** - This button will allow you to pick a folder of images to be included to the file list. You will be prompted if you want to include all sub-folder recursively too.
- **Clear List** - This button will allow you to clear the file list including both the Before and After Preview Windows.
- **Start** - Once you loaded on the files to the list and are happy with the Settings, clicking the Start Button will get the ball rolling where it would go through all the images and applying the settings to the images.
- **Stop** - There are times in which you may want to stop the entire image process in order to change some settings, the Stop button enables you to do so. To prevent any data corruption, any image currently being processed would be saved before the process get terminated.
- **Zip Originals** - This button would allow you to add all the images on the list to a zip file.
- **Load Settings Profile** - This allows you to load the XML Style Settings Profile file. The Settings Profile contains all the settings used in the application.
- **Save Settings Profile** - This allows you to save the currently used settings into a XML Style Settings profile file.
- **Help** - This button will bring up this PDF based Help File.
- **About** - This will bring up the About Window.
- **Exit** - This button will save all the setting used in the System Registry before exiting from the application.

Control Center



Filename	Orientation	File Path
DSCF0239.JPG	As Is	Z:\Photos 2011\World O
DSCF0240.JPG	As Is	Z:\Photos 2011\World O
DSCF0241.JPG	As Is	Z:\Photos 2011\World O
DSCF0242.JPG	As Is	Z:\Photos 2011\World O
DSCF0243.JPG	As Is	Z:\Photos 2011\World O
DSCF0244.JPG	Rotate 90° Counter-Clo...	Z:\Photos 2011\World O
DSCF0245.JPG	Rotate 90° Counter-Clo...	Z:\Photos 2011\World O
DSCF0246.JPG	Rotate 90° Counter-Clo...	Z:\Photos 2011\World O
DSCF0247.JPG	As Is	Z:\Photos 2011\World O

Control Center | Image and Filename Properties | Image Effects and Text Captions Properties

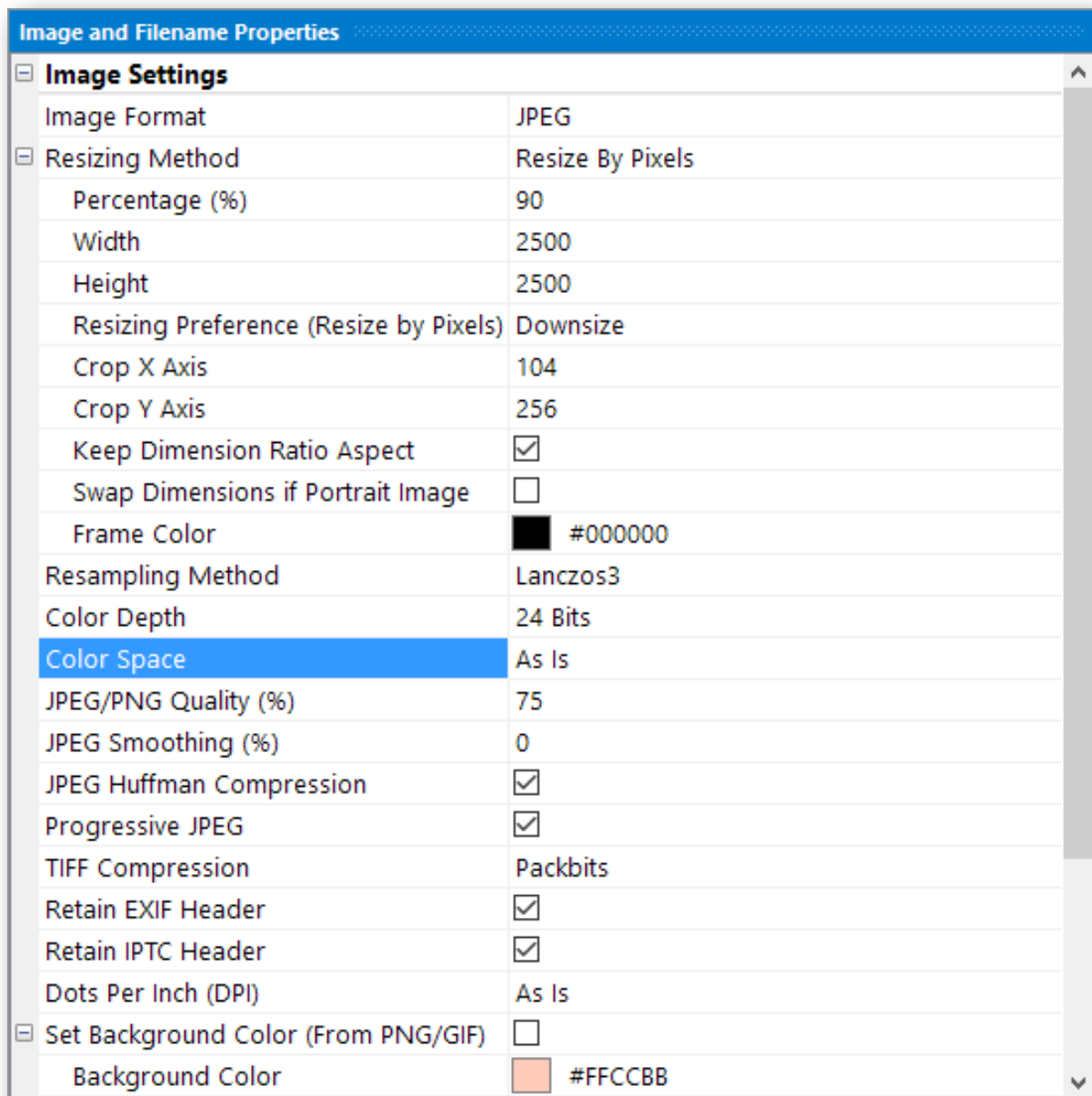
The Control Center form is the main part of the application which contains the image filenames that you want to process.

There are several things you can do with the Control Center.

- **Drag and Drop** - You could grab a list of image filenames from the Windows Explorer and drop it to the Control Center File Listing. This will include the images to the file list. If you include folder names, it will include all supported images in the folders to the list.
- **Previewing Images** - If you single-click on the filename, iRedSoft Image Resizer would load up a thumbnail image in the Before Preview Window. You can navigate between the photos by using the arrow up and down to navigate between them.
- **Manually Changing the Image Orientation** - By clicking in the Orientation column, you will be prompted with a dropbox of image orientation options.
- **Delete Image** - Highlight the image which you want to delete and do a right-mouse click (or bring up the contextual menu) and select Delete. If you select several images, only the first one would be deleted.
- **Mass Changing of Image Orientation of All Images** - Bring up the Contextual Menu within the File Listing and selecting the Orientation Option under “Set All Orientation To” option.
- **Doing Selective Image Orientation Change** - Select the images which you want to change the orientation and bring up the Contextual Menu and select any Orientation Option under “Set Selective Orientation To” option.
- **Sorting List in Alphabetical Order** - If you click on the “Filename” header, it will toggle the sorting of the filenames on the list either in Ascending or Descending order.

- **Individual Sorting within the List** - Select a filename on the list and while holding the left mouse button down, you can move this filename to anywhere in the list. You will see a red guiding line which would be where the filename would be moved to. Just release the mouse button to move the filename. The sorting may be useful when you want to rename the files using the running number.

Image and Filename Properties



This tab includes two set of controls, the Image Settings and the Filename Changer Settings.

Image Settings

- **Image Format** - The supported options are As Is, JPEG, PNG, BMP, GIF, TIFF and JPEG 2000. The processed images would retain its current image format when “As Is” is selected.
- **Resizing Method** - The supported options are As Is, Downsize by Pixels. Upsize by Pixels, Resize By Pixels, By Percentage, By Cropping, By Frame, 1/4x, 1/3x, 1/2x, 2/3x, 3/4x, 1 1/2x, 2x.

Here is the list of settings relevant to the resizing method

Resizing Method	Settings Used	Remarks
As Is	None	No Resizing Performed
Downsize By Pixels	Width, Height, Keep Dimension Ratio Aspect, Swap Dimensions if Portrait Image	The Width and Height is used to set the Maximum Image Dimensions
Upsize By Pixels	Width, Height, Keep Dimension Ratio Aspect, Swap Dimensions if Portrait Image, Resizing Preference (Resize By Pixels)	The Width and Height is used to set the Minimum Image Dimensions
Resize By Pixels	Width, Height, Keep Dimension Ratio Aspect, Swap Dimensions if Portrait Image	When Width and Height are larger then Downsizing will apply, otherwise the image will be upsize.
By Percentage	Percentage (%)	
By Cropping	Width, Height, Crop X Axis, Crop Y Axis	You could set all the settings visually by creating the dimension in the Before Preview Windows and using the Contextual Menu to set the Dimensions in Settings
By Frame	Width, Height, Frame Color	The Width and Height sets the frame of the images where the image would be resized with ratio aspect and any dimensions which is smaller would be padded
1/4x, 1/3x, 1/2x, 2/3x, 3/4x, 1 1/2x, 2x	None	

- **Percentage** - This option is used by “By Percentage” to determine the image size. The application will calculate the width and height to the nearest whole pixel.
- **Width and Height** - This is the dimensions in pixels. When either dimension is set as “0”, the actual image dimension would be used.
- **Resizing Preference (Resize by Pixels)** - Typically when the Resize by Pixels is used as a Resizing Method, if both the Width and Height setting is larger than the image dimension then the image will be downsize otherwise it will be upsize. However when one dimension is larger and the other is smaller, use this setting to determine the course of action.
- **Crop X Axis** - This is the left most point when cropping
- **Crop Y Axis** - This is the top most point when cropping

- **Keep Dimension Ratio Aspect** - When this option is selected, the Ratio Aspect is respected when using the “Downsize By Pixels” or “Upsize By Pixels”.
- **Swap Dimensions if Portrait Image** - Typically when determining width and height, iRedSoft Image Resizer will treat each image as landscape and takes the horizontal axis as width and the vertical axis as height. However, if you want the application to treat the longest dimension as width, check this option.
- **Frame Color** - This determines the background color when “By Frame” is selected.
- **Resampling Method** - There are various resampling method being offered. Using Lanczos3 will provide the best resampling results but is the slowest. None would offer the fastest but rough resampling method. Experiment between the options to determine what would suit your images.
- **Color Depth** - Set the number of colors to be used in the images. JPEG images are typically 24 bit color images and when you set the Color Depth, the application would visually reduce the number of colors but still save them as 24 bit JPEG images.
- **Color Space** - For JPEG and JPEG 2000 images, setting the Color Space to “Gray Scale” would generate a Grayscale image.
- **JPEG/PNG Quality (%)** - When the application loads the images, the resultant image would be considered a new image. When you set this option to “100%”, the application will attempt to replicate the same quality used by the original images. Based on our experience, a JPEG Quality of between 75 to 80% would yield the best file size/quality ratio in which you would not see any visible drop in quality. This settings is being used in JPEG, JPEG 2000 and PNG images.
- **JPEG Smoothing (%)** - When you apply a low JPEG Quality to an image, you would inevitably see jagged edges or JPEG artifact appeared in the picture especially between contrasting colors. Applying JPEG Smoothing is like applying a blurring between that JPEG artifact. This would help to a certain extend but if possible keep JPEG Smoothing from between 0 to 5%.
- **JPEG Huffman Compression** - The Huffman Compression is a complicated mathematical formula used in optimizing the JPEG files by finding the most efficient method of grouping and sorting internal data. Enabling this option may result in a more efficient usage of file space.
- **Progressive JPEG** - Typically, a JPEG image would fully load on a computer before it is displayed which is not an issue if you are viewing the images on a local computer or over a fast internet connection. However if the JPEG image is huge, it could take some time to be completely loaded over the internet on a web browser and by enabling this option would allow the web browser to progressively display the picture while it gets loaded.
- **TIFF Compression** - This provides several options for compressing a TIFF file. The G3 and G4 compressions are typically used for black and white tiff files as these were standard used by fax machines. LZW and Packbits are commonly used compression algorithm used for color pictures. The JPEG format v7 is lesser used format and may not be supported on all viewers.

- **Retain EXIF Header** - The EXIF Header is used mainly by digital camera to store camera settings used in taking the picture and may contain also include a thumbnail of the JPEG photos. This header does add up several kilobytes to the file size. If you require a smaller file size especially when merely generating thumbnails, unchecking this option would inevitably reduce the file size by about 15 to 20 kilobytes depending on the details stored.
- **Retain IPTC Header** - In the Press World, photos may embed story headlines, text and other details pertaining to the photos. It makes for a great way of storing information. However, this header is typically not being used on standard cameras or the general public.
- **Dots Per Inch (DPI)** - In the past, Dots Per Inch was an important information which determines the actual print or display dimensions in a desktop publisher or printer. In today's contexts, this is very rarely as model printers have their own interpolation algorithm to size images for print. Display devices now rely on the Width and Height in Pixels to display the images.
- **Set Background Color (From PNG/GIF) / Background Color** - Both PNG and GIF Images allows you to set a background color which would then appear as "transparent". By enabling this option and setting the Background Color, the PNG and GIF images saved would use this color as the transparent background color to be transparent.

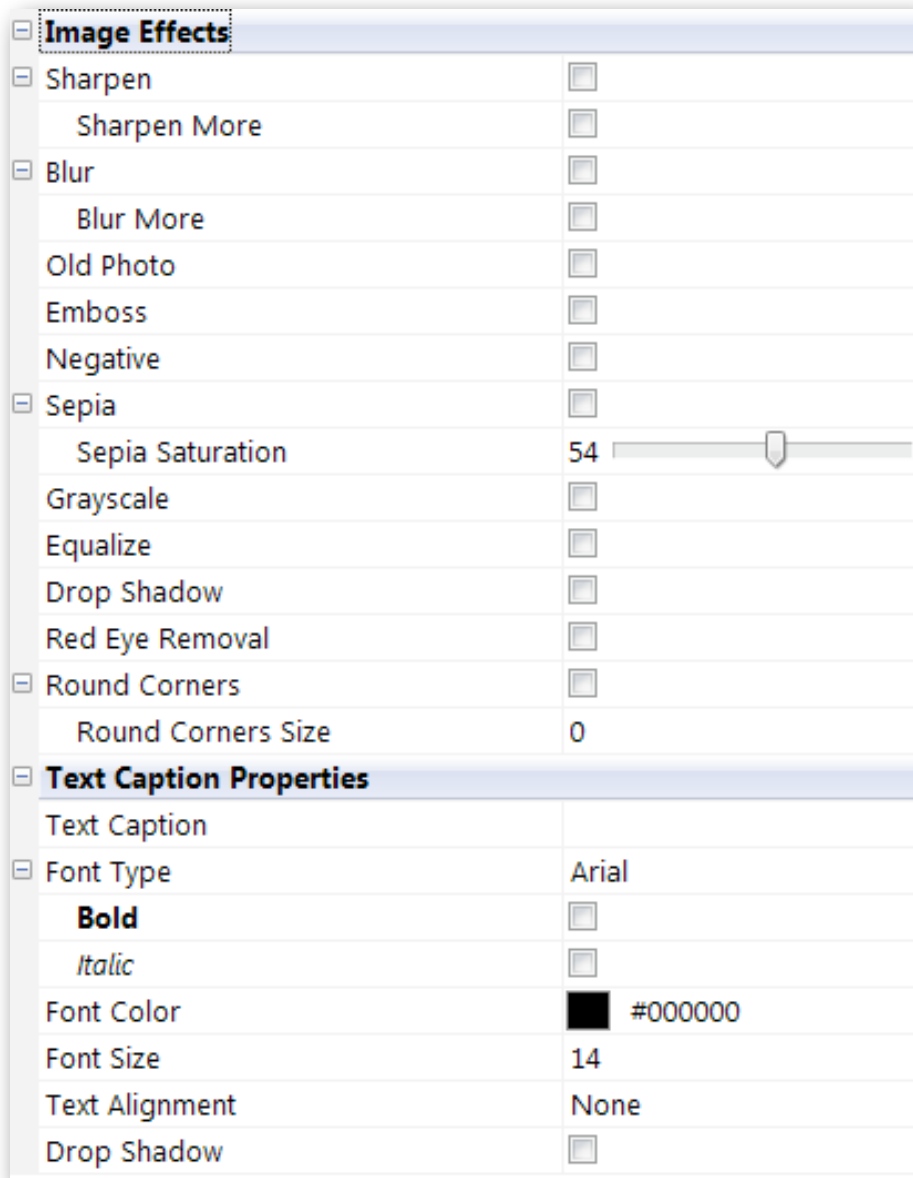
Filename Changer

The Filename Changer allows you to batch rename the images to your own defined prefix and suffix with a running number option to make it more descriptive and relevant compared to what the digital camera would generate.

- **Enable Filename Changer** - Checking this option would enable this option otherwise the images would retained the original filenames (with the file extension change if there is a change of image format).
- **Prefix** - This tags on the beginning characters, word or phrase to the filename.
- **Suffix** - This tags on the ending characters, word or phrase to the filename.
- **Start Number** - This will be the first number to be used for the first filename on the list.
- **Number of Digits** - This determines how to zero pad the numbers used. Setting this option to "4" and a "Start Number" set to "1" will yield the first number as "0001". If the first number has more digits then the "Number of Digits", this option would be ignored.
- **Add Prefix and Suffix Only** - When this option is checked, the running number is ignored and the Prefix and Suffix (where applicable) would be tagged to the original filename.

The format for the filename would be Prefix + Number + Suffix + File Extension

Image Effects and Text Caption



This tab contains two sets of controls, the Image Effects and Text Caption Properties.

Image Effects

Image Effects allows you to enhance your images and give it some pizzazz or spruce up the photos. You could mix and match different image effects with v5.

- **Sharpen** - This will intensify the details in the images.
- **Sharpen More** - This will add double the intensity of Sharpen.
- **Blur** - This will blur the details in the images.
- **Blur More** - This will add blur the details even more in the images.
- **Old Photo** - This effect will fade the photo to give it that vintage look.

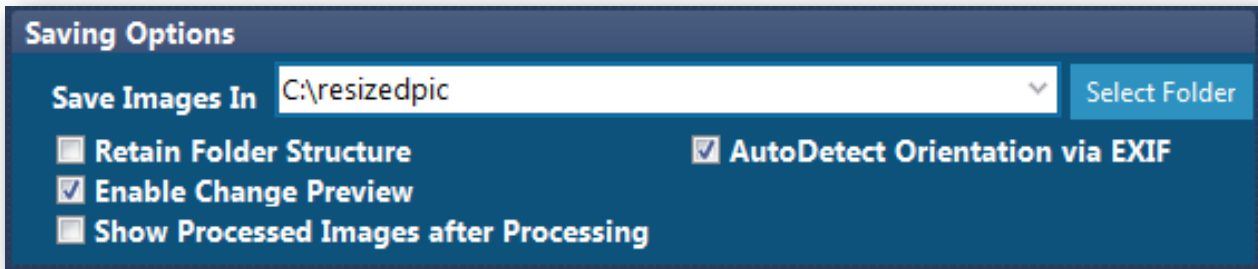
- **Emboss** - This apply the emboss effect which brings out the edges and ridges in the images.
- **Negative** - Applies the Negative Film Effect
- **Sepia / Sepia Saturation** - The Sepia effect adds a rich brownish effect to the images. With the Sepia Saturation track bar, you can vary the sepia saturation intensity.
- **Grayscale** - Convert the Color image to a Grayscale image. For JPEG Images, this will convert the image to a 8 Bit Grayscale JPEG Image instead of a 24 Bit Color image.
- **Equalize** - This will apply an auto color equalize effect to the image.
- **Drop Shadow** - This applies a drop shadow effect to the image file. The Image will be resized to apply the drop shadow.
- **Red Eye Removal** - Applying this would cause the application to try to remove the red eye effect in the image.
- **Round Corners / Round Corner Size** - This applies a rounded corner around the images and the radius of the round corner would be determined by the round corner size.

Text Caption Properties

The Text Caption Properties allows you to add a single line text caption onto the image. This could include a Copyright Tag or Description to the image.

- **Text Caption** - This is the text which would be added to the Image.
- **Font Type** - This is the font which would be used for the Text Caption.
- **Bold** - Bold the Text Caption
- **Italic** - Apply Italic to the Text Caption
- **Font Color** - Set the Font Color
- **Font Size** - The Font Size in Pixel used for the Text Caption
- **Text Alignment** - When the “Text Alignment” is set to “None”, no text caption is added.
- **Drop Shadow** - Apply Drop Shadow to the Text Caption

Saving Options



The Saving Options contain the Saving Options and other miscellaneous settings.

- **Save Images In / Select Folder** - This option is essential as it determines where the processed images would be saved to. Use the “Select Folder” to pick or create a folder. If the Output Folder matches the Input Folder, the original files would be overwritten and cannot be recovered so it is paramount to use a different folder. The Drop down box would contain the last 5 user defined folders. Right-mouse click to bring up the Contextual Menu if you want to delete these folders. Selecting “[Source Folder]\” would allow you to overwrite the original files.
- **Retain Folder Structure** - When the images are added to the file listing using either “Load Folders” or by Dragging and Dropping the images with sub folders, you could retain the same folder structure by enabling this option. However if the images are added using the “Load Files” method, this option would be ignored. Disabling this option would cause all output files to be saved to the named output folder.
- **Enable Change Preview** - You could preview the changes to be made to the images by checking this option without saving it. With this option checked, double-click on the image you want to preview and the changes would appear in the After Preview Window. It may take a while for the preview to appear if the file is huge or there is a lot of changes to be applied.
- **Show Processed Images after Processing** - With this option unchecked, the images would be processed without the processed image showing up in the After Preview Window. This will result in a slightly faster processing. However if you want to see the changes made, enable this option.
- **AutoDetect Orientation via EXIF** - When this option is enabled, all images to be included to this list would be evaluated individually to determine if there is any need to apply the orientation change. The images would not be oriented at this time but the orientation which need to be applied would appear on the file listing which you can manually change if needed. If there is no EXIF header or the header does not contain the orientation tag, the image orientation would be tagged as “As Is”. However when this option is enabled, loading file listing especially for a long list of images could take several minutes to complete. If you do not need the application to apply this test, do disable this option.

Additional Information

Basic Steps

1. Use either “Load Files”, “Load Folders” or using the Drag and Drop method to add files to the list. If you have a lot of images which are Portrait Orientation which you need the application to rotate and your camera supports tagging of image orientation, enable the “AutoDetect Orientation via EXIF” before importing the files.
2. Set the “Save Images In” option by using the “Select Folder” option or by selecting a formally used folder using the drop down box.
3. Apply the changes you want to apply to the images using “Image and Filename Properties” and/or the “Image Effects and Text Caption” tab.
4. To determine if the changes is what you want, ensure that the “Enable Change Preview” is checked and double click on any of the images. This will apply the changes without saving the changes.
5. Once you are satisfied with the changes, you could click “Start” and sit back and wait for the image processing to complete.

Settings Profile

The Settings Profile is a XML File which contains all the settings used by iRedSoft Image Resizer. This file is a text based file and you can view or edit with text editor.

You could create multiple settings profile by saving your most used settings which you can load when you need them. This will save you the hustle reconstructing the settings each time you want to use. You may also distribute this file to your colleague so that they do can recreate the settings you used.

At times if you come across a bug or require our assistance, we may require you to set us the settings profile file so that we can recreate the settings you used on our system.

To save the Settings Profile file, click the “Save Settings Profile” and select a folder and provide a filename for the file. To load the Settings Profile, click the “Load Settings Profile” and pick the file to use. The default file extension is “.irr”.