



Batch It Ultra 6

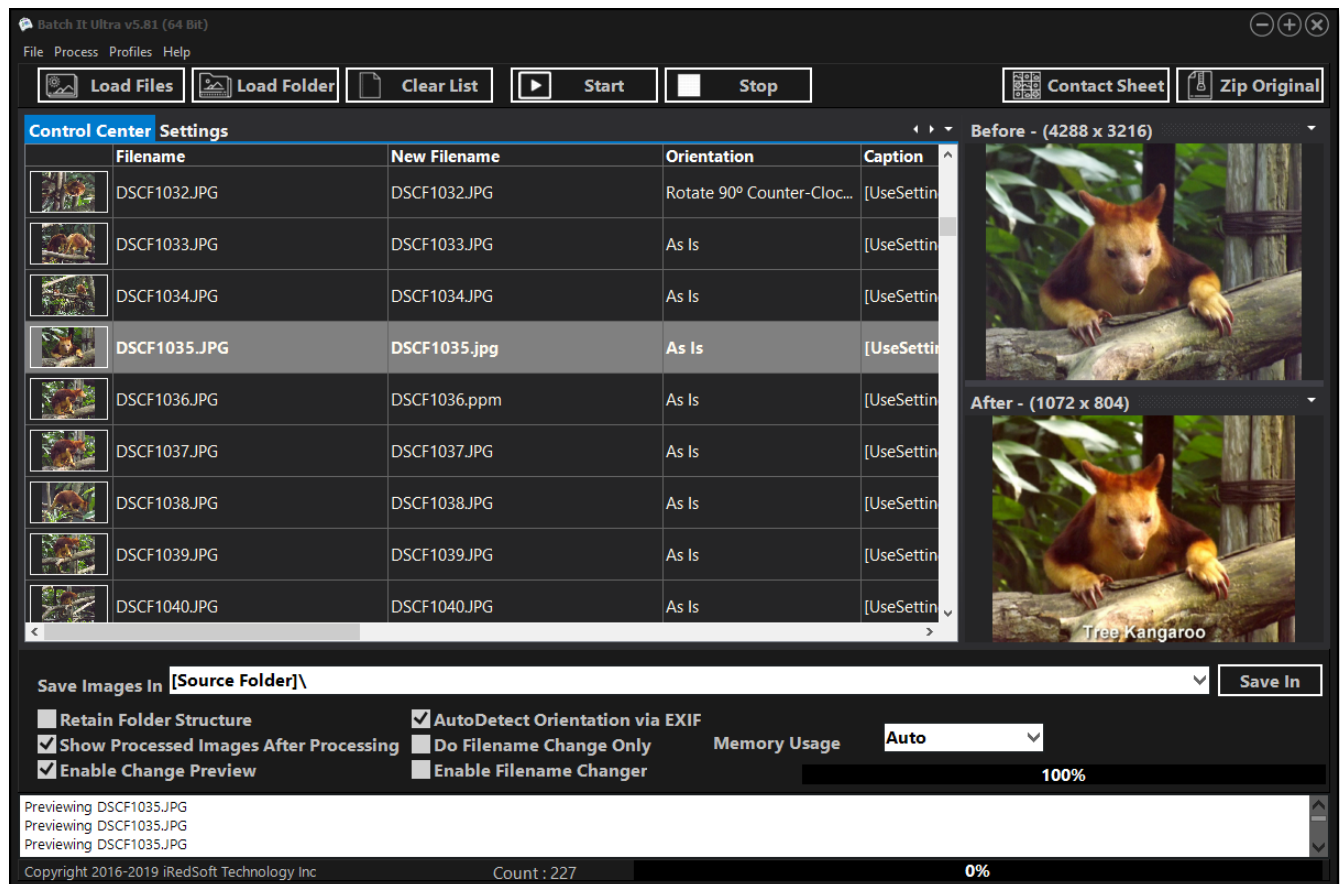
Table of Contents

Introduction	4
System Requirements	6
What's New	7
Version History	10
Pricing and Licensing	18
Trial Version	18
License Type	18
Pricing	19
Registration Benefits	19
Updates	20
Contact Information	21
Supported Image Formats	22
Supported Import File Formats	22
Supported Export File Formats	22
CSV and Text File Format	23
Settings Profile Files	24
Basic Tips	25
Loading Images to the List	25
Minimum Settings Needed	25
Upsizing Images	26
Contact Sheet	26

Text Captioning	26
Application Description	28
General Overview of the Interface	28
Control Toolbar	28
Control Center	30
Drag and Drop	33
Manual Sorting	33
Settings	34
Image & Filename Settings	36
Filename Changer	42
Renaming Non-Image Files	44
Text Captions Settings	45
Watermark Settings	51
Image Effects	53
Contact Sheet Printing	60
2nd Resizing Settings & 3rd Resizing Settings	63
Saving Options	65
Before Preview and After Preview	67
Command Line Parameters	69
Command Line Parameters Description	70

Introduction

Batch It Ultra v6 is the 6th major upgrade of our flagship Batch Image Processing Application since 1998. This upgrade includes a radical redesign of the application to support both the 32 bit and 64 bit Windows. It requires us to rewrite the entire code for the application from bottom up to support the new architecture.



The Key Features of Batch It Ultra 6 includes

✓ **Batch Resizing.** It supports popular resizing methods which includes Downsizing By Pixels, Upsizing By Pixels, Resizing By Pixels, By Percentage, By Ratio, By Cropping and By Frame. You can resize the photos while retaining its original Ratio Aspect or perform a batch cropping to remove any undesirable borders especially when the documents are being scanned. In order to allow you to fine-tune the resultant photos, Batch It Ultra offers you the option to utilize different Resampling Algorithm to enhance the image quality. The Resizing By Frame method allows you to keep the same width and height dimensions while keeping the same ratio aspect for all your images by padding the smaller dimensions with the frame color. Resizing By Frame can either downsize or upsize the pictures to fit.

In order to save you time, you can use Batch It Ultra to resize the same images into 3

different sizes in a single run. You can use this to make adjustment to your original file and save an additional two more sizes for perhaps for different screen displays or as thumbnail photos.

- ✓ **Batch Format Conversion.** It supports importing of images of many commonly used formats such as JPEG, PNG, TIFF (Single Page), BMP, JPEG 2000, PCX, Windows HD Photo, GIF, TARGA, DIB, RLE, PIX, Truevision Vista Graphic, Portable Bitmap, GFI Fax, Adobe Photoshop, Paint Shop Pro, Dr Halo Cut and Kodak PhotoCD. It supports export to JPEG, PNG, BMP, GIF, TIFF, JPEG 2000, PCX, PBM, PPM, PGM and Windows HD Photo Formats.
- ✓ **Image Effects.** Apart from resizing the images, Batch It Ultra has a comprehensive toolbox to enhance your photos. This includes Sharpen, Sharpen More, Blur, Blur More, Brightness, Contrast, Old Photo effect, Emboss, Negative, Grayscale, Auto Equalize, Red, Green, Blue, Drop Shadow, Red Eye Removal, Round Corners and Borders. It also offers the option to create a tiled image.
- ✓ **Batch Filename Changer.** It supports batch renaming of all your image files to a name which would be more relevant to you. It allows you to add a prefix and/or suffix to the existing filename, Add a running number to the images and even change the way the new filename would appear based on your preferences. You can utilize the Smart Replace method to change certain text within the original filename to something else. This will allow you to rename your image files to something more descriptive.
- ✓ **Batch Text Captioning and Watermark Support.** It is now easier to add Text Captions and Watermarks, Logos or Copyright Tags to your images with Batch It Ultra. For Text Captioning, Batch It Ultra offers 13 different location options to where you want to add the Text Captions on the image, this includes Top (Left, Middle, Right), Center (Left, Middle, Right), Bottom (Left, Middle, Right) and Vertical Left Bottom Up, Vertical Left Top Down, Vertical Right Bottom Up and Vertical Right Top Down. There is also two Random options if you do not know where you want to add the text captions. You could even have it add a border to place the text caption in. The Watermark Supports allow you to add PNG and GIF logos as your watermark in all the 9 locations. You get not only one but three Text Captions and Watermarks options so you would never be out of options.
- ✓ **Contact Sheet Support.** Contact Sheet can be useful tool especially when you want a lot of photos which you want to show or carry along with you. Batch It Ultra allows you to either print a contact sheet or save it into a JPG, PNG or Multipage TIFF file.
- ✓ **Backing Up.** We believe in backing up original files as any changes made to them would be irreversible and as such, we included the option to Backup all Images on the list to a ZIP file.
- ✓ **Settings Profile.** Batch It Ultra provides you with a comprehensive number of options to set up your images the way you like them and it would be troublesome to set them up for your different clients or work. This is where Settings Profile comes in. Once you are happy with the settings you made, you can save the Settings using the Save Settings Profile button which would save all the settings used as a XML file. You can make as many files as you want and be able to load them to computer running Batch It Ultra v6 without having to set

everything up all over again.

✓ **Loading Images.** It is relatively easy to load images to Batch It Ultra. You have 4 options available to you to do so. Load Files would allow you to selectively add one or more images to the list. Load Folders would allow you to include an entire folder of images with the option to include all sub folder files. Dragging and Dropping from Windows Explorer would allow you to add both Files and Folders of files to the list. And new in Batch It Ultra v6 is the option to load a CSV or Text File of File Names and Captions which you can create using a text editor or a spreadsheet.

✓ **32 and 64 Bit Support.** There is now two version of Batch It Ultra v6 available, one which is a native 32 Bit application for those using a 32 Bit Windows Operating System and another version which is fully 64 Bit for the 64 Bit Windows Operating System. The 64 Bit version takes advantage of the increased memory and is able to work faster and more efficiently and handle even bigger images without breaking a sweat.

✓ **Command Line Support.** The Command Line and Server license would allow you to control Batch It Ultra via a command line or run as a process through another program or script.

System Requirements

Operating System

32 Bit Edition - Windows XP, Windows Vista, Windows 8 (32 Bit & 64 Bit) and Windows 10 (32 Bit & 64 Bit)

64 Bit Edition - Windows Vista (64 Bit), Windows 8 (64 Bit) & Windows 10 (64 Bit)

* The 32 Bit Edition would work on all supported 32 Bit or 64 Bit Windows Operating System but the 64 Bit Edition will only work on a 64 Bit Windows Operating System.

Computer Configuration

- ✓ Any Intel or AMD Based Desktop, Laptop or Tablet
- ✓ At least 1 gigabyte RAM
- ✓ At least 1 gigabyte free storage space.

Batch It Ultra **will not work** on computers or tablets running Windows RT.

What's New

There are a significant changes coming from Batch It Ultra v4 both externally and internally.

The core changes include

- ✓ **Redesigned Interface** which is touch-friendly to support both the Touch-Screen based computers and Mouse based computers including Desktop, Notebooks and Windows 8 Tablets.
- ✓ **32 Bit and 64 Bit Native Support.** With the availability of Windows 7 and especially Windows 8, more computers are now equipped with a 64 Bit Windows Operating System. The 64 Bit Operating System can address a lot more memory and Batch It Ultra v6 takes advantage of that to allow you to process larger images, run larger list of images and do it a lot faster. Those using a 32 Bit Windows are not being left out as the total rewrite of Batch It Ultra v6 allows us to address many memory issues of the prior versions of Batch It Ultra.
- ✓ **Support for CSV and TXT File Import of Images.** One of the requested features over the years have been the support for importing a list of images generated from Excel which includes support for the new filename and captions. We thought long and hard about this and are happy to include this feature in Batch It Ultra v6. Not only that, you can export the file listing in Control Center to a CSV file so that you can work on them externally.
- ✓ **Import of Folders via Drag and Drop.** In prior versions, drag and drop only allows you to import image files from Windows Explorer but now you can import both image files and folders with it.
- ✓ **Retaining Alphanumerical order for Importing of Non-Zero Padded Filenames.** Zero-padding filenames would allow filenames with numbers to be sorted in the right order but at times, some applications do not zero pad the generated filenames and it can be a pain to keep the right order. Windows itself does not do well with non-zero padded filenames. We took a considerable amount of time to develop the necessary algorithm to keep ensure that zero padded and non zero padded filenames are sorted correctly and now Batch It Ultra would utilize this code when Load Folders and Drag and Drop is being used. You can also sort the list while respecting the numeric sort order using the Control Center Contextual Menu to perform the sort.
- ✓ **Restructuring the Settings Page.** You would no longer need to go through a single long list of settings. We have move the respective settings to their own individual tabs so that you can go to them quicker. And at the same time, all Saving Options are moved to the main screen for easy access.
- ✓ **Option to Add Text Caption, Watermark and Image Effects for the 2nd and 3rd Resizing settings.** Now you have the option to determine if the above-mentioned would

be included for the additional two sizings.

- ✓ **Improved Image Resizing for Downsize and Upsize by Pixels methods.** In the past, oddly sized images with either too long width or height and a much shorter counterpart, the resized images may not fit with the width and height constraints. We implemented a new algorithm in Batch It Ultra v6 to take care of those situations.
- ✓ **Upsizing of images in Resize by Frame to fill the frame.** Prior version of Batch It Ultra would downsize images to fit the frame and just add the images to the middle of the frame as they are, this may mean a very large border. In Batch It Ultra v6, you get an additional option to Upsize to Fit which would allow you to upsize the images so that they more or less fit the dimension of the frame.
- ✓ **Support Output of Grayscale JPEG and JPEG 2000 Images.** In the past, when you set Grayscale for JPEG/JPEG 2000 images, the grayscale filters would be applied but the output file is a true color JPEG/JPEG 2000 images. In Batch It Ultra v6, a true Grayscale JPEG/JPEG 2000 would be generated when you set the JPEG Color Space to Gray Level.
- ✓ **Option to Change the Output Filename via the Filename Format option.** No longer would the output filename be merely one which has a set Prefix, Running Number and Suffix, you can use the Filename Format option to determine how you want the filename to appear has using the various provided macros.
- ✓ **Improved Text Caption Support.** Text are now sharper than before and the drop shadow effect are naturally looking now. Included too is the option to change the Text Caption x and y axis offsets to allow for a finer alignment. Now supports Underline and Strikeout.
- ✓ **Improved Watermark Support.** Improved Watermark support especially for GIF and PNG images with Transparency mask. There is also the added support for Drop Shadow effect for Watermarks. The added option to resize the watermark and the ability to change the watermark x and y axis offsets. You can even resize the watermark from within the watermark settings.
- ✓ **AutoDetect Orientation via EXIF.** Most modern cameras now would tag the image orientation of the images taken in the EXIF header of each photo and Batch It Ultra v6 is able to utilize that setting. Once you set it, all imported images would be evaluated to determine if it needs to be rotated and the Orientation Settings for those images would be automatically set.
- ✓ **Image Manipulation.** Batch It Ultra v6 now has separate options for Sharpen, Sharpen More, Blur and Blur More options.
- ✓ **Sepia Contrast.** Now you have the ability to adjust the intensity of the sepia tone.
- ✓ **Round Corners effect.** The round corner effect now allow you to set round corners for your images.

- ✓ **Tiling Effect.** The Tiling Effect would replicate the same image into several images on the same file using the Tile Columns and Tile Rows option. This will allow you to create multiple coupon sheets or photo stickers.
- ✓ **Contact Sheet.** Batch It Ultra 4 has the option to print photos which we felt could be improved. In Batch It Ultra v6, you now have the ability to print or save a contact sheet which contains thumbnails of all the images on your list. You can determine the number of columns and rows per page.
- ✓ **Improved Error Checking.** We now include additional error checks to ensure that the image which are being processed are not damaged and would skip erroneous images without crashing.
- ✓ **XML Style Settings Profile File.** The prior version of Batch It Ultra uses an INI style Settings Profile which does not do a good job supporting Unicode text as such we decided to move to a XML style Settings Profile which can handle more complex settings information. The XML file is still text-readable.
- ✓ **ICC Profile Support.** To support more accurate color calibration, embedded ICC Profiles are now supported.
- ✓ **Resizing By Pixels.** This newly added Resizing Method will downsize all images which are larger than the set dimensions and upsize those that are smaller.
- ✓ **Text Caption.** In Batch It Ultra v6, Diagonal Text Caption Alignment option is added as well as the ability to set Text Caption Transparency.

Version History

v5.00	<ul style="list-style-type: none"> • Initial Release
v5.01	<ul style="list-style-type: none"> • Fixed Bug which causes the error “‘0/0/0 0:0:0:0’ is not a valid date and time” when the EXIF header does not contain a date entry. • Reduce PDF Manual File Size
v5.02	<ul style="list-style-type: none"> • Command Line - Fixed Bug which causes the Recursive command to be skipped • Command Line - Speed Bump when the Recursive is included in the command line • Command Line - Update Total Files after images have been loaded • Command Line - Reactivate the File Listing after images have been loaded • Command Line - Fixed Bug which does not include sub folders when the main folder does not contain any images • Documentation - Added Missing Documentations on Command Line Parameters • Settings Profile File - Removed Redundant tags in the XML File
v5.03	<ul style="list-style-type: none"> • Rewrite Resize By Frame method
v5.04	<ul style="list-style-type: none"> • Fixed Bug which affects a small number of GIF images when converting to JPEG or PNG.
v5.05	<ul style="list-style-type: none"> • Fixed Bug which causes some checkbox settings not to be saved correctly.
v5.06	<ul style="list-style-type: none"> • Fixed Bug which causes the 2nd Resizing resultant image not to be saved.
v5.07	<ul style="list-style-type: none"> • Fixed Bug where Profile is not loaded when used in Command Line mode.
v5.08	<ul style="list-style-type: none"> • Fixed Bug which causes the original file to be deleted after the main processing is done in command line mode when the DeleteOriginal parameter is used.
v5.09	<ul style="list-style-type: none"> • Updated Imaging Engine
v5.10	<ul style="list-style-type: none"> • Updated Imaging Engine • Fixed Bug which causes the Clear button to disable when loading files via command line • Resized Watermark to match the dimensions of the images if the watermark file is larger • Added Enable Buttons under the Help and File Listing Context Menu for situations when the buttons are not enabled typically after the unlikely incident of a crash • Fixed Bug which causes part of the application frame on the right side to disappear
v5.11	<ul style="list-style-type: none"> • Updated Imaging Engine • Change Open Dialog to Standard Dialog • Code Optimisation
v5.12	<ul style="list-style-type: none"> • Added Support for Image Filename Format to allow for filename format which doesn't include the [Number], [OrgFilename] or [OrgFilenameNoExt] but includes the [NN][SS] macros.
v5.14	<ul style="list-style-type: none"> • Updated Imaging Engine • Improved Memory Management
v5.15	<ul style="list-style-type: none"> • Reworked memory management module which might cause possible application crashes
v5.16	<ul style="list-style-type: none"> • Fixed Bug in the Watermark Option which causes the watermark to replaced the original image

v5.17	<ul style="list-style-type: none"> • Fixed Bug which caused the application to crash if the Resizing Method is set to Resize By Frame and either the Frame Width or Height is set to 0 • Fixed Bug which caused the frame dimension not to be used when Resize by Frame is used
v5.18	<ul style="list-style-type: none"> • Fixed Bug with the “By Cropping” method where the cropped height and width doesn’t match that of the selection • Fixed Bug which causes the Resizing Method to switch to “By Frame” when cropping dimension is selected
v5.19	<ul style="list-style-type: none"> • Updated Interface • Internal Code Optimization
v5.20	<ul style="list-style-type: none"> • Fixed Bug which causes the toolbar button to be covered by the panels under certain conditions.
v5.21	<ul style="list-style-type: none"> • Support Send To function in Windows Contextual Menu
v5.22	<ul style="list-style-type: none"> • Correct the behavior of the filename changer
v5.23	<ul style="list-style-type: none"> • Update the Theming Engine
v5.24	<ul style="list-style-type: none"> • Added New Text Captions Macros [GPSCoord] [GPSLatDeg] [GPSLongDeg] [FNumber] [FocalLength] [ExposureProgram] [ExposureTime] [UserComment] [XPComment] [Comment]
v5.25	<ul style="list-style-type: none"> • Updated Memory Manager
v5.26	<ul style="list-style-type: none"> • Updated Code Signing Certificate
v5.27	<ul style="list-style-type: none"> • Added Resizing By Pixels method in Resizing Methods • Added Popup Option to select file type to search using the Load Folder button
v5.28	<ul style="list-style-type: none"> • Added Missing PNG Option in the Load Folder popup
v5.29	<ul style="list-style-type: none"> • Internal Code Optimization
v5.30	<ul style="list-style-type: none"> • Fixed Issue with PNG transparency
v5.31	<ul style="list-style-type: none"> • Improved Icon Management
v5.32	<ul style="list-style-type: none"> • Fixed bug which causes the application to crash when encountered faulty image file
v5.33	<ul style="list-style-type: none"> • Fixed memory leak when using the file dialog
v5.40	<ul style="list-style-type: none"> • Major Update of the Imaging Engine
v5.41	<ul style="list-style-type: none"> • Removed Debug message in the file renaming routine • Added Support to perform File Renaming on All types of Files

v5.42	<ul style="list-style-type: none"> • Improve Performance for Image Preview • Switch Preview Photos from a Double Click to a Single Click • Supports using arrow keys within the File Listing to Preview Photos • Improved Imaging Engine
v5.43	<ul style="list-style-type: none"> • Fixed bug created in v5.42 which causes the images to be downsized to 1/8th the original dimensions
v5.44	<ul style="list-style-type: none"> • Fixed bug which causes the PNG file not to save when the PNG Quality is set to above 85%
v5.45	<ul style="list-style-type: none"> • Fixed bug which causes the Command Line in the Server, Command Line and Trial version to ignore the “recursive” and “autostart”
v5.46	<ul style="list-style-type: none"> • Internal Updates
v5.47	<ul style="list-style-type: none"> • Updated Imaging Engine
v5.48	<ul style="list-style-type: none"> • Fixed an issue caused by the latest Windows Update which prevented the app from launching.
v5.49	<ul style="list-style-type: none"> • Fixed a rare bug which causes the app to crash with a Division By Zero error when the compression rate of a JPEG image cannot be determined
v5.50	<ul style="list-style-type: none"> • Fixed a bug which causes the app to only show up partially when resizing the app
v5.51	<ul style="list-style-type: none"> • Improved Performance for loading of files to the file listing
v5.52	<ul style="list-style-type: none"> • Migrated to a new compiler • Reworked the Template And Registry Module
v5.53	<ul style="list-style-type: none"> • Added Support for 48 Bits TIFF • Fixed an issue where the Drop Menu does not load up the last saved settings
v5.54	<ul style="list-style-type: none"> • Internal Fixes
v5.55	<ul style="list-style-type: none"> • Fixed issue when Image Format is set to 'As Is' , Color Depth to '48 Bits' and the image format is TIFF gets reverted to 24 Bits • Fixed Save In Directory not saving to Registry and Settings Profile File
v5.56	<ul style="list-style-type: none"> • Fixed issue when Image Format is set to “TIFF” and Color Depth to “48 Bits”, the TIFF image gets reverted to 24 Bits
v5.57	<ul style="list-style-type: none"> • Speed up Image Processing • When Enable Change Preview is unchecked, the image preview will show a preview which is 1/8th the original size to speed up preview • Support using the Mouse Up and Down to navigate between the images within the File Listing • Fixed issue where the Before Image Preview is not centralized.
v5.58	<ul style="list-style-type: none"> • Improved JPEG Preview
v5.59	<ul style="list-style-type: none"> • Fixed a bug which causes the Second and Third Resizing by Percentage to follow the first

v5.60	<ul style="list-style-type: none"> • Updated User Interface
v5.61	<ul style="list-style-type: none"> • Internal Updates
v5.62	<ul style="list-style-type: none"> • Now the Toolbar buttons are all visible while in the past the buttons are hidden until they are needed. However the buttons which are not needed would not function such as Clearing the List when the Image Processing is still underway.
v5.63	<ul style="list-style-type: none"> • Added Dimension Column in the File Listing which shows the Width x Height dimension in pixels
v5.64	<ul style="list-style-type: none"> • Fixed issue where Change Preview works when “Do Filename Change Only” and “Enable Change Preview” are both selected • Fixed bug which attempts to preview non-supported file format
v5.65	<ul style="list-style-type: none"> • Fixed issue where images are dragged and dropped and the files could not be found when previewing or processing • Added Thumbnail in the File Listing
v5.66	<ul style="list-style-type: none"> • Fixed Custom Font Size settings reverting back to Font Size 14 upon reload • Added more Font Size options
v5.70	<ul style="list-style-type: none"> • Implement the Dark Theme for the App • Fixed Preview Window Popup Menu • Fixed Text Caption not appearing when the Caption Color is set to White
v5.71	<ul style="list-style-type: none"> • Fixed a bug which causes the File Listing to freeze when the Pop-up menu option “Set Orientation to” is selected
v5.72	<ul style="list-style-type: none"> • Reworked Resizing by Cropping Method
v5.73	<ul style="list-style-type: none"> • Fixed bug which causes the popup menu cropping to show wrong coordinates when Enable Change Preview is unchecked
v5.74	<ul style="list-style-type: none"> • Fixed bug which caused a crash upon exiting in the 32 Bit Version • Added Support for Diagonal Text Caption Alignment Option • Added Text Transparency for Text Caption
v5.75	<ul style="list-style-type: none"> • Internal Updates
v5.76	<ul style="list-style-type: none"> • Updated Theme
v5.77	<ul style="list-style-type: none"> • Internal Updates
v5.78	<ul style="list-style-type: none"> • Fixed Thumbnails not showing up • Applied the darker theme to the status bar
v5.79	<ul style="list-style-type: none"> • Increased UI Font Size by 2 pixels
v5.80	<ul style="list-style-type: none"> • Bring Title Bar back which went missing in v5.79

v5.81	<ul style="list-style-type: none"> • Updated UI • Internal Code Updates
v5.82	<ul style="list-style-type: none"> • Updated Compiler • Internal Code Optimization
v5.83	<ul style="list-style-type: none"> • Reworked the File Listing module to prevent a possible crash when loading up large list. The thumbnails would now be loaded only for the rows in view.
v5.84	<ul style="list-style-type: none"> • Added further refinement to the thumbnail modules
v5.85	<ul style="list-style-type: none"> • Added Import Support for Adobe RAW (DNG), Canon RAW (CR2), FujiFilm RAW (RAF), Nikon RAW (NEF), Olympus RAW (ORF), Panasonic RAW (RW2) and Pentax RAW (PEF) • Added Export Support for TARGA • Fixed possible Access Violation when navigating while processing the images
v5.86	<ul style="list-style-type: none"> • Improvement to the thumbnail module
v5.87	<ul style="list-style-type: none"> • Updated all links to our website to https
v5.88	<ul style="list-style-type: none"> • Fixed issue where the Menu bar gets overlapped by the Icon Bar • Added "Check for Updates" under Help Menu Bar
v5.89	<ul style="list-style-type: none"> • Internal Fixes
v5.90	<ul style="list-style-type: none"> • Fixed UI issues
v5.91	<ul style="list-style-type: none"> • Fixed the flickering when resizing the app
v6.00	<ul style="list-style-type: none"> • Updated the Grid framework • Updated the UI
v6.01	<ul style="list-style-type: none"> • Fixed Text Alignment on Buttons • Improve File Loading Speed • Orientation Degree showing up as a different character • Crash when loading non-existent file • Crash when the Preview is activated but not completed before the list is cleared • Drag and Drop not working • Update theme to fix an issue where the File Paths shows wrong details when loading huge list
v6.02	<ul style="list-style-type: none"> • Reworked the Load Files Dialog to use the newer API which can support more than a thousand files
v6.03	<ul style="list-style-type: none"> • Isolated and Fixed the memory leak and we are reinstating the theme
v6.04	<ul style="list-style-type: none"> • Change the way "Enable Change Preview" works. Now when the option is unchecked, the File Listing Thumbnails are also suppressed. • Change the way "Show Processed Images After Processing". Now when this option is unchecked, the "Before Preview" would no longer show up

v6.05	<ul style="list-style-type: none"> • Updated the Imaging Engine • Faster Loading of Photos • Fixed Before Preview reporting the wrong dimensions for RAW images • Fixed the entire File List being deleted when the last file on the list is deleted • Fixed Images over-exposed under 32 Bit version
v6.06	<ul style="list-style-type: none"> • Added new DPI Options
v6.07	<ul style="list-style-type: none"> • Fixed First Text Caption not editable
v6.08	<ul style="list-style-type: none"> • Updated the Underlying Framework
v6.09	<ul style="list-style-type: none"> • Improved UI Performance
v6.10	<ul style="list-style-type: none"> • Updated Imaging Engine • Fixed intermittent crash when processing images
v6.11	<ul style="list-style-type: none"> • Updated Imaging Engine • Added Import Support for Canon RAW (CR3)
v6.12	<ul style="list-style-type: none"> • Updated Imaging Engine • Minor UI Updates • Fixed Trial Version of the 32 Bit Version not running
v6.15	<ul style="list-style-type: none"> • Updated Imaging Engine
v6.16	<ul style="list-style-type: none"> • Updated Imaging Engine • Update UI
v6.17	<ul style="list-style-type: none"> • Updated Imaging Engine • Improved Performance
v6.18	<ul style="list-style-type: none"> • Updated Imaging Engine
v6.19	<ul style="list-style-type: none"> • Updated UI • Updated Imaging Engine
v6.20	<ul style="list-style-type: none"> • Updated UI
v6.21	<ul style="list-style-type: none"> • Updated UI • Updated Underlying Framework
v6.22	<ul style="list-style-type: none"> • Updated Underlying Framework • Minor UI Update
v6.23	<ul style="list-style-type: none"> • Updated Underlying Framework
v6.24	<ul style="list-style-type: none"> • Updated Underlying Framework

v6.25	<ul style="list-style-type: none"> • Updated Underlying Framework
v6.26	<ul style="list-style-type: none"> • Updated Underlying Framework
v6.27	<ul style="list-style-type: none"> • Updated Underlying Framework • Minor UI Update
v6.28	<ul style="list-style-type: none"> • Improved Memory Management
v6.29	<ul style="list-style-type: none"> • Internal Code Optimization
v6.30	<ul style="list-style-type: none"> • Internal Code Optimization
v6.31	<ul style="list-style-type: none"> • Internal Code Optimization
v6.32	<ul style="list-style-type: none"> • Updated the Settings and File Listing to Light Mode • Internal Code Optimization
v6.33	<ul style="list-style-type: none"> • Updated UI • Internal Code Optimization
v6.34	<ul style="list-style-type: none"> • Updated UI • Internal Code Optimization
v6.35	<ul style="list-style-type: none"> • Updated UI • Internal Code Optimization
v6.36	<ul style="list-style-type: none"> • Updated UI • Internal Code Optimization
v6.37	<ul style="list-style-type: none"> • Fixed a bug which cause the image to dim when a text caption is added to it.
v6.38	<ul style="list-style-type: none"> • Internal Code Optimization
v6.39	<ul style="list-style-type: none"> • Reworked the EXIF Module
v6.40	<ul style="list-style-type: none"> • Internal Code Optimization
v6.41	<ul style="list-style-type: none"> • Reworked the theme
v6.42	<ul style="list-style-type: none"> • Added Option to Switch between Light and Dark Mode

v6.43	<ul style="list-style-type: none"> • Fixed Load Folder in Filename Changer only mode showing filename with folder which should have just been filename • Fixed Several Settings not being saved in registry • Fixed Replace Files not being replaced in the Filename Changer Only mode when Overwrite Files option is checked • Fixed new theme causing drag and drop to fail • Added Reset Number At Each Sub Folder • Added Option to use Subfolder Name as part of the Filename
v6.45	<ul style="list-style-type: none"> • Fixed Crash while performing Clear List after an Image Preview • Replaced Theming Engine • Switch to Light Theme • Internal Code Optimization
v6.46	<ul style="list-style-type: none"> - Fixed UI Issues - Internal Code Optimisation
v6.47	<ul style="list-style-type: none"> - Reworked the Check for Updates module
v6.48	<ul style="list-style-type: none"> • Internal Code Optimization • Internal Fixes
v6.49	<ul style="list-style-type: none"> • Fixed bug which causes the new filename to be increased by 1 • Fixed crash when processing last photos on the list • Fixed Downsize by Pixel not changing the Height when Height is set to 0
v6.50	<ul style="list-style-type: none"> • UI Fixes

Pricing and Licensing

Trial Version

Batch It Ultra v6 comes with a Try-Before-You-Buy option which allows you to try Batch It Ultra v6 for free for a period of 14 days without obligation to determine if this application meet your needs and that the application works for you.

Although we test the application on various configuration to determine its compatibility with all currently used Windows Operating System, the application may not work under certain circumstances such as incompatibility with certain hardware or software. As such, we urge you to try the application before purchasing the license.

The Free 14 Days Free Trial is a full featured application which offers you to evaluate the application in both the GUI and Command Line mode. The only difference is the nag screen which would appear at the application start and when you exit from the application. The application will stop working 14 days after the application was first executed.

To continue using the application beyond the 14 days or for non-evaluation purposes, you would be required to purchase a license from our website at <https://www.batchimage.com/registration> . Once the license key is applied, the nag screens would no longer appear and you can use the application beyond the 14 days.

License Type

Batch It Ultra v6 comes in 3 editions, GUI Version, Command Line and Server Licenses.

GUI Version

The GUI Version would run as a standard application which would allow you to use the application just like any application. You would be able to use all features of the application without restriction. This version would meet the needs of most users.

This version does not support command line parameters or run in the command line mode.

A License is required per named user. You may install the application on up to 3 computers provided that you are the exclusive user and that the application is not running concurrently on the 3 computers at a single time.

You will be required to purchase additional licenses for each named user. To use the application in the GUI mode, you would need a license per user and use it locally and not over a local area network.

Command Line Version

The Command Line version can operate as the GUI Version as well as a Command Line application. As a Command Line, it will accept Command Line Parameters. You would be able to automate the image processing by attaching it to a batch file, Microsoft Task Scheduler or as an additional of another application.

The Command Line version would be appropriate for a single user to automate the image processing feature of Batch It Ultra.

A License is required per user computer it is installed and run on. You may run multiple threads of the application in the command line mode in a localized computer environment.

Server Version

Like the Command Line version, the Server Version can operate in both GUI and Command Line mode. This allow you to install the application on a server provided the server application is the exclusive user of the application. This could provide imaging processing capability to a Local Area Network/Corporate wide environment or a web server.

Pricing

The following are standard retail pricing for a single copy. We do offer volume discount for all editions of the application and this are reflected on the Order form. All orders are processed externally by FastSpring.

Once the order has been processed and approved by FastSpring, you will receive an email containing the license key. This License key can be used for both the 32 Bit and 64 Bit version of the application. Please do not distribute the license key.

Batch It Ultra v6 GUI Version (32 / 64 Bit) **US\$19.95**

<https://sites.fastspring.com/batchimage/product/batchitultra5guiversion>

Batch It Ultra v6 Command Line Version (32 / 64 Bit) **US\$69.95**

<https://sites.fastspring.com/batchimage/product/batchitultra5commandlineversion>

Batch It Ultra v6 Server Version (32 / 64 Bit) **US\$299.99**

<https://sites.fastspring.com/batchimage/product/batchitultra5serverversion>

Registration Benefits

As a registered user, you are entitled to

- ✓ **All minor updates and bug fixes between v5.0 to v6.99.** From time to time, we will enhance the application to support registered user requested features and reported bugs.

- ✓ **Technical support via email.** To keep our cost and subsequently pricing low, we offer unlimited technical support via email to all our customers. All queries would be answered within 2 to 48 hours.
- ✓ **Feature request.** We believe in your inputs as we strive to build the application to meet your needs and your suggestions are valuable to us as it would shape the future of the application. We do not charge for feature request as long as they do not require a drastic rewrite of the application, something which we can do in-house and does not require us to purchase additional licenses for.
- ✓ **Heavily discounted major upgrades.** Although we like to maintain the current version for an indefinite time, we may be required to completely rewrite the application to support new operating system, features and most of all, keeping this application relevant. In this instance, the upgrade to the new version is not free but we do offer heavily discounted prices for all our valued customers. This will allow us to pay for any additional licenses in order to make this the best and greatest application.

Purchasing a license would allow us to fund future development for the application and it is certainly the right thing to do if you find this application useful and save you time and money to do your work and improve the quality of your life.

Updates

From time to time, we will issue updates to the application which may include new features, bug fixes or support for new Windows version.

Traditionally, you can visit our website at <https://www.batchimage.com/downloads> and download the latest version and install it over your current copy. All settings and registration details would not be affected.

New in v5.88 is the option to check for updates directly from the application. You can find the "Check for Updates" under Help. If there is a new update, it will offer you the option to download the latest version. If you are using the 64 Bit version, the 64 Bit download links would be displayed and for the 32 Bit versions would show 32 Bit download links.

Batch It Ultra v5 license key would work with Batch It Ultra v6.

Contact Information

We value your comments, suggestions and bug reports as that would enable us to enhance and improve Batch It Ultra. Our goal is to develop applications which are both useful and relevant to you by simplify your task.

For all technical support, please contact us at support@batchimage.com .

For all sales support, please contact us at sales@batchimage.com .

As we do offer several applications for sales on both the Windows and Mac platform, to allow us to assist you, please do provide as much information as possible and do include the application name and version.

Supported Image Formats

Supported Import File Formats

✓ JPEG (.jpg, .jpeg, .jpe)	✓ PNG (.png)	✓ Single Page TIFF (.tif, .tiff)
✓ JPEG 2000 (.j2k, .jp2)	✓ Windows Bitmap (.bmp)	✓ Windows HD Photo (.hdp)
✓ ZSoft PCX (.pcx)	✓ GIF (.gif)	✓ Targa (.tga, .vda, .icb)
✓ DIB (.dib, .rle, .pix)	✓ Truevision (.vst)	✓ Portable Bitmap (.pbm)
✓ Windows Metafile (.wmf)	✓ GFI Fax (.fax)	✓ Adobe Photoshop (.psd)
✓ Paint Shop Pro (.psp)	✓ Dr Halo Cut (.cut)	✓ Kodak PhotoCD (.pcd)
✓ Adobe RAW (.dng)	✓ Canon RAW (.cr2)	✓ Canon RAW (.cr3)
✓ Nikon RAW (.nef)	✓ Olympus RAW (.orf)	✓ Panasonic RAW (.rw2)
✓ Fujifilm RAW (.raf)	✓ Pentax RAW (.pef)	

Supported Export File Formats

✓ JPEG (.jpg, .jpeg, .jpe)	✓ PNG (.png)	✓ Single Page TIFF (.tif, .tiff)
✓ JPEG 2000 (.j2k, .jp2)	✓ Windows Bitmap (.bmp)	✓ Windows HD Photo (.hdp)
✓ ZSoft PCX (.pcx)	✓ GIF (.gif)	✓ Portable Gray Map (.pgm)
✓ Portable Bit Map (.pbm)	✓ Portable Pixel Map (.ppm)	✓ Targa (.tga)

CSV and Text File Format

Batch It Ultra v6 supports importing and exporting of Comma Separated Values (CSV) files and Text (TXT) files. The CSV file format can be generated or edited on any major Spreadsheet or Text Editor including Microsoft Excel, Word, Notepad, Wordpad and Open Office. You should be able to import and export the CSV using your favorite spreadsheet application.

This is one of the highly requested feature as you can enter the text caption from a spreadsheet or a text editor.

The supported formats are as follows

- ➡ **Original Filename**
- ➡ **Original Filename, New Filename**
- ➡ **Original Filename, Caption**
- ➡ **Original Filename, New Filename, Caption**

Each entry must be terminated by a carriage return.

The **Original Filename** is the original filename of the image file with its file extension, this can include full qualifying filename which includes the file path and filename (such as f:\original photos\picture 01.jpg) or just the filename. If the original filename does not include the file path, it will assume the images shares the same path as the CSV or TXT file. Batch It Ultra would verify the existence of the files before importing them into the application.

The **New Filename** would be the new filename which you want to rename the image file to. This does not require the file path as Batch It Ultra would export the images to the Save Images to folder. If you want to retain the new filename, ensure that the Enable Filename Changer is unchecked otherwise it would be renamed based on the Filename Changer Settings. Although you would need to supply the file extension, it may be change to reflect the output image format.

The **Caption** would be the text caption which would be used to embed into the images. You can include the supported text caption macros.

To load a CSV File, use the Load Files button and to export the File Listing in Control Center, by bringing up the Contextual Menu by right-mouse clicking on the File Listing and select Export List where you would be prompted for a filename. The exported CSV file can be read into your spreadsheet or text editor.

All saved CSV file would include full qualifying file path and filename, new filename and caption (if they exist).

Settings Profile Files

In order to provide you with as much control over how the output images would look, Batch It Ultra comes with over 280 settings. This can be quite taunting to have to set it up every single time you want to use the application. Although the application will remember the last used settings, that is not enough especially when you want to use the application to handle images with different settings for different jobs or clients and so that is where the Settings Profile Files come into play.

The Settings Profile Files are XML-based files which contains all the settings that is used in Batch It Ultra v6 and nothing else. The XML format was chosen because they are text-readable so you can view or edit them on a XML or text editor. It is also an intelligent format which can handle a wide variety of settings.

Since the Settings Profile Files do not contain the file listings or computer specific information, it is truly portable and the saved Settings Profile Files can be loaded unto another computer which has Batch It Ultra v6 installed.

Use the Load Settings Profile to load a previously saved Settings Profile File and the Save Settings Profile to save the current settings to a Settings Profile File.

It is also being used exclusively in the command line mode as parameters as to how the image processing would proceed and where the output files would be saved in.

When you encounter an issue with Batch It Ultra and contact us for support, we may request for the Settings Profile File so that we can recreate the settings you used on our computer and be able to advise you on the correct settings to use or be able to issue a bug fix.

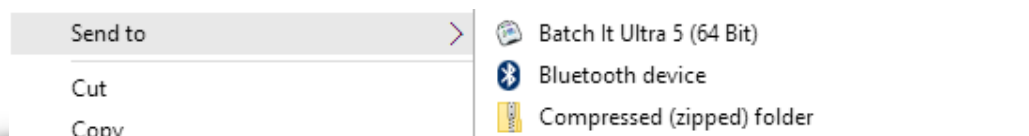
Batch It Ultra v6 uses a XML formatted Settings Profile Files while Batch It Ultra v4 uses an INI based Settings Profile Files and are not compatible with each other. There are also quite a number of changes in the settings and porting is currently not available. You would have to manually recreate the settings.

Basic Tips

Loading Images to the List

There are six ways to load the images to the file listing.

- ➡ **Load Files** - Use this method to select one or more files from a single folder.
- ➡ **Load Folders** - This method will allow you to select a folder of images and the option to include all the sub folders.
- ➡ **Load CSV or TXT File** - Use the Load Files option to select the .csv or .txt file which contains the file lists. This list can include additional information such as the new filename and text caption.
- ➡ **Drag and Drop** - This method allows you to drag in a list of filenames from the Windows Explorer or any file listing.
- ➡ **Command Line Parameter** - This method works in the Command Line and Server edition where you can tag on the full qualifying filename of the images you want to add to the list.
- ➡ **Send To in Windows Contextual Menu** - Now anywhere in Windows, you can right mouse click on any supported image file, select Send To -> Batch It Ultra and those files will be added to File Listing. This will only work when Batch It Ultra is NOT already launched.



Minimum Settings Needed

In order to successfully perform either a batch image processing or batch filename change, you will need to ensure the following things.

- ✓ Ensure that you include at one file in the file listing.
- ✓ Ensure that the Save Images In contains a folder where the processed images would be saved in.

Upsizing Images

Batch It Ultra offers you the ability to both downsize and upsize your images. Upsizing can be tricky as details within the picture cannot be added in by Batch It Ultra, all it does is to replicate neighboring pixels so they are larger. If the upsizing is set to above twice the size of the original photo, the degraded image quality would be visible.

Contact Sheet

- ➡ Use the Contact Sheet button on the Icon Bar to generate a contact sheet of the original images in their original untouched form.
- ➡ Use the Contact Sheet settings to generate a contact sheet of the processed images.

Text Captioning

Currently, Batch It Ultra allows a single line of text caption and if the text caption is long or the font size is too big, part of the text caption may go off screen. Do experiment to ensure that the text fits.

If you require multiple lines of text captions, you can take advantage of the 3 text caption options. What you could do is to set the Text Y Axis Offset (of the 2nd and 3rd Text Caption) to the Font Size with a little allowance so that they do not overlap each other.



In the above example, the following settings are used

	First Text Caption	Second Text Caption	Third Text Caption
Text Alignment	Top Middle	Top Middle	Top Middle
Text Y Axis Offset	0	50	100
Font Size	48	48	48

Application Description

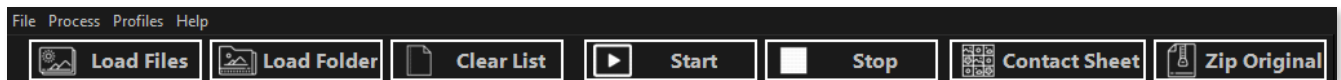
When you run Batch It Ultra v6, you will see a similar screen as above. This is the Main Window where you would be doing most of the batch image processing task.

There are 5 core components which makes up the application. On the top, you will see the Control Toolbar which contains the buttons to Load, Process and Save the Settings Profile file and other miscellaneous functions. Below it on the left is the Control Center which contains the file listing and the Settings tab where you will be able to make changes to how you want the images to be processed. On its right is the Preview Windows which contains the Before and After images. Below the Control Center is the Saving Options. Before that the Status window which shows you want is being done.

General Overview of the Interface

Next, we will look at the main components of the application which includes the Control Toolbar, Control Center, Settings and Preview Windows.

Control Toolbar



There are two parts of the control toolbar, on the left are specifically related to the image processing task and on the right are controls which you will find on the Main Menu.

- ➔ **Load Files** - This option allows you to select one or more images from a folder to be included into the Control Center. Apart from selecting supported images, you can use this option to load a CSV or Text file containing a text-readable file containing filenames, new filenames and captions.
- ➔ **Load Folders** - This option would provide the option to import from a single folder with the option to include sub folders. When you press the button, you will be prompted with a list of the supported image formats, select the format you want to include in the search. The files would be imported starting from the main folder followed by the sub folders.

Note : When the “Do Filename Change Only” checkbox is checked prior to using Load Files or Load Folders, it will allow All files types to be loaded to the list. This is to enable the Filename Changer mode which lets you change all types of filenames.

If you want to only rename supported Image Files, uncheck the “Do Filename Change Only” prior to using the Load Files or Load Folders.

- ➡ **Clear List** - This option would clear the file listings and the images in the Before and After Preview windows (if applicable).
- ➡ **Start** - This option would begin the batch image processing or batch file renaming process.
- ➡ **Stop** - This option would only be enabled when the batch image processing begins. It will stop the image processing after the current image has been processed.
- ➡ **Contact Sheet** - This option would provide you the option of saving the Contact Sheet into an image file or to the printer.
- ➡ **Zip Originals** - This option would allow you to save the files in the file listing into a zip file. If you set Batch It Ultra to overwrite the original files, it is a good idea to save a copy of the original image files until you are satisfied with the output as the files which are replaced cannot be recovered. Saving a copy of the original files would ensure that your hard work is not lost.
- ➡ **Load Settings Profile** - This option will allow you to load the XML-based Settings Profile file and update the current settings to it. This is under Profiles.
- ➡ **Save Settings Profile** - This option will let you save the current settings in the application to a XML-based Settings Profile file. This is under Profiles.
- ➡ **Help** - This will bring up this PDF manual. Right-Mouse Click on this button would allow you to Reset the application layout.
- ➡ **About** - This will bring up the About Window.
- ➡ **Exit** - This will save the current settings and allow you to exit from the application.

Control Center

Control Center		Settings				
	Filename	New Filename	Orientation	Caption	Dimension (W x H)	File Path
	DSCF0984.JPG	DSCF0984.JPG	As Is	[UseSettings]	4288 x 3216	Z:\Photos Take
	DSCF0985.JPG	DSCF0985.JPG	As Is	[UseSettings]	4288 x 3216	Z:\Photos Take
	DSCF0986.JPG	DSCF0986.JPG	As Is	[UseSettings]	4288 x 3216	Z:\Photos Take
	DSCF0987.JPG	DSCF0987.JPG	As Is	[UseSettings]	4288 x 3216	Z:\Photos Take
	DSCF0988.JPG	DSCF0988.JPG	As Is	[UseSettings]	4288 x 3216	Z:\Photos Take
	DSCF0989.JPG	DSCF0989.JPG	As Is	[UseSettings]	4288 x 3216	Z:\Photos Take
	DSCF0990.JPG	DSCF0990.JPG	As Is	[UseSettings]	4288 x 3216	Z:\Photos Take
	DSCF0991.JPG	DSCF0991.JPG	As Is	[UseSettings]	4288 x 3216	Z:\Photos Take
	DSCF0992.JPG	DSCF0992.JPG	As Is	[UseSettings]	4288 x 3216	Z:\Photos Take
	DSCF0993.JPG	DSCF0993.JPG	As Is	[UseSettings]	4288 x 3216	Z:\Photos Take
	DSCF0994.JPG	DSCF0994.JPG	As Is	[UseSettings]	4288 x 3216	Z:\Photos Take
	DSCF0995.JPG	DSCF0995.JPG	As Is	[UseSettings]	4288 x 3216	Z:\Photos Take

The Control Center contains the File Listing which comes with 5 columns, Filename, New Filename, Orientation, Caption and File Path. The New Filename, Orientation and Caption columns are editable.

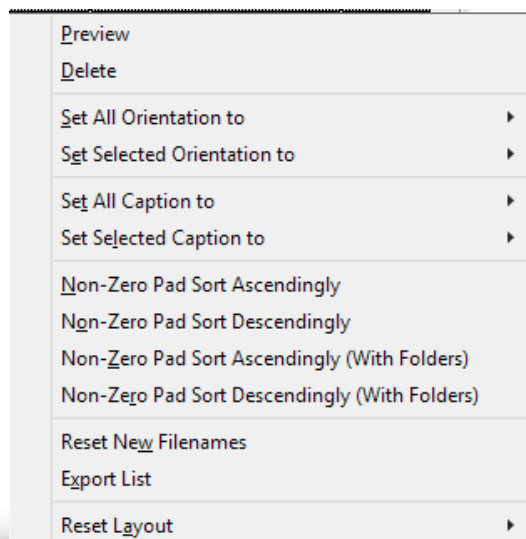
- ➔ **Filename** - This column reflects the original filename of the image file. If you double-click on the filename, you will be able to preview the image in the Before Preview Window. If the Enable Change Preview checkbox is checked, you will also be able to preview the changes made to the image with the current settings and also preview the new filename in the New Filename column.
- ➔ **New Filename** - By default, this will show up the same filename as the Filename column and only changes to the filename would be made during the image processing procedure. This column is editable. If you want to change the filename to reflect a unique filename, you can do so here and uncheck the Enable Filename Changer so that it will use the filename which you entered instead.
- ➔ **Orientation** - You can either manually edit the Orientation of the image through the Orientation Dropdown menu or if you are importing JPEG images taken from a digital camera, you can check the AutoDetect Orientation via EXIF and have Batch It Ultra select the appropriate orientation for you based on what your camera records.

- ➡ **Dimension (W x H)** - This is the dimensions of the photo's Width and Height in Pixels
- ➡ **Caption** - This will reflect the text caption which would be used based on the 1st Text Caption Settings. If [UseSettings] is selected, it will use the text caption reflected in the 1st Text Caption option. You will have to set the 2nd and 3rd Text Caption settings from their respective settings tab. You can mix and match static text with the supported macros. More information on the macros can be found in the Text Captions chapter of this manual.
- ➡ **File Path** - This reflects the original file path of the original image file. This column is not editable.

You can sort all columns in the ascending or descending order by clicking on the respective column header. Sorting by this method uses a simple sorting mechanism which does not take into respect non-zero padded numbers in the filename. This method works if all your filenames do not have numbers or uses zero-padded numbers. We do provide the option to sort the list so that you get the correct order regardless of whether the numbers are zero padded or not

Original List	Header Sort	Contextual Menu Sort
6	1	1
3	10	2
1	2	3
10	3	5
2	5	6
5	6	10

When you do a right-mouse click on the File Listing in Control Center, you will see a contextual menu such as the one below.



Some of the options are selectable only if one or more files are selected with the exception of Reset Layout.

- ➡ **Preview** - This is similar to click on a filename. This option is enabled when a filename is selected. If multiple files are selected, only first selected image would be previewed.
- ➡ **Delete** - This allow you to delete one or more files on the list. You will need to select at least one or more files from the list.
- ➡ **Set All Orientation To** - This option allows you to change all the orientation settings on the list to one of the available orientation options. Setting it to EXIF Orientation would cause all images to be re-evaluated for its orientation via its EXIF header settings. This option would be enabled when the file listing contains one or more files.
- ➡ **Set Selected Orientation To** - Similar to the Set All Orientation To, this option will only change the orientation of the selected files. This will work when one or more files are selected.
- ➡ **Set All Caption To** - This allows you to set all text captions on the list to one of the preset macros.
- ➡ **Set Selected Caption To** - This works like the Set All Caption To but it only change the caption column of the selected files on the list.
- ➡ **Non-Zero Pad Sort Ascendingly** - This option would utilize our sorting algorithm which would ensure that filenames which contains numbers which are not zero padded to be treated like zero padded files and sort the files in an ascending order. This option would ignore the File Path and treat all files as if they are from a single folder.
- ➡ **Non-Zero Pad Sort Descendingly** - This option is similar to the Non-Zero Pad Sort Ascendingly but sorts the list in the descending order.
- ➡ **Non-Zero Pad Sort Ascendingly (With Folders)** - This works like the Non-Zero Pad Ascendingly option but this option would first sort the list by folders and within that list, it would sort the files from that folder in the ascending order.
- ➡ **Non-Zero Pad Sort Descendingly (With Folders)** - This works like the Non-Zero Pad Descendingly option but this option would first sort the list by folders and within that list, it would sort the files from that folder in the descending order.
- ➡ **Export List** - This option will prompt you for a file name to save the current file listing in a CSV format. This will include the Original Filename with File Path, New Filename and Caption details.
- ➡ **Reset New Filenames** - This will revert all the filenames in the New Filename column to that of the Filename column.

- ➡ **Reset Layout** - This will reset the layout of the application to its default state. This is similar to selecting the Reset Layout when you bring up the contextual menu from the Help button. There are currently two Layout Options, Preview Top Bottom and Preview Side By Side.

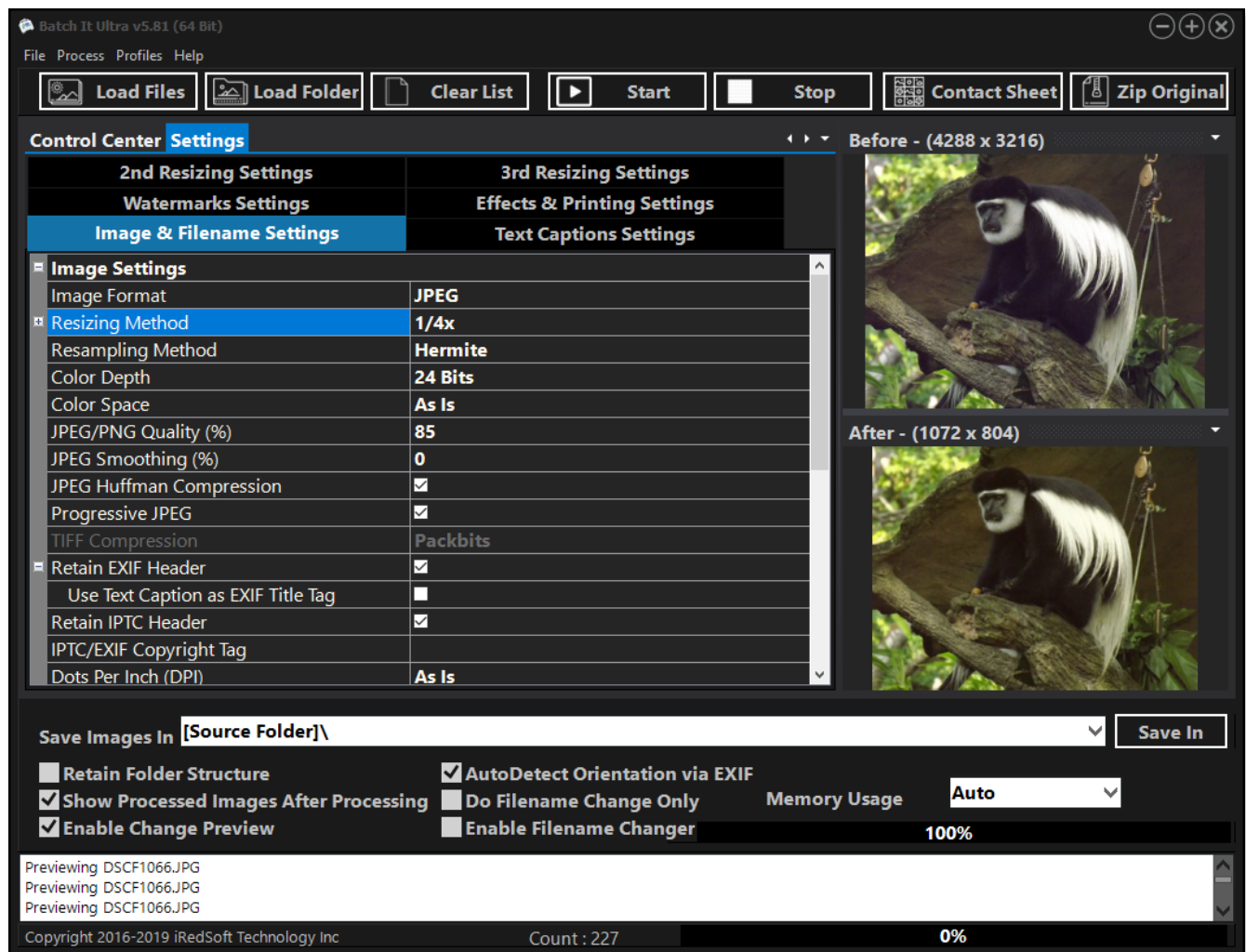
Drag and Drop

The File Listing can accept one or more image files and folders which are dragged in from Windows Explorer. Only supported images would be added to the list. The images in the main folder would be added first followed the subsequent sub folders (where applicable). All files would be checked to determine that they exists before they are added.

Manual Sorting

Although you can use the Sort Ascendingly or Sort Descendingly method to sort the list, you can also manually drag any column on the list and drop it to its new location within the list. This will allow you to sort it beyond the usual ascending or descending methods.

Settings



There are 6 tabs on the Settings Page which allows you control different aspects of the image processing and how your output files would look like.

- ➔ **Image & Filename Settings** - The tab contains the Image Settings which would allow you to determine which image format, image dimension and quality of the output image files while the Filename Changer would allow you to set how the output image filenames would look like.
- ➔ **Text Captions Settings** - Batch It Ultra offers you the ability to add up to 3 text captions to each image. You can use this to add either a static or dynamic text caption. This would be useful when you want to add a simple description to the image or your copyright text tags.
- ➔ **Watermarks Settings** - Apart from text captions, Batch It Ultra offers the option to add up to 3 graphical watermarks to the images. For transparent background watermarks, PNG or

GIF images are preferred.

- ➡ **Effects & Printing Settings** - The tab contains settings to enhance your images by adjusting image refinements or by applying one or more of the special effects. The Contact Sheet Printing option allows you to determine if you want Batch It Ultra to generate a Contact Sheet and its related settings.
- ➡ **2nd Resizing Settings & 3rd Resizing Settings** - We understand that some of our users may want to be able to generate more than a single dimension of the images, perhaps one to be displayed on the web and another as a thumbnail image. The 2nd and 3rd Resizing Settings allow you to do so by having Batch It Ultra generate the different image sizes in a single pass so you do not need to load different Settings Profile and running it all over again for the different sizes you need.

You can all the options in the Settings tab. By default, the dropbox menu and edit boxes do not show up automatically until you click that particular settings option.

Apart from the tabs, the Savings Settings which is on the main application page would provide you with settings which would be frequently used.

Image & Filename Settings

There are two core parts to this tab, the Image Settings and the Filename Changer.

Image Settings

Image Settings	
Image Format	As Is
Resizing Method	1/4x
Resampling Method	Lanczos3
Color Depth	24 Bits
Color Space	As Is
JPEG/PNG Quality (%)	85
JPEG Smoothing (%)	0
JPEG Huffman Compression	<input checked="" type="checkbox"/>
Progressive JPEG	<input checked="" type="checkbox"/>
TIFF Compression	Packbits
Retain EXIF Header	<input checked="" type="checkbox"/>
Use Text Caption as EXIF Title Tag	<input type="checkbox"/>
Retain IPTC Header	<input checked="" type="checkbox"/>
IPTC/EXIF Copyright Tag	
Dots Per Inch (DPI)	As Is
Set Background Color (From PNG/GIF)	<input type="checkbox"/>
Background Color	<input type="color" value="#FFCCBB"/> #FFCCBB

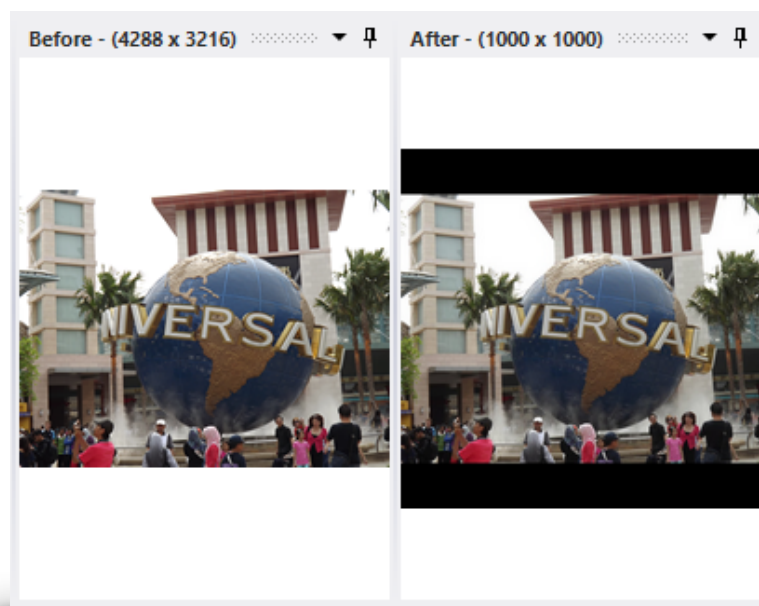
- ➔ **Image Format** - The option let you determine which image format the output files would be saved in. When the Image Format is set to As Is, the images would be saved in the same image format as the original images. However, when output to the original image format is not supported, the image would be saved as a PNG image file.
- ➔ **Resizing Method** - Batch It Ultra supports several methods to resize your images and the options are As Is, Downsize By Pixels, Upsize By Pixels, Resizing By Pixels, By Percentage, By Cropping, By Frame, 1/4x, 1/3x, 2/3x, 3/4x, 1 1/2x and 2x. The Relevant Settings would be shown depending on which Resizing Method is selected.

By Percentage, 1/4x , 1/3x , 2/3x , 3/4x, 1 1/2x and 2x basically are different ways of doing the same thing. They allow you to downsize or upsize the images with ratio aspects respected. As the ratio aspects are respected, the input images with different dimensions may yield images with varying dimensions. This would probably be alright if all the images are generated from the same source.

The Downsize By Pixels and Upsize By Pixels does the same but gives you the option to

determine if you want to have the resized image respect ratio aspects or not.

The By Cropping method is not purely a resizing but rather a method to allow you to crop the borders around the images.



The By Frame method is another method of resizing your images while keeping the image ratio aspects. The core difference between this and the above methods is that the image physical dimension would always remain the same as the borders which are smaller than the frame would be padded. This would be useful when you need to post images which are always the same dimensions.

- ➔ **Width** - This represent the width in pixels and would be shown when Resizing Method is set to Downsize By Pixels, Upsize By Pixels, By Cropping or By Frame. When this is set to 0, the image width would be used.
- ➔ **Height** - This represents the height in pixels and would be shown when Resizing Method is set to Downsize By Pixels, Upsize By Pixels, By Cropping or By Frame. When this is set to 0, the image height would be used.

Resizing Method	Width and Height Representation
Downsize By Pixels	Maximum Width and Height
Upsize By Pixels	Minimum Width and Height
Resizing By Pixels	When images dimensions are bigger, Maximum Width and Height but when they are smaller then Minimum Width and Height
By Cropping	The Actual Width and Height of the Output Image
By Frame	The Width and Height of the Frame

- ➡ **Resizing Preference** - When using the Resizing by Pixels options, any images which have both their dimensions larger than the Width and Height settings will be downsize and those smaller will be upsize. However when a situation when one of the dimension is larger and the other is smaller, the Resizing Preference option will be used as the final factor.
- ➡ **Keep Dimension Ratio Aspect** - When this option is checked and Downsize By Pixels or Upsize By Pixels is used, Batch It Ultra will ensure that the image are resized while maintain ratio aspect. When this image is unchecked, the images would be resized to the set Width and Height without respecting the ratio aspect.
- ➡ **Swap Dimension if Portrait** - When this option is unchecked, the image horizontal dimension would be treated as Width and the vertical dimension would be treated as Height. When this option is checked, the longest dimension would be treated as width and the shortest dimension would be treated as height.
- ➡ **Percentage (%)** - This option is used when the Resizing Method is set to By Percentage. The Dropdown Menu would offer several options and if the options are insufficient, you may enter the percentage to use. This option only supports whole numbers.
- ➡ **Crop X Axis** and **Crop Y Axis** - These options are used when the Resizing Method is set to By Cropping. The Crop X Axis would mark the left-most point and the Crop Y Axis would mark the top-most point to start cropping from.
- ➡ **Frame Color** - When the Resizing Method is set to By Frame, the Frame Color would be the background color for the padded dimension. You can either use the Color Selector Drop menu to pick a color or you can type in a web hexadecimal friendly RGB color representation here.
- ➡ **Upsize to Fit** - When this option is unchecked and used in conjunction with the Resizing Method is set to By Frame, images which are larger than the Frame Width and Height would be downsized to fit while images which are smaller than the frame width and height would be placed in the center of the frame and all this while retaining the ratio aspect.

When this option is checked, all images which are smaller than the frame width and height will be upsize to fit into the frame.

Resizing Method	Settings Used	Remarks
As Is	None	No Resizing Performed
Downsize By Pixels	Width, Height, Keep Dimension Ratio Aspect, Swap Dimensions if Portrait Image	The Width and Height is used to set the Maximum Image Dimensions.

Resizing Method	Settings Used	Remarks
Upsize By Pixels	Width, Height, Keep Dimension Ratio Aspect, Swap Dimensions if Portrait Image	The Width and Height is used to set the Minimum Image Dimensions.
By Percentage	Percentage (%)	The Image would be resized based on the percentage.
By Cropping	Width, Height, Crop X Axis, Crop Y Axis	You could set all the settings visually by creating the dimension in the Before Preview Windows and using the Contextual Menu to set the Dimensions in Settings
By Frame	Width, Height, Frame Color, Upsize to Fit	The Width and Height sets the frame of the images where the image would be resized with ratio aspect and any dimensions which is smaller would be padded.
1/4x, 1/3x, 1/2x, 2/3x, 3/4x, 1 1/2x, 2x	None	The images would be resized based on the ratio and their ratio aspects would be respected.

- ➔ **Resampling Method** - Batch It Ultra offers several resampling interpolation methods. Each of the option offers different method of resizing the images. For images, using Lanczos3 would yield the best quality pictures but is the slowest resampling method. The ProjectBW and ProjectWB would work best for black and white images. Try different methods to see which offers the best output for your needs.
- ➔ **Color Depth** - Set the number of colors to be used in the images. A color image such as a JPEG would use a 24 bit palette. Setting the color depth down for such images would just visually change the palette used for these images they would still be saved as 24 Bit JPEG.

Color Depth	No of Colors
1 Bit	Black and White
4 Bits	16 Color Palette
8 Bits	256 Color Palette
24 Bits	16.7 Million Color Palette
48 Bits	Only TIFF format currently supports 48 Bits and if the Image Format is set to anything other than TIFF, the resultant image would be saved as 24 Bits.

- ➡ **Color Space** - Typically, keeping the Color Space as As Is should be the best option but there may be times you might need to change it and this option allows you to select between RGB, CMYK, YCbCr, YCbCrk and Gray Level. When the Image Format is set to JPEG and the Color Space is set to Gray Level, Batch It Ultra will save the file as a Gray Scale JPEG.
- ➡ **JPEG/PNG Quality (%)** - This option is used by JPEG, JPEG 2000 and PNG images. When you set the JPEG/PNG Quality (%) to 100, Batch It Ultra would try to determine the quality setting used with the original file and use it.
- ➡ **JPEG Smoothing (%)** - When the JPEG quality is set low, you might notice pixelization on the images. To minimize this effect, you can apply JPEG Smoothing to blur/smooth out the edges.
- ➡ **JPEG Huffman Compression** - The Huffman Compression uses an efficient algorithm to encode the JPEG details.
- ➡ **Progressive JPEG** - This option is relevant if you are using the output JPEG file on the web especially on slow internet connection. With this option unchecked, the JPEG image would be loaded fully on the web browser before it shows up. When Progressive JPEG option is checked, the JPEG file would progressively show up while it loads in the web browser.
- ➡ **TIFF Compression** - This provides several options for compressing a TIFF file. The G3 and G4 compressions are typically used for black and white tiff files as these were standard used by fax machines. LZW and Packbits are commonly used compression algorithm used for color pictures. The JPEG format v7 is lesser used format and may not be supported on all viewers.
- ➡ **Retain EXIF Header** - The EXIF Header is used mainly by digital camera to store camera settings used in taking the picture and may contain also include a thumbnail of the JPEG photos. This header does add up several kilobytes to the file size. If you require a smaller file size especially when merely generating thumbnails, unchecking this option would inevitably reduce the file size by about 15 to 20 kilobytes depending on the details stored.
- ➡ **Use Text Caption as EXIF Title Tag** - When checked, Batch It Ultra will use the text caption entry in either the File Listing or First Text Caption as the Title Tag in the JPEG EXIF Header.
- ➡ **Retain IPTC Header** - In the Press World, photos may embed story headlines, text and other details pertaining to the photos. It makes for a great way of storing information. However, this header is typically not being used on standard cameras or the general public.
- ➡ **IPTC/EXIF Copyright Tag** - You can use enter your text based copyright tag in here and it will be embedded in the IPTC and/or the EXIF Copyright tag.

- ➡ **Dots Per Inch (DPI)** - In the past, Dots Per Inch was an important information which determines the actual print or display dimensions in a desktop publisher or printer. In today's contexts, this is very rarely as model printers have their own interpolation algorithm to size images for print. Display devices now rely on the Width and Height in Pixels to display the images.
- ➡ **Set Background Color (From PNG/GIF) / Background Color** - Both PNG and GIF Images allows you to set a background color which would then appear as "transparent". By enabling this option and setting the Background Color, the PNG and GIF images saved would use this color as the transparent background color to be transparent.

Filename Changer

Filename Changer	
Filename Format	[OrgFilenameNoExt][Suffix]
Prefix	
Suffix	_01
Restart Number At Each Run	<input checked="" type="checkbox"/>
Start Number	1
Number of Digits	4
Case Option	As Is
Smart Replace	<input type="checkbox"/>
Replace From	
Replace With	
Retain Original Date/Time Stamp	<input type="checkbox"/>
Overwrite Files	<input type="checkbox"/>

The Filename Changer provides you the option to batch rename the images to your own defined format. This can be one which contains a Prefix + Running Number + Suffix where the prefix can be a description of a place or an event.

To enable Filename Changer, check the option Enable Filename Changer in the Saving Option. However if you want to retain the original filename or use the manually modified New Filename, uncheck this option.

➔ **Filename Format** - This dropdown menu includes several options in which you can structure your output filename as. The list is certainly not exhaustive and you can edit it to one which would meet your needs. **The filename however must contain at least one macro which is either [number] or [orgfilename] or [NN][SS] so as to ensure that not all files would overwrite each other especially when only static text is being used. Failing which, the filename will be reverted to [Prefix][Number][Suffix].** The filename should not contain the following characters / \ . - : ; ' " so as to ensure compatibility between all major operating systems.

Here are the list of Macros which you can use

Macros	Descriptions
[OrgFilename] or [OrgFilenameNoExt]	The original filename without the file extension. A file extension would be tag to the filename based on the Image Format selected.
[Prefix]	The Prefix entry in the Filename Changer
[Suffix]	The Suffix entry in the Filename Changer
[Number]	The Generated Running Number based on the Start Number and Number of Digits entries

Macros	Descriptions
[Folder]	The Current Subfolder name
[DD] or [Day]	The numeric day of the month
[DDD] or [ShortDay]	The abbreviated day of the month e.g. Sun
[DDDD] or [LongDay]	The full day of the month e.g. Sunday
[MM] or [Month]	The numeric month e.g. 11
[MMM] or [ShortMonth]	The abbreviated month e.g. Nov
[MMMM] or [LongMonth]	The full month e.g. November
[YY] or [ShortYear]	The two digit year e.g. 13
[YYYY] or [Year]	The full four digit year e.g. 2013
[HH] or [Hour]	The two digit hour
[NN] or [Minute]	The two digit minute
[SS] or [Second]	The two digit second

* The alphabetic Day, Month and Year would vary based on the language option used on the computer. Batch It Ultra would evaluate the Date and Time from the EXIF header but failing which would revert to the original file date and time

➡ **Prefix** - The Prefix which would be used for the [Prefix] macro

➡ **Suffix** - The Suffix which would be used for the [Suffix] macro

➡ **Restart Number At Each Run** - When checked, each time you run the processing, the Start Number for the first file's running number will be reset to the Start Number. With the option unchecked, the Start Number will be set to the next incremental number after the prior processing is completed.

Keeping this option unchecked may be useful if you want to process small list of files each time and ensuring the next time you use this profile, subsequent images would use the next running number.

➡ **Restart Number At Each Sub Folder** - When checked, each time the app encounters a new subfolder, the first file in that subfolder would be reset to the Start Number.

➡ **Start Number** - This is the first number Batch It Ultra will use for the [number] macro. If the Restart Number At Each Run is unchecked, this number will increment after the last image is processed and ready to be used by the next run.

➡ **Number of Digits** - This will determine how many zeros to pad the running number. If you set the Number of Digits to 4, it will ensure the numbers are padded to 4 digits. However,

this will not work if the numbers are higher than the Number of Digits and in which case, it would not be padded.

- ➡ **Case Option** - If you are deploying the images to the Unix or Linux environment which is case-sensitive, it might be a good idea to set the filenames so that they use a consistent case. By default, all file extensions are lowercase. You can use this option to set the filenames to upper or lower case.
- ➡ **Smart Replace / Replace From / Replace With** - Smart Replace allows you to replace certain text within the filename to something you predefined. In this case, when the Smart Replace is checked, any occurrence of the text set in the Replace From in the file name will be replaced by the entry in the Replace With.
- ➡ **Retain Original Date/Time Stamp** - Each time an output image is created, it is a brand new file with the current date and time stamp. If you want the output image to use the original filename's date and time stamp, check this option.
- ➡ **Overwrite Files** - This option only works when the Do Filename Change Only option is checked and when the Save Images In is set to the same folder of the original files. When this option is checked, the original files would be renamed otherwise you will get two copies of the files, one with the original name and one with the new name.

Renaming Non-Image Files

Apart from changing supported image files, Batch It Ultra can now support renaming of any types of files. To enable this support, check the **Do Filename Change Only** checkbox before loading the list of files via the Load Files, Load Folders or Dragging and Dropping the file list into the Control Center's File Listing.

To add only supported files, uncheck the **Do Filename Change Only** checkbox before loading the list of files and then checking it after to enable it's support.

Text Captions Settings

First Text Caption Properties	
Text Caption	White Bengal tiger
Text Alignment	Diagonal
Text X Axis Offset	0
Text Y Axis Offset	0
Font Type	Arial
Bold	<input checked="" type="checkbox"/>
Italic	<input checked="" type="checkbox"/>
Underline	<input type="checkbox"/>
Strikeout	<input type="checkbox"/>
Font Color	#336666
Font Size	160
Trim Spacing from Text	<input type="checkbox"/>
Enable Text Background Transparency	<input checked="" type="checkbox"/>
Text Caption Background Color	#FFFFF1
Text Transparency (%)	26% <input type="range" value="26"/>
Drop Shadow	<input checked="" type="checkbox"/>
Caption in Border	<input type="checkbox"/>
Border Color	#FFFFFF

Batch It Ultra offers the ability to add up to 3 Text Captions to each image. Text Captioning can be useful if you want to add on your text-based copyright tag or slogans to the page or even add a descriptive text to the image. The text captions are single line of text. Multiple line captions are not supported.

➔ **Text Caption** - This would be used if the Text Caption in the Control Center is set to [UseSettings] otherwise the File Listing Text Caption column would be used instead. The Text Caption can be a mix of Macros and Static Text.

Here are the list of Macros which can be used

Macros	Description
[UseSettings]	When this is used, the Text Caption on the Text Caption tab would be used
[Filename]	The new filename with its file extension but without the file path would be used.
[FilenameNoExt]	The new filename without the file extension and without the file path would be used.
[OrgFilename]	The Original filename with its file extension but without the file path would be used.

Macros	Description
[OrgFilenameNoExt]	The Original filename without the file extension and without the file path would be used.
[Date]	The File Short Date based on your locale and language
[DateTime]	The File Short Date and Time based on your locale and language
[DD] or [Day]	The File numerical Day of the month
[DDD] or [ShortDay]	The File abbreviated day of the month
[DDDD] or [LongDay]	The File day of the month
[MM] or [Month]	The File numerical month
[MMM] or [ShortMonth]	The File abbreviated month
[MMMM] or [LongMonth]	The File month
[YY] or [ShortYear]	The File 2 digit year
[YYYY] or [Year]	The File 4 digit year
[HH] or [Hour]	The File 2 digit hour
[NN] or [Minute]	The File 2 digit minute
[SS] or [Second]	The File 2 digit second
[GPSCoord]	The GPS Coordinates in Hours, Minutes and Seconds
[GPSLatDeg]	The GPS Latitude in Decimal Degrees
[GPSLongDeg]	The GPS Longitude in Decimal Degrees
[FNumber]	The F Stop Number
[FocalLength]	The Focal Length in mm
[ExposureProgram]	The Exposure Program number used by the camera
[ExposureTime]	The Exposure Time used by the camera
[UserComment]	The User Comment in the EXIF header
[XPComment]	The Windows based Comment added within Properties
[Comment]	The EXIF User Comment will be used by default but if it is not present, the XP Comment is used instead.

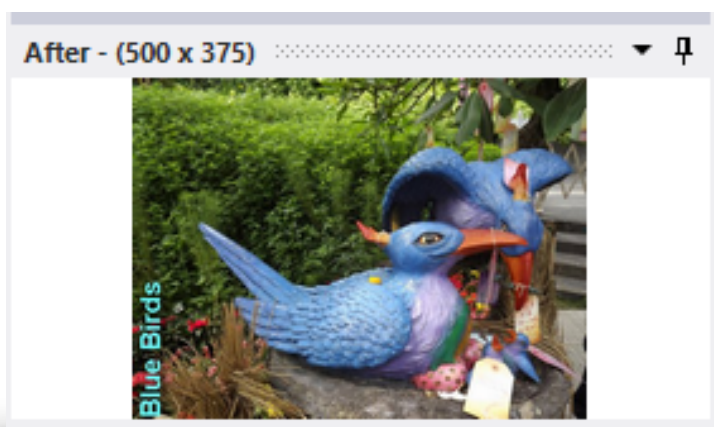
* The Date and Time would be taken off the EXIF header of the image file and failing which, it would take it from the original file date and time stamp.

You can used a combination of dynamic text via macros and static text with the text captions for example, **Lat [GPSLatDeg] Long [GPSLongDeg]** . In this case, the “Lat” and “Long” are

static components of the text caption and the [GPSLatDeg] and [GPSLongDeg] will be taken dynamically from each photos' EXIF header.

➔ **Text Alignment** - When the Text Alignment is set to None, no text caption would be added to the images. There are 15 options here and they are

Text Alignment	Description
None	No Text Caption would be applied
Top Left	The Text Caption would be left justified on the top
Top Middle	The Text would be centralized on the top
Top Right	The Text would be right justified on the top
Center Left	The Text would be vertically centralized and left justified
Center Middle	The Text would be vertically and horizontally justified
Center Right	The Text would be vertically centralized and right justified
Bottom Left	The Text would be left justified at the bottom
Bottom Middle	The Text would be centralized at the bottom
Bottom Right	The Text would be right justified at the bottom
Vertical Left BottomUp	The Text would start from the bottom to the top on the left side
Vertical Left TopDown	The Text would start from the top to the bottom on the left side
Vertical Right BottomUp	The Text would start from the bottom to the top on the right side
Vertical Right TopDown	The Text would start from the top to the bottom on the right side
Random	The Text would be randomly placed based on the above mentioned alignment
Random Corners	The Text would be randomly placed on either Top Left, Top Right, Bottom Left and Bottom Right
Diagonal	The Text Caption would be centered in the middle of the picture at a 45° Angle



The above picture shows the text alignment set to **Vertical Left BottomUp**.

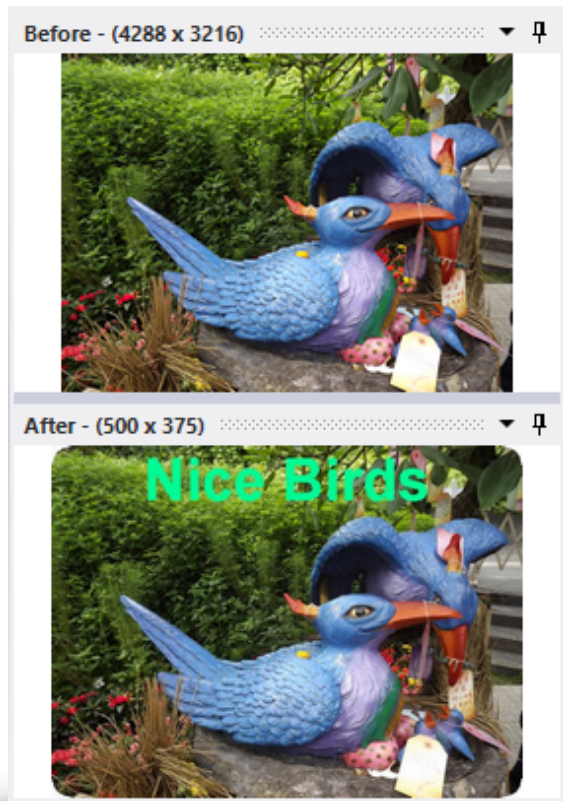
- ➡ **Text X Axis Offset / Text Y Axis Offset** - The Text Alignment positions are precisely computed but you could make adjustments to the alignment by using these two offsets. They will accept both positive and negative numbers. Do take note that if the offset is set too far, the text may be set outside of the images and thus would be truncated or not appear. This will add the offset to the Text Alignment settings.
- ➡ **Font Type** - This would be the font type which would be used for the Text Caption. The list is taken from the installed fonts on the computer and may vary from computer to computer.
- ➡ **Bold** - This will bold the text caption
- ➡ **Italic** - This will apply the italic style to the text caption
- ➡ **Underline** - This will underline the text caption
- ➡ **Strikeout** - This will apply the strikeout style to the text caption
- ➡ **Font Color** - The color which would be used for the text caption
- ➡ **Font Size** - The font size of the text caption in Pixels
- ➡ **Trim Spacing from Text** - When this option checked, all spacing from the left and right of the text would be removed. If you want to pad the text slightly, you can add spacing to the text.
- ➡ **Enable Text Background Transparency** - With this option checked, the text caption would not come with a background border.
- ➡ **Text Caption Background Color** - If the Enable Text Caption Transparency is unchecked, it will use this color as the background color for the text caption. Ensure that this background color is the same as the font color, otherwise nothing would be seen.



The above image has the **Enable Text Caption Transparency** unchecked which would place a background behind the text to increase visibility.

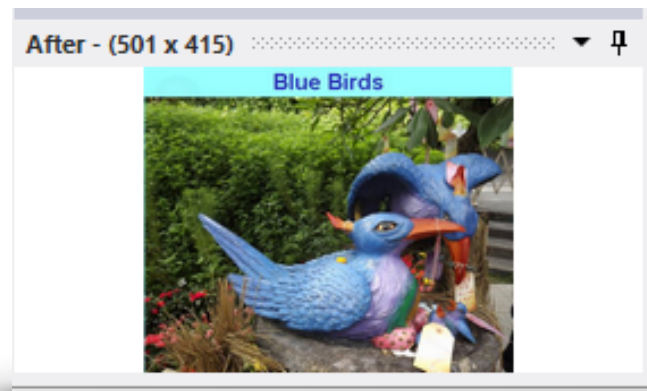
- ➡ **Text Transparency (%)** - Set the transparency of the Text Caption.
- ➡ **Drop Shadow** - Checking this option will apply a drop shadow for the text caption.

The Left Photo has the Drop Shadow option unchecked which creates a flat text while the right picture has Drop Shadow option checked which gives you a 3D text effect. All other settings are the same.



- ➡ **Caption in Border** - When this option is unchecked, the Text Caption will appear inside the image. If it is checked and the Text Alignment is not set to Center Left, Center Middle, or Center Right, a border is added where the text caption would be drawn into.

Sometimes it is hard to get a font color which would be visible on the image or you might not want to block the finer details of the image and in this situation, the Caption in Border option would be applicable.



- ➡ The above preview shows the text caption added in a border at the top where the **Caption in Border** option is checked.
- ➡ **Border Color** - When the Caption in Border option is checked, this color would be used as the background. Ensure that this is not the same color as the font color as they will merge into each other.

The above options are the same for the Second and Third Text Caption Settings.

Watermark Settings

Watermarks are the graphical equivalent of the text caption and can be used to embed logos or graphical based captions or copyright tags.

First Watermark Settings	
Watermark Image	E:\watermark1.jpg
Watermark Alignment	Center Middle
X Axis Offset	0
Y Axis Offset	0
Use Alpha Channel	<input type="checkbox"/>
Watermark Transparency [18]	<input type="range"/>
Add Drop Shadow Effect	<input type="checkbox"/>
Resize To	
Width	0
Height	1080

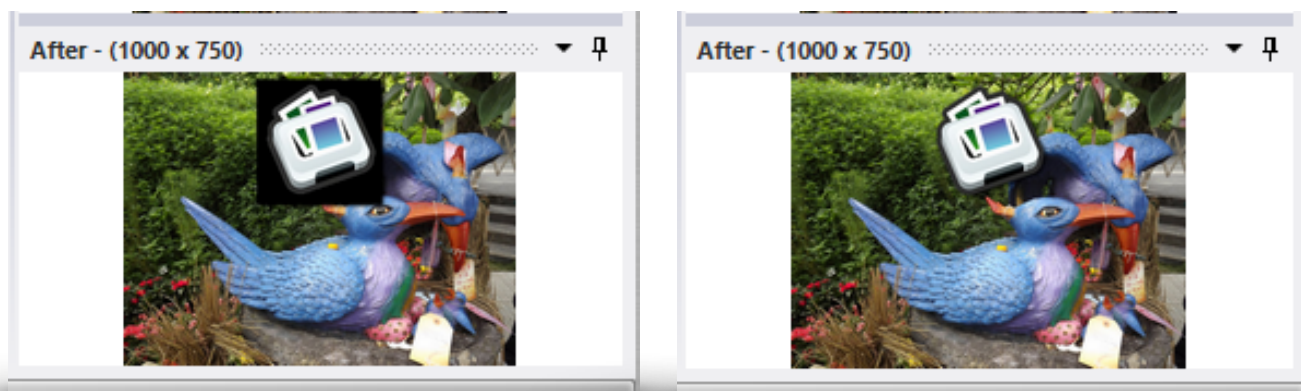
As with Text Captions, you can embed up to 3 watermarks to a single image. Batch It Ultra supports JPEG, PNG, TIFF, BMP and GIF images as a watermark but the GIF or PNG image format is preferred if need to embed a watermark with a transparent background as GIF and PNG are the only two image formats which supports that.

- ➡ **Watermark Image** - Use this to select a watermark image to be used.
- ➡ **Watermark Alignment** - When the Watermark Alignment is set to None, no watermark would be added.

Watermark Alignment	Description
None	No Watermark would be added
Top Left	The Watermark would be left justified on the top
Top Middle	The Watermark would be centralized on the top
Top Right	The Watermark would be right justified on the top
Center Left	The Watermark would be vertically centralized and left justified
Center Middle	The Watermark would be vertically and horizontally justified
Center Right	The Watermark would be vertically centralized and right justified
Bottom Left	The Watermark would be left justified at the bottom
Bottom Middle	The Watermark would be centralized at the bottom
Bottom Right	The Watermark would be right justified at the bottom

Watermark Alignment	Description
Random	The Watermark would be randomly based on any of the above-mentioned positions
Random Corners	The Watermark would be randomly based on either Top Left, Top Right, Bottom Left or Bottom Right

- ➔ **X Axis Offset / Y Axis Offset** - If you need to fine-tune the alignment, you can use these two options to align the watermark to the position you want. This option would be in pixels.
- ➔ **Use Alpha Channel** - The Alpha Channel is the transparency mask used by PNG or GIF images. Like the Blue Screen used in the Film Studio which the special effects team would use to replace the background with, the same concept applies here. For the PNG or GIF images, you can assign a color as that “Blue Screen” which would be digitally removed. When the Use Alpha Channel is checked, the alpha channel mask color would be removed otherwise that color and thus the background would show up.



The picture on the left has the Use Alpha Channel option unchecked and shows up the transparency mask color background while the one on the right has the Use Alpha Channel option checked which would show the watermark with a transparent background.

- ➔ **Watermark Transparency** - This applies to the entire image and determines the transparency of the watermark. 0 would denote full opacity and 100 is full transparency.
- ➔ **Add Drop Shadow Effect** - When this option is checked, a soft drop shadow effect would be applied to the watermark.
- ➔ **Resize To / Width / Height** - When the Width and Height is set to 0, the watermark will not be resized and would be taken as it is. To maintain the ratio aspect of the watermark, keep one of the dimension as 0. The Width and Height settings are in pixels.

The above applies to both the Second and Third Watermark Settings.

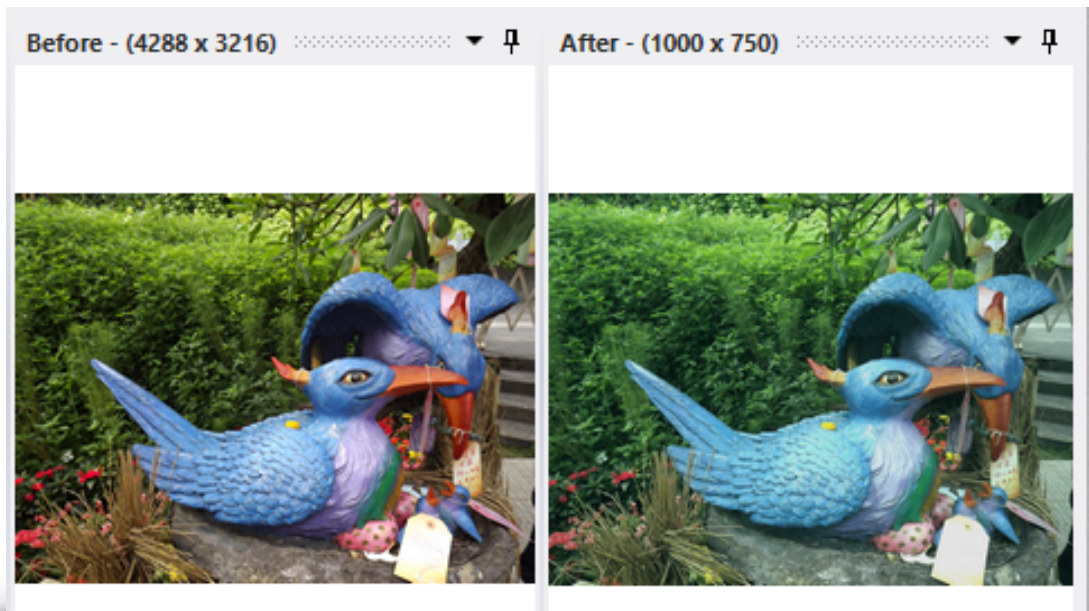
Image Effects

The Image Effects settings would offer you the option to enhance the images or to apply special effects to the images.

Image Effects	
Sharpen	<input type="checkbox"/>
Sharpen More	<input type="checkbox"/>
Blur	<input type="checkbox"/>
Blur More	<input type="checkbox"/>
Brightness [-3]	<input type="range" value="100"/>
Contrast [-3]	<input type="range" value="100"/>
Old Photo	<input type="checkbox"/>
Emboss	<input type="checkbox"/>
Negative	<input type="checkbox"/>
Sepia	<input type="checkbox"/>
Sepia Contrast [99]	<input type="range" value="100"/>
Grayscale	<input type="checkbox"/>
Equalize	<input type="checkbox"/>
Red [-71]	<input type="range" value="100"/>
Green [-73]	<input type="range" value="100"/>
Blue [-71]	<input type="range" value="100"/>
Drop Shadow	<input type="checkbox"/>
Shadow Size	5
Drop Shadow X Offset	5
Drop Shadow Y Offset	5
Drop Shadow Color	<input type="color" value="#000000"/>
Drop Shadow Opacity [0]	<input type="range" value="100"/>
Drop Shadow Background Color	<input type="color" value="#FFFFFF"/>
Red Eye Removal	<input type="checkbox"/>
Round Corners	<input type="checkbox"/>
Round Corners Size	0
Add Border	<input type="checkbox"/>
Border Thickness	1
Border Color	<input type="color" value="#000000"/>
Do Tiling	<input type="checkbox"/>
Tile Columns	1
Tile Rows	1

- ➡ **Sharpen / Sharpen More** - This would apply the sharpen effect to the images. The Sharpen More would apply double the intensity.
- ➡ **Blur / Blur More** - This would soften the images. The Blur More would apply double the blur intensity.
- ➡ **Brightness** - Use the slider to increase or decrease the brightness.

- ➡ **Contrast** - Use the slider to increase or decrease the contrast.
- ➡ **Old Photo** - This will add a green-bluish tint and decrease the luminosity to the image to give it that old photo effect.

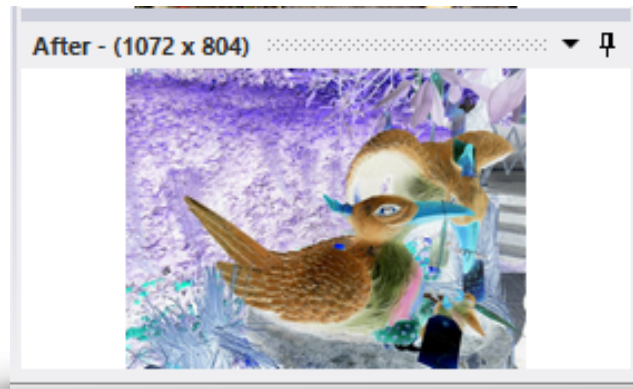


The picture on the right has the **Old Photo** effect applied

- ➡ **Emboss** - Use this to add an Emboss effect to the image.



- ➡ **Negative** - This will inverse the colors of the image like the effect of the film negative.



- ➡ **Sepia** - This will add a Sepia effect to the image.
- ➡ **Sepia Contrast** - The Sepia contrast would allow you to determine the intensity of sepia tint to be applied when the Sepia effect is applied.

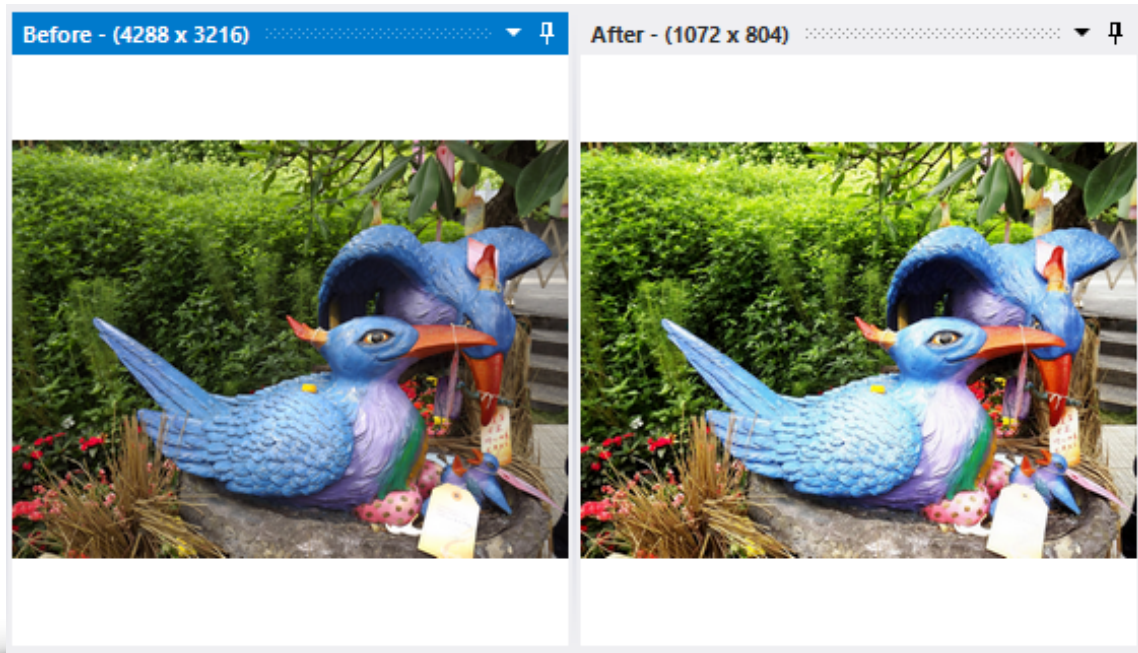


The sepia effect set with a Sepia Contrast at 50

- ➡ **Grayscale** - This will add the Grayscale effect to the images. If you want to create a true Grayscale JPEG or JPEG 2000 images, set the Color Space to Gray Level.



- ➡ **Equalize** - This will have Batch It Ultra evaluate the intensity level of all the color and adjust the contrast to get the full dynamic range of the images.

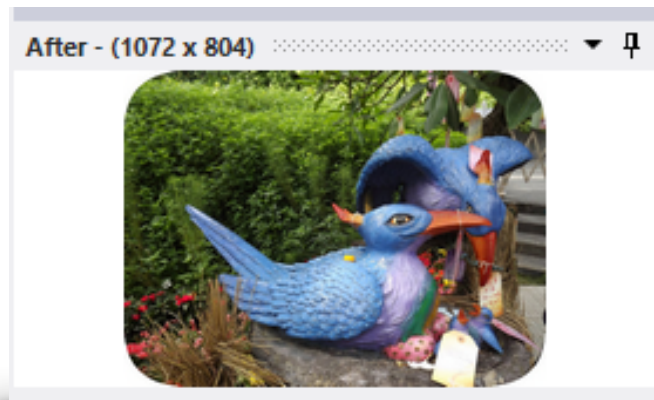


- ➡ **Red / Green / Blue** - These three options would allow you to adjust the intensity of the respective colors (Red, Green and Blue). By dragging the slider to below 0, it will reduce the intensity of the color.
- ➡ **Drop Shadow** - Checking this option would add a Drop Shadow to the image.
- ➡ **Shadow Size** - This determines the size of the shadow in pixels
- ➡ **Drop Shadow X Offset / Drop Shadow Y Offset** - These two settings to determine where the drop shadow would be placed. A negative X would shift the drop shadow to the left while a positive number would shift it to the right.
- ➡ **Drop Shadow Color** - This color would be used as the Drop Shadow Color. Typically a black transparent shadow is applied as a drop shadow but as this is the drop shadow around the image, black may not be a good color especially if the image would be use on a web page or a document. As such, Batch It Ultra allows you to pick your own drop shadow color.
- ➡ **Drop Shadow Opacity** - This will determine the opacity of the drop shadow. 0 is full transparency and 100 is full opacity. A typical setting would be 50.
- ➡ **Drop Shadow Background Color** - This would be the background color where the drop shadow would reside. This allows you to blend this background to your webpage or document.



The navy blue drop shadow color set with a Drop Shadow Opacity of 50.

- ➡ **Red Eye Removal** - This will remove the excessive red within the image especially in the eyes. This will be relevant to older cameras which does not use the double flash to reduce or remove the red eye effect.
- ➡ **Round Corners / Round Corner Size** - This option allows you to add a rounded corner effect around the image and the Round Corner Size would determine the radius of this round corner in pixels.

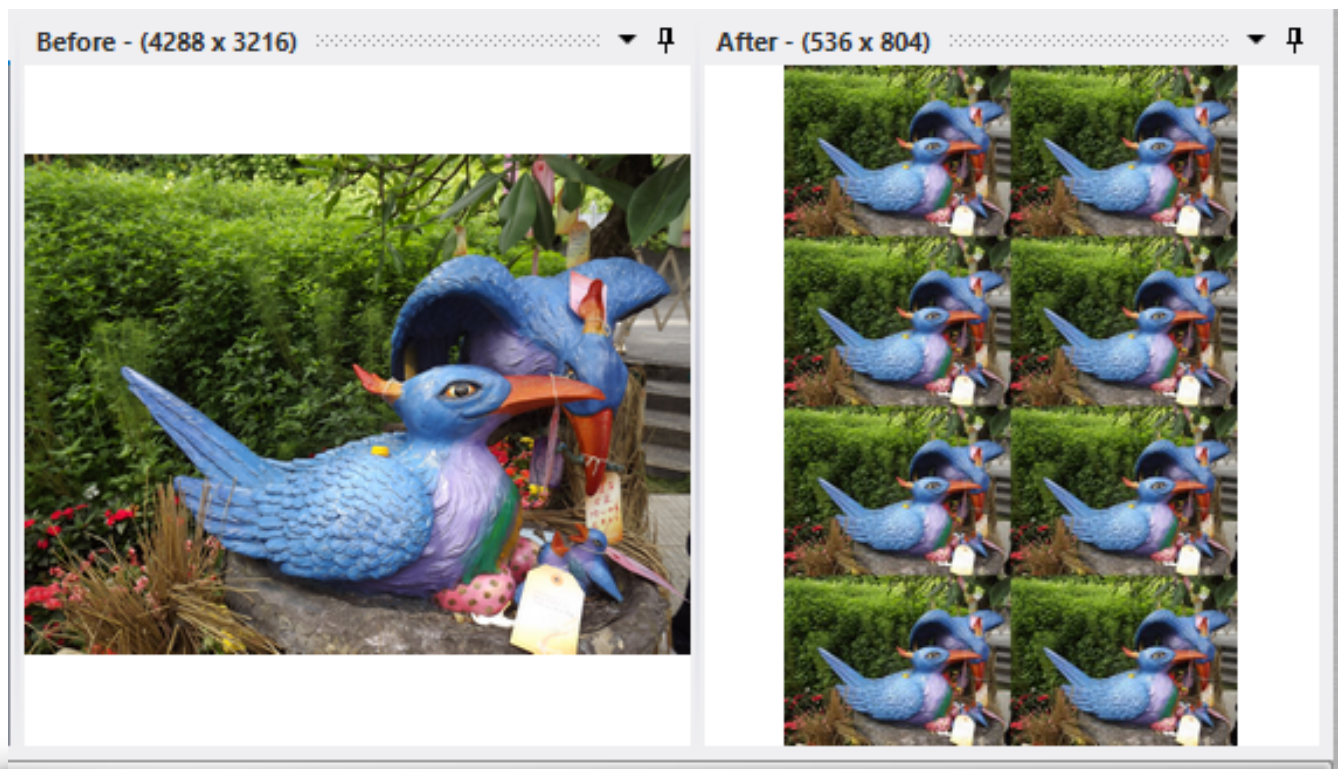


- ➡ **Add Border / Border Thickness / Border Color** - The add border option would allow you to add a border around the image. The Border Thickness option would set the thickness of this border in pixels and the Border Color would be the color of that border.



The above is set with a border thickness of 10 and the Border Color is set to Red.

Do Tiling / Tile Columns / Tile Rows - The Tiling effect would replicate the image into several copies of itself within image based on the set Tile Columns and Tile Rows.

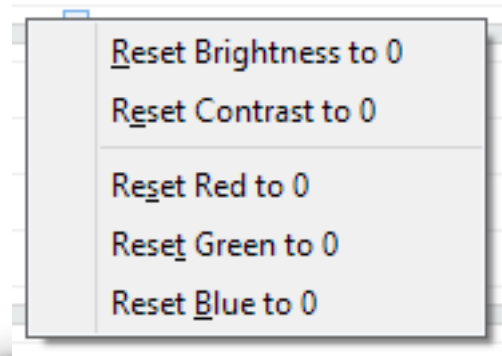


Resetting The Slider Controls

The Brightness, Contrast, Red, Green and Blue effects are by default set to 0 (in the middle) which means that these effects are not being applied. You can change the values by sliding

left or right.

If you want to reset any one of these sliders to 0, you can either drag it to that point or bring up the contextual menu by doing a right-mouse click on the settings page and select the appropriate reset option.



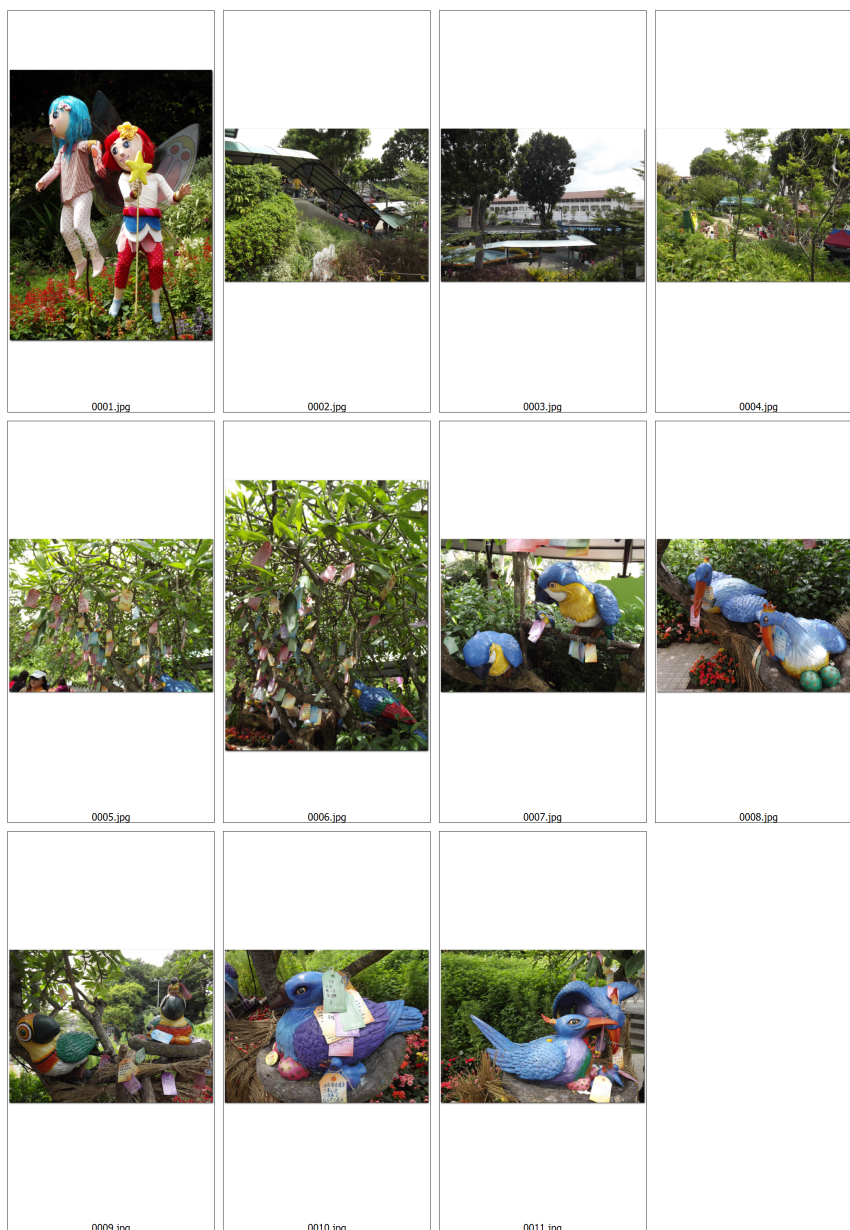
Contact Sheet Printing

A Contact Sheet is a thumbnail gallery which can either be printed or be saved to a JPEG, PNG or TIFF file. This is reminiscence of the photo negatives which you get after developing your film based photos.

Contact Sheet Printing	
Enable Contact Sheet Printing	<input type="checkbox"/>
Send to	File
File Name	G:\Photograph\Pictures form 6.10.17\contactsheet.png
Contact Sheet Size	Legal
Contact Sheet Page Width	2550
Contact Sheet Page Height	4200
Number of Columns	4
Number of Rows	6
Include Filename	<input type="checkbox"/>
Add Drop Shadow	<input type="checkbox"/>
Add Border	<input type="checkbox"/>

- ➡ **Enable Contact Sheet Printing** - When enabled, Batch It Ultra will generate a contact sheet after processing the images on the list. This option does not need to be checked if you access Contact Sheet via the Contact Sheet button in the Icon Toolbar.
- ➡ **Send To** - This option allow you to determine if the contact sheet would be send to the default Printer or to File (an image file which can be either a JPEG, PNG or Multi-Page TIFF).
- ➡ **File Name** - This would be the file name of the contact sheet file. The file type would be determined by the file extension used. If the File Name is set to a JPEG and PNG file and the contact sheet spans beyond the one page, the pages would be renamed to include a zero padded page number. However, if File Name is set to a TIFF file and spans beyond the one page, a Multi-Page TIFF is created with all the pages of the contact sheet.
- ➡ **Contact Sheet Size / Contact Sheet Page Width / Contact Sheet Page Height** - You can use the Contact Sheet Size to pick a pre-determined paper size and once selected, it will automatically enter the Contact Sheet Page Width and Contact Sheet Page Height entries. The Contact Sheet would be saved using a Dots Per Inch of 300 pixels. Use custom if you want to set your own Width and Height. This option is only relevant when Send To is set to File. When sending to Printer, Batch It Ultra will poll the page dimensions from your default printer.
- ➡ **Number of Columns / Number of Rows** - This determines the number of columns and rows in the contact sheet grid.

- ➡ **Include Filename** - When checked, the Filename would be included under the thumbnails on the contact sheet.
- ➡ **Add Drop Shadow** - When checked, a drop shadow effect would added around the image.
- ➡ **Add Border** - When checked, a border would be drawn around the picture to separate it from the others.



The above is a sample of a contact sheet created with 11 photos with the Number of Columns set to 4 and the Number of Rows set to 3.

Note

When you use the Contact Sheet Icon Button, it will generate a contact sheet from the list of original photos as opposed to using the Contact Sheet option within the Batch Image Processing which would generate the contact sheet from the processed images with their new names.

2nd Resizing Settings & 3rd Resizing Settings

Batch It Ultra allows you to generate up to 3 resizes of the same images within a single run.

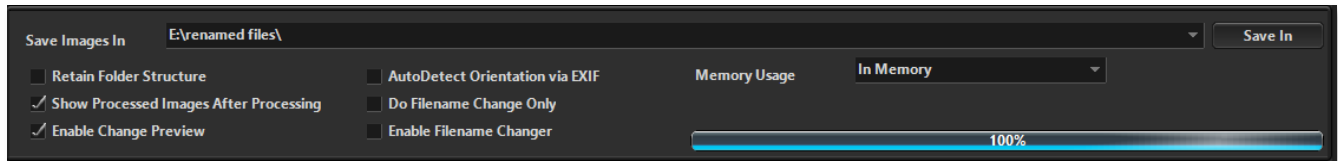
Second Resizing Settings	
Enable Second Resizing	<input type="checkbox"/>
Include Text Caption	<input type="checkbox"/>
Include Watermark	<input type="checkbox"/>
Include Image Effects	<input type="checkbox"/>
Image Settings	
Image Format	As Is
Resizing Method	By Percentage
Percentage (%)	30
Width	0
Height	0
Resizing Preference (Resize by Pixels)	Downsize
Crop X Axis	0
Crop Y Axis	0
Keep Dimension Ratio Aspect	<input type="checkbox"/>
Swap Dimensions if Portrait	<input type="checkbox"/>
Frame Color	<input type="color" value="#000000"/> #000000
Upsize to Fit	<input type="checkbox"/>
Resampling Method	Lanczos3
Color Depth	24 Bits
Color Space	As Is
JPEG/PNG Quality (%)	85
JPEG Smoothing (%)	0
JPEG Huffman Compression	<input checked="" type="checkbox"/>
Progressive JPEG	<input checked="" type="checkbox"/>
TIFF Compression	Packbits
Retain EXIF Header	<input type="checkbox"/>
Use Text Caption as EXIF Title Tag	<input type="checkbox"/>
Retain IPTC Header	<input checked="" type="checkbox"/>
IPTC/EXIF Copyright Tag	
Dots Per Inch (DPI)	As Is
Set Background Color (From PNG/GIF)	<input type="checkbox"/>
Background Color	<input type="color" value="#FFCCBB"/> #FFCCBB
Filename Changer	
Prefix	ss
Suffix	
Based On	New Name
Save In	
Save In Folder	C:\Users\iredsoft\Desktop\
Retain Folder Structure	<input type="checkbox"/>

Both the 2nd and 3rd Resizing Settings are similar and most of the settings are found in the Image & Filename Settings.

- ➡ **Enable Second Resizing / Enable Third Resizing** - The 2nd and 3rd resizing would only be activated when this option is checked.
- ➡ **Include Text Caption** - When this option is checked, the 3 text captions would be embedded to the images as and where relevant.
- ➡ **Include Watermark** - When this option is checked, the 3 watermarks would be included in the images as and where relevant.
- ➡ **Include Image Effects** - When this option is checked, the image effects would be applied to the images.
- ➡ **Prefix / Suffix / Based On** - The 2nd or 3rd Output files would be saved using either the new or old filename depending on the Based On settings. You can add a Prefix and/or Suffix to the filename to differentiate the files.
- ➡ **Save in Folder** - This would be the folder in which the output processed image files would be saved in. This can be the same as the Save Images In Folder but if you do so, ensure that the filename is different from the main output file by either tagging on a Prefix and/or a Suffix to the image filename of the 2nd and 3rd Resizing or saving them in a different image format, otherwise the initial files would be overwritten.

Saving Options

The Saving options is a quick panel which is ever present which contains settings which you may need to access on a more regular basis.

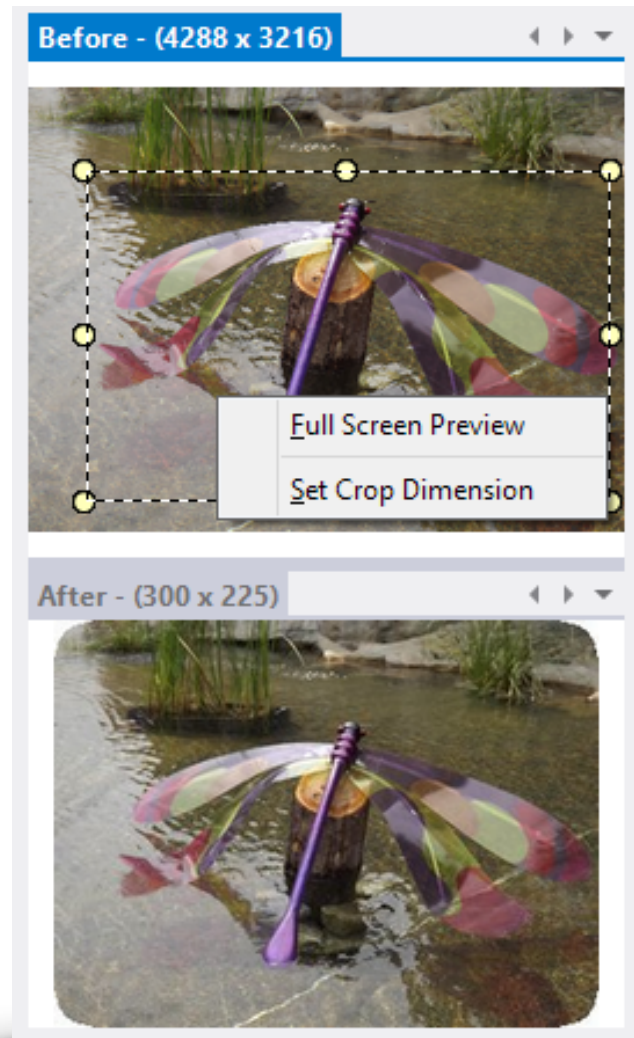


- ➔ **Save Images In** - This would be where the Processed Images would be saved from the main resizing. Use Save In button to select a folder or create a new folder to save the processed images in. You can use the macro [Source Folder]\ to save the images in the original folder. Use the Drop Down Menu to select the last five used folder.
- ➔ **Retain Folder Structure** - When you use the Load Folders or Drag and Drop to import files and check the Retain Folder Structure, the processed images would be saved in the new folder while retaining the original sub folder structure. If this option is unchecked,
- ➔ **AutoDetect Orientation via EXIF** - When this option is checked, all JPEG images loaded to the file list would have their EXIF header evaluated to determine the orientation setting added by your digital camera and the appropriate orientation to turn the images would be reflected in the Orientation column. If no EXIF Orientation entry is found in the image or this option is unchecked, the Orientation would be set to As Is.
- ➔ **Show Processed Images After Processing** - When this option is checked, the processed images would show up in the After Preview window otherwise it would be left blank. When unchecked, both the Before Preview and After Preview window would not be populated
- ➔ **Enable Change Preview** - When you double-click the filename in the file listing, it would show up in the Preview Windows. When the Enable Change Preview is checked, the image would go through the entire processing and the preview image would show up in the After Preview Window. Otherwise only the Before Preview would show up the original image. When unchecked, the thumbnails on the File Listing would not be loaded.
- ➔ **Do Filename Change Only** - When this option is checked, the files would only be renamed using the settings in the Filename Changer otherwise both the image processing and filename changer would be performed.

To enable changing the filenames of any file types, check this option prior to using the Load Files or Load Folders option. When this option is unchecked, only supported files can be loaded to the File Listing.

- ➡ **Enable Filename Changer** - The Filename Changer settings would allow you to define how the output filename would be renamed. If this option is unchecked, the filename changer would just use the filename in the New Filename column. The file extension may change based on the Image Format settings.
- ➡ **Memory Usage** - This option allows you to determine where you want the image processing to be performed in. There are three options, Auto, In Memory and On Disk. In Memory would mean that all image processing would be performed in the computer's available memory which is fast but this might not be optimal when you are processing very huge images. The On Disk option would use the hard drive as the working space for image processing and thus free out some memory for other tasks, this method works best when processing huge images but is much slower. The Auto option would evaluate the available free memory space and the image file size and determines the best option to select on an image to image basis.
- ➡ **Dark Mode UI** - Option to switch between Dark and Light mode.

Before Preview and After Preview



The Before Preview Window serves two purposes, one is to allow you to preview the original images and it allows you to set the crop dimensions for when the Resizing Method is set to By Cropping.

Setting Crop Dimension

Double click on the filename on the file listing to bring up the image in the Before Preview Window.

Select the first point and drag till the rectangle is around the part of the image you want to crop within the Before Preview Window. Once you done that, bring up the contextual menu by doing a right mouse click and select Set Crop Dimension. This will automatically fill in the Width, Height, Crop X Axis and Crop Y Axis in the Image Settings.

Perform a Full Image Preview

Both the Before and After Preview window would show you a small representation of the actual image. You would be able to view the full size image by first bringing up the contextual windows using the right-mouse click and select Full Screen Preview. This option will work if there is already an image in the preview window you are selecting.

Command Line Parameters

This section is applicable to the Command Line and Server Editions and would not work in the standard mode.

The command line mode allows you to run Batch It Ultra from another applicable such as the Windows Scheduler, batch scripts or from your in-house application.

As the registration key works on a user wide basis, you can move the batchitultra.exe file anywhere on your computer. However, if you are running the 64 Bit version of Batch It Ultra, ensure that the file **ielib64.dll** accompanies the batchitultra.exe file or a copy is dropped into the \Windows\System32 folder. The 32 Bit version is a standalone exe file and do not require any accompanying dll file.

The Supported Command Line Parameters are

- ➡ **profile=**
- ➡ **deleteoriginal**
- ➡ **recursive**
- ➡ **autoexit**
- ➡ **minimize**
- ➡ **autostart**
- ➡ **register**

The essential parameters for each command line operation would look like this

`batchitultra [source folder + filename/wildcard] profile=[settings profile file]`

An example of a complete command line as follows

`t:\batchitultra "t:\images*.*)" profile="t:\resizeimagesto640.xml" autostart recursive`

In the command line, you can work with a single image file or process an entire folder of images. In order for the command line mode to work, you will need to include the full qualifying file path to either a particular file such as "t:\images\photo.jpg" or a particular image format such as "t:\images*.jpg" or all supported image files "t:\images*.*" .

If you just provide the source images file, all Batch It Ultra would do is to execute the application and search for the files in the provided folder in GUI mode and wait for your further instructions.

The profile would reference to the settings profile file you would want to use. Without which, the last used settings in Batch It Ultra would be used instead.

All references to filenames or folders must be enclosed in double quotes "" especially when there is spacing within the filenames or folder names. This is a Windows requirement as it would not be able to determine a spacing in the filename or path as opposed to a second

parameter in the list. Include spacing to separate one parameter to another. The parameters are case-insensitive.

Command Line Parameters Description

➡ **Original Image Path or Files**

To load an individual file or files, you would need to include the full qualifying file path and file names or to load a folders of images, you would need to include the full qualifying file path with the wildcard or full file extensions.

This would need to be the first parameter on the list. You can include a number of file names to the parameters separated by spacing.

➡ **Profile=**

Batch It Ultra v6 now uses the XML File format as the settings profile file and is not compatible with the prior version.

Use this option if you want to include different settings for the command line. If this is missing, the last used settings in Batch It Ultra would be used instead.

➡ **DeleteOriginal**

When this parameter is included, the original images would be deleted after the images have been processed.

➡ **Recursive**

When this parameter is included, all subfolders would be included in the search for supported image files based on the Filename parameters.

➡ **AutoExit**

The AutoExit parameter would instruct Batch It Ultra to exit after processing all the images on the list.

➡ **Minimize**

The Minimize parameter would minimize the application during processing. Otherwise, the application would show up in full screen.

➡ **AutoStart**

When this parameter is included, Batch It Ultra would begin the image processing right after all the images are loaded. In this mode, all pop-ups and notification would be suppressed.

➡ **Register**

To Register or upgrade from one mode of the application to a different license, using this parameter would pop up the Registration Window where you can enter the new Registered Name and Registration Key. The Register parameter can only be used on its own, i.e. **Batchitultra Register** .