



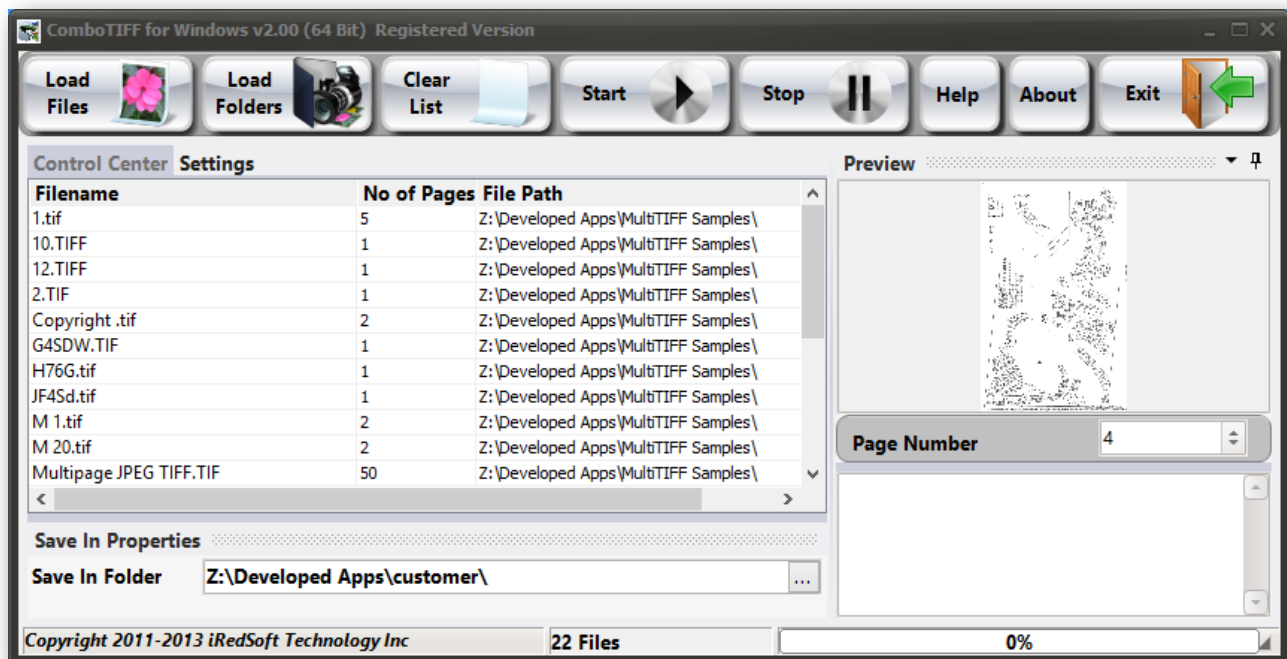
ComboTIFF for Windows v2

Table of Contents

Introduction	4
System Requirement	4
Version History	5
What's New	6
Purchase & Licensing Information	7
Contact Information	8
Application Components	9
Overview	9
Tool Bar	10
<i>Files Controls</i>	<i>10</i>
<i>Processing Controls</i>	<i>10</i>
<i>Other Controls</i>	<i>11</i>
Control Center	11
Save In Properties	11
Preview Panel	11
Settings Panel	13
Image Format	13
<i>Merge to a Single Multipages TIFF</i>	<i>14</i>
<i>Extract to Multiple Single Page TIFF, JPEG, PNG</i>	<i>14</i>
TIFF Compression	14
Resizing Method	15
<i>Downsize by Pixel</i>	<i>15</i>
<i>Downsize by Percentage</i>	<i>15</i>

<i>3/4x , 1/2x, 1/3x, 1/4x</i>	15
JPEG Quality (%)	15
Progressive JPEG	16
Dots Per Inch	16
Single Page File Name Format	16
Zero Padding	16
MultiTIFF Filename	16
Copyright Tag	17

Introduction



ComboTIFF for Windows is a Batch TIFF Tool which allows you to

- Merge JPG, PNG and TIFF images into a single Multipage TIFF document
- Combine several Multipage TIFFs into a single Multipage TIFF document
- Extract pages from a Multipage TIFF documents into single page JPG, PNG and TIFF
- Downsize JPG, PNG and TIFF files and pages by Pixel, Percentage and Ratio
- Convert JPG, PNG and TIFF images between the formats

CM ComboTIFF v1 was initially written on the Mac platform as a cross-platform application which supports both Windows and Mac OS X platform. This works great on the Mac OS X platform but the performance was not up to par with our standard for the Windows platform. We decided the best way to provide you with the best experience was to rewrite the application in the Windows platform. This allows us to support for the latest Windows 8 in both a 32 Bit and 64 Bit build. ComboTIFF for Windows v2 support Windows XP (32 Bit Only), Windows Vista (32 Bit and 64 Bit), Windows 7 (32 Bit and 64 Bit) and Windows 8 (32 Bit and 64 Bit).

System Requirement

- Intel or AMD based Dual Core CPU
- 2 Gigabytes RAM
- 1 Gigabyte Free Storage Space
- Supports Windows Vista (32 Bit and 64 Bit), Windows 7 (32 Bit and 64 Bit) , Windows 8 (32 Bit and 64 Bit), Windows 10 (32 Bit and 64 Bit).

ComboTIFF for Windows v2 does not support Windows RT based tablet or ARM based CPU.

Version History

- v2.0 - Initial Release
- v2.01 - Reworked the Downsize by Pixel routine which causes the ratio aspect not to be respected and in some cases, freezes the application
- v2.02 - Fixed a bug which causes the interface to show up the Windows background in the File Listing.
 - Added Drag and Drop Support
- v2.10 - Add ability to double click file to begin preview
 - Update Interface
 - Update Image Processing Engine
- v2.11 - Update Image Processing Engine
- v2.12 - Improved Memory Management
 - Updated Controls
 - Support for Windows 10
- v2.15 - New Code Sign Certificate
- v2.16 - Internal Code Optimisation
- v2.17 - Improved support for the Toolbar Icons.
- v2.18 - Improved Support for Load Folders method
 - Fixed bug which shows “Resizing from [x] x [x] to 0 x 0” when Resizing Method is set to “As Is”
 - Improved Checking to prevent faulty images from loading and crashing the application
- v2.19 - Fixes a bug which causes a memory leak at the File Dialog

What's New

When we developed ComboTIFF v1, we used a Mac based Development Tool which was capable of compiling to both Mac and Windows platform. The concept was novel to us and on paper looks like a good idea at the time.

Although the application works under Windows, we were not satisfied with the performance and the look and feel of the developed application. The interface looks like it was developed for the past. It was sluggish at times especially when it is performing the batch processing phase. As it was a cross-platform development tool, it uses common ground between the Mac and Windows platform which means that there is no optimization done for Windows.

We decided that it was unfair to our valued clients to continue marketing this application for Windows and took it out of the market to perform a complete redesign from ground up. This time using a Windows based Development Tool made in Windows for the Windows platform. This allows us to build optimized codes which works under the whole supported Windows platform but under 32 Bit and 64 Bit.

ComboTIFF for Windows v2 not only comes with a more Windows-centric interface, it comes with a brand new imaging engine build to take advantage of both the 32 Bit and 64 Bit platform. Naturally, we were able to build two editions of the same application, each would work in each respective Windows build. The 64 Bit edition would work only on a 64 Bit Edition of Windows 8, Windows 7, Windows Vista, Windows Server 2008 and Windows Server 2012. The 32 Bit edition on the other hand would work on all editions of Windows beginning from Windows XP up to Windows 8.

The core advantage of the 64 Bit edition is the ability to address greater than 4 gigabytes of memory and works a lot smoother and faster than the 32 Bit edition. All these because of the enhancements made to the underlying Windows platform.

Purchase & Licensing Information

ComboTIFF for Windows is offered as a Try-Before-You-Buy application. This allows you to effectively evaluate the application for a period of 14 days. During the first 14 days, you may use the application without charge to determine if the application meet your needs.

During the first 14 days, the application is not feature-locked and you will have full access to all the features of the application. There would be a nag screen before the application starts and after it exit.

After the 14 days, the application will stop functioning and you would need to purchase a license to continue using it or to use it beyond the purpose of evaluation.

ComboTIFF for Windows can be purchased through Plimus.com through our website at <http://www.batchimage.com/registration>

Upon registration, you would be provided with an unlock key via email which entitles you to use ComboTIFF for Windows on up to 3 computers provided that you are the exclusive user of the application. If you do not receive an email from our website via Plimus within 3 hours of your purchase, please contact us at sales@batchimage.com so we could look into the issue and provide you with a key. Do check your spam or trash folder to see if that email ended there.

The unlock key can be entered at 3 stages, when you start the application, when you exit the application and under the Help tab.

As a registered user, you would be entitled to unlimited usage of the application. All minor updates (ie v2.0 to v2.9) would be free and can be downloaded from our website and install on top of the existing installation.

Major Upgrade (ie v2 to v3) is not free but as a registered user, you would be entitled to a deep discount for the next major upgrade. However, upgrades are not compulsory and you are free to continue using the version of the application you purchase.

Major Upgrades are usually offered to support the newer operating system or changes with the operating system which requires a major overhaul.

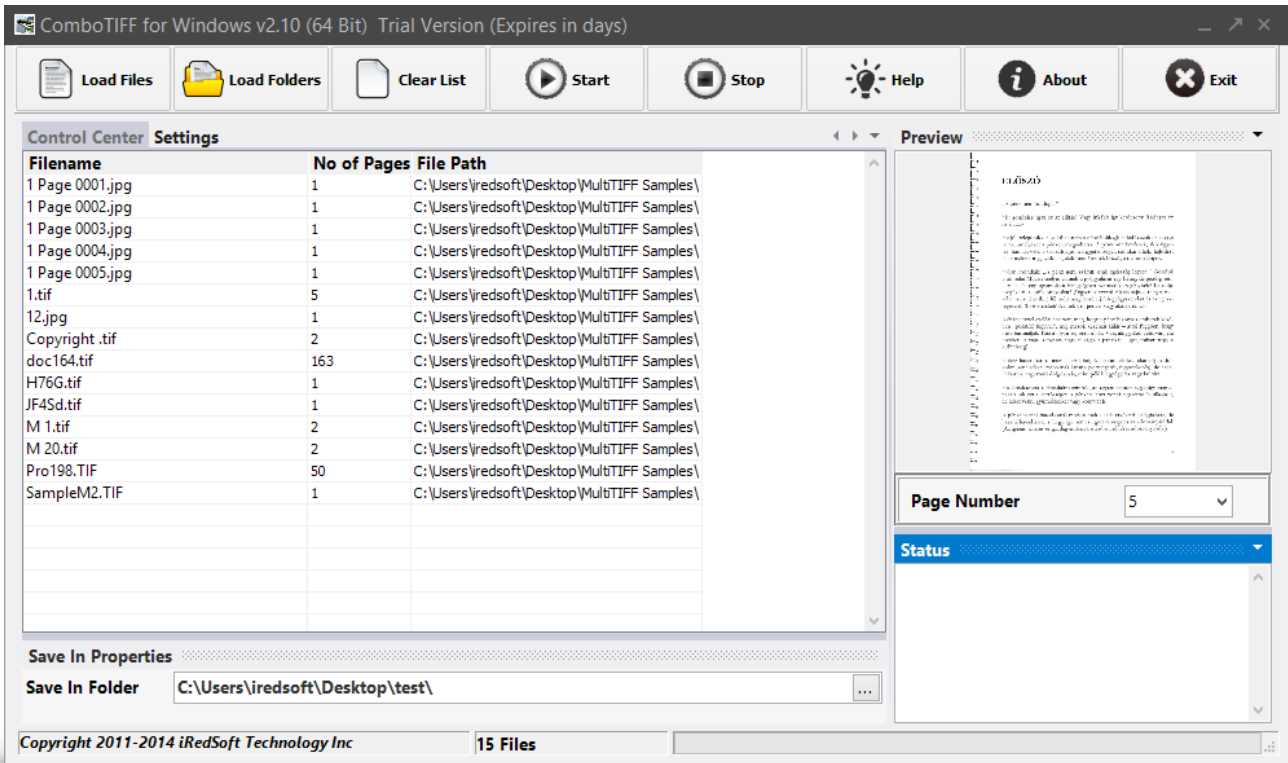
When you purchase ComboTIFF for Windows, you can use the registration keys for either the 32 Bit or 64 Bit editions of the application.

Contact Information

If you require any technical assistance, encountered any bugs or have an idea to enhance this application, feel free to contact us via email at support@batchimage.com . Typically we would not take more than 24 hours to reply to your queries.

If you lost your registration key, please contact us at sales@batchimage.com by providing us with your name, email address and your mailing address which were used when you purchase this application. Do also mention the name of the application as it would help us perform the necessary validation a lot quicker.

Application Components



Overview

When you first run ComboTIFF for Windows, you would be greeted with a screen similar to the above with a blank Control Center (File Listing) and Preview.

The top portion of the application is the Toolbar where you would find all the controls to add files to the list, clear the list, start and stop the conversion process and others. Noticeably missing is the standard Menu Bar which is not touch friendly. We wanted the application to be touch friendly especially for use on a touch screen computer such as a Windows 8 tablet or touch screen desktop or notebook computer. The buttons in the toolbar are made large enough for touch.

Below the Toolbar on the left hand side, you will see 2 tabs, Control Center and Settings.

The Control Center is what we called the File Listing. This is where the files which would be worked on would appear. It would present several information about the file such as the filename, number of pages in the file (files other than a Multipage TIFF would show up as "1" in this column and the folder in which the file resides in.

Settings is an important control as it lets you define how you want the files to be processed. More information on each of the setting controls could be found in a later section.

Below that tab would be the Save In Properties which defines the folder in which the processed files would be saved in.

Now moving to the right side, you have Preview on the top which would show a thumbnail of the pages or picture. You will also see a Page Number drop down box which would allow you to switch between the pages of the document as and when relevant.

Below the Preview is the Status Panel which will show you a textual progress of the processing.

In the Status Bar located at the bottom, you will also find a progress bar which will feedback the progress of the processing procedure.

The Control Center, Settings, Save In Properties, Status and Preview Panels can be undocked and docked as you like. Just drag the header of the panel would allow you to drag it out of its current position to be docked as you wished. The dock position would be reverted the next time you run the application.

Tool Bar



Files Controls

The three buttons which makes up this group are the Load Files, Load Folders and Clear List buttons.

Use Load Files to add one or more TIFF, PNG or JPG file to the Control Center. This function uses the Windows Open Dialog and may differ depending on the version of Windows you are using.

Load Folders allows you to select a Folder (or Directory) where all the TIFF, PNG and JPG files in them would be added to the Control Center. You will be prompted if you would want to include Sub Folders in the search. If you opt not to do so, only files from the folder you have selected would be included. If you opt to include, all sub folders in that selected folder would be scanned for relevant TIFF, PNG and JPG files to be included.

The loading process can take several seconds to several minutes and at which time, the application may appear to be frozen. At this stage, each of the tiff files it locates would be probe to see how many pages are found within the file. Other file formats does not support multiple pages would not be evaluated and the Number of Pages column would reflect as "1". Once the files are fully loaded to the list, you will see the count on the Status Bar.

Clear List remove all files on the list, clear the Preview Window and Status Panel.

Processing Controls

The next two buttons, Start and Stop, relates to the batch processing procedure.

Start would begin the processing of the files on the list using the settings on the Settings tab and would save the resultant file in the folder in the Save In Properties. Once the process starts, a preview of the page or file being worked on would show up in the Preview window and the Page Number in that window would also advance to reflect the page being shown. The Page Number drop down box is not functional at this stage as you would not be able to preview other pages while the processing is ongoing.

If you need to stop the processing for any reason, you can click on the Stop button. This will complete the current file processing before stopping the process. Doing so would prevent any file corruption if the file is not properly saved.

Other Controls

The next three buttons are Help, About and Exit.

Help would bring up this PDF Help File and the About would bring up the About Window.

You can exit the application by clicking on the Exit button or the X on the title bar. When you exit the application, it would save last used settings in the application. The settings would be reloaded the next time the application is run.

Control Center

The Control Center contains the listing of files which would be processed. You could make use of the contextual menu to preview or remove the file from the list. To do so, select the file on the list which you want to preview or remove and do a right-mouse click. This will bring up the contextual menu to allow you to do so. Alternatively, you can double click the filename to preview the document.

If you opt to merge all the files into a single file Multi-Page TIFF, you may want to be able to sort the order of the files. To do so, you can select the file on the Control Center and while holding down your left mouse button, drag it to the order you want the file to be in. You will see a red line which would reflect the position of where that selected file would be placed.

The Control Center allows you to drag and drop files from Windows Explorer into the application. All supported files would be imported into the file listing.

Save In Properties

This panel contains a single option which is the Save In Folder. This is where all the processed images and files would be saved in. Click on the “...” at the end of the edit box to select or create a folder.

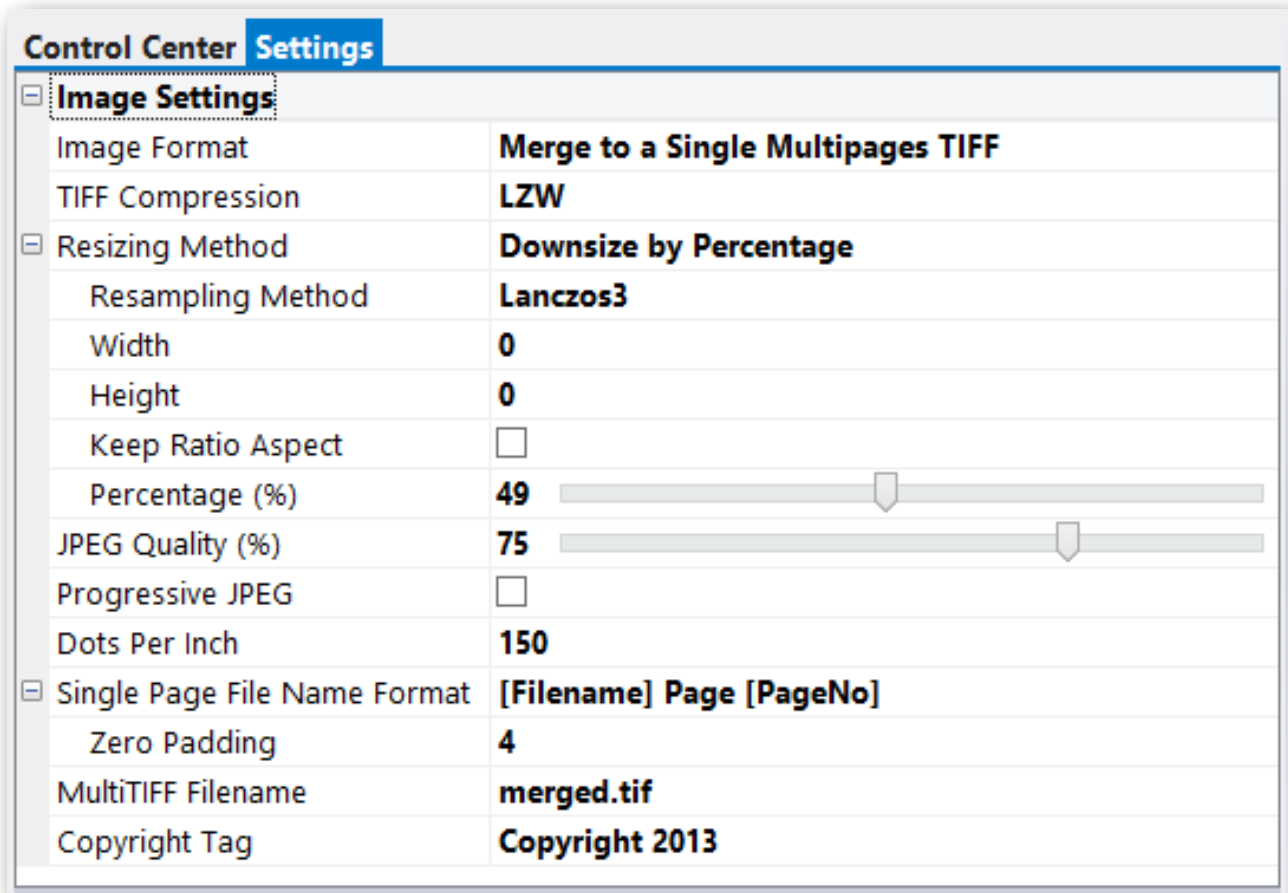
Preview Panel

The Preview Panel shows a thumbnail of the pages which is being worked on. When you select “Preview” in the Control Center, the image would show up in the Preview Windows and be defaulted to the first page. If the file is a Multi-Page TIFF file, you would be able to use the Page Number to navigate between the various pages in that file. The Preview

ComboTIFF for Windows

Image is set to render at twice the dimension of the preview window without any resampling applied, this will allow a much faster preview. This will not affect the actual quality of the original or processed file.

Settings Panel



All the settings are found on the Settings Tab. This allow you to determine how the files are to be processed.

Image Format

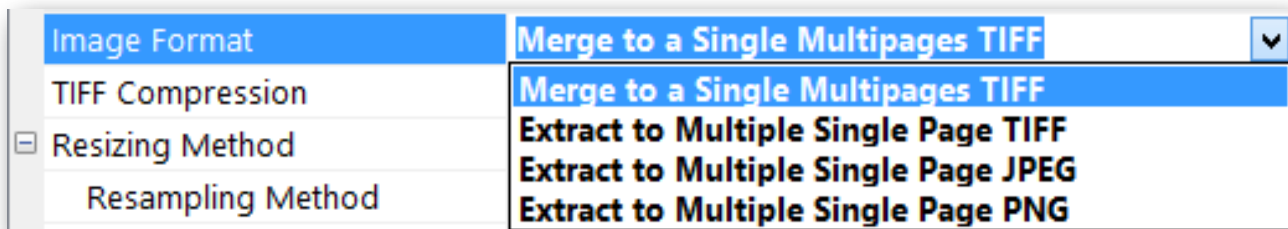


Image Format determines the output file format. As TIFF is the only option available here which can contain more than a single page, ComboTIFF for Windows offers the option to merge all the files into a single file Multi-Page TIFF.

The other 3 options would allow you to either convert from one format to another or extract all the pages from the Multi-Page TIFF files into single page files.

The Format supported are Multipage TIFF, Single Page TIFF, JPG and PNG.

Merge to a Single Multipages TIFF

All the files in the Control Center would be merged in the order as it would appear in the file list. If within the list, there are other multi-page tiffs, all the pages would be added in the same order as in the file.

The other settings relating to this option is the MultiTIFF Filename option. This will be used as the file name of the resultant TIFF file. You will need to include the “.TIF” or “.TIFF” file extension to the name. Once the process has completed, you would be able to find the file located in the folder specified by the Save In Folder option.

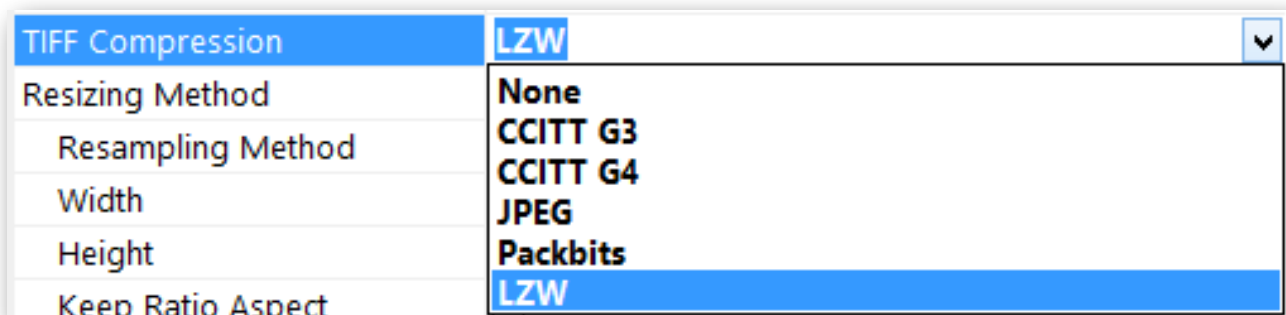
Extract to Multiple Single Page TIFF, JPEG, PNG

You can make use of these options to either extract pages from a Multi-Page TIFF file or convert images from one format to another.

The related settings would be the Single Page File Name Format and Zero Padding. This will determine how the resultant filename for each page would be named.

When extracting to JPEG, the JPEG Quality (%) and Progressive JPEG option are relevant.

TIFF Compression



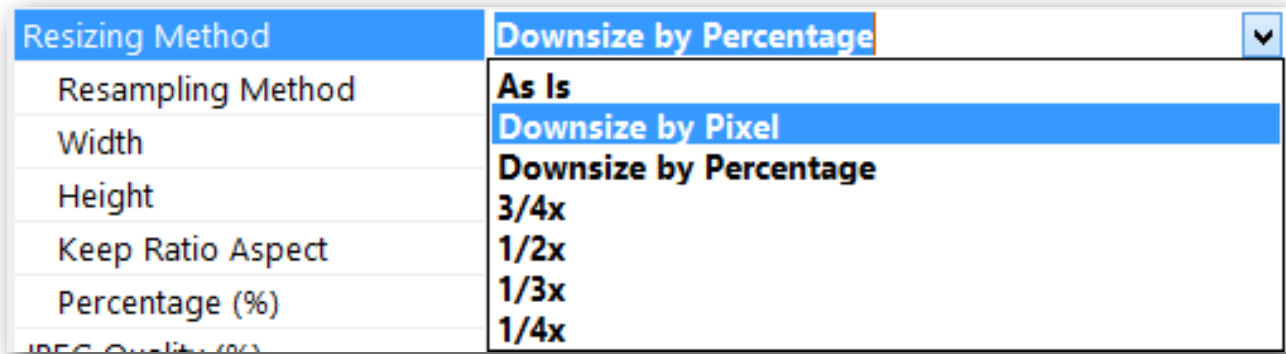
ComboTIFF for Windows offers 6 TIFF Compression methods which can be used where the resultant file is a TIFF file.

The options - None, CCITT G3, CCITT G4 and LZW are commonly supported TIFF Compression and should be used when you need to distribute the file to a wider audience.

Both Packbits and JPEG (v7.0) compressions are not supported under Windows XP but are supported under Windows Vista, Windows 7 and Windows 8.

If you select JPEG as your TIFF Compression, the JPEG Quality option would be use to set the output quality of the images in the TIFF file.

Resizing Method



There are 6 Resizing Method provided. “As Is” would keep the resultant file dimension exactly as the original.

Downsize by Pixel

This option allows you to determine the Width and Height in pixels. Any dimensions larger than the set Width and Height would be downsized to fit that dimension. Setting either one of the dimension as “0” would automatically set that dimension to that of the original image.

To retain Aspect Ratio, you will need to check the Keep Ratio Aspect option otherwise the images would be resized to the set width and height.

Relevant Related Options - Width, Height and Keep Ratio Aspect

Note : The Width and Height options are in pixels and would only support whole numbers.

Downsize by Percentage

This uses the Percentage Settings to set the dimensions of the resultant images. By using Downsize by Percentage, the aspect ratio would be respected.

Relevant Related Options - Percentage

3/4x , 1/2x, 1/3x, 1/4x

The following 4 options are quick ratio settings. All these options would have the aspect ratio respected.

JPEG Quality (%)

The higher the JPEG Quality, the better the image quality but the trade-off would be a larger file size. The opposite is true. Setting a balance JPEG Quality in the region of 70-75% would yield the best quality/file size ratio without noticeable image quality loss.

This option would also be used for TIFF Compression JPEG Algorithm.

Progressive JPEG

Progressive JPEG option would allow the JPEG images to progressively appear line by line over a web browser. This used to be an issue in the past where internet connections were slow. However with today's high speed connections, this may not be an issue.

Dots Per Inch

This option sets the the Dots Per Inch option in the images. Standard Image Viewers would typically ignore this settings and modern printers would perform their own interpolation when printing the images.

Single Page File Name Format

This option determines the resultant file name for the "Extract to Multiple Single Page TIFF/JPEG/PNG" option for each of the extracted pages. This format does not require you to tag on the file extension as it would be used for TIFF, JPEG and PNG files.

In order to making the filename meaningful, we introduce 3 different macro tags which can be used. They are [Filename], [PageNo] and [TotalPages].

[Filename] is the original filename without the file extension.

[PageNo] refers to the current page number of the extracted page.

[TotalPages] refers to the total pages in the original TIFF file.

You can use any or all of the above macros in any combination. Any text which are not one of this macro would be left untouched.

Note : If the original file contains only a single page, the Single Page File Name Format would be ignored and the original file name with the output extension would be appended to it.

Zero Padding

The Zero Padding option allows you to zero pad both the [PageNo] and [TotalPages] macros. If you set the Zero Padding to 4 and the number of digits is less than that, it would pad it with zeros in front of the numbers to make it to 4 digits. However if the Zero Padding is set to less than the number of digits, no Zero Padding would be applied.

MultiTIFF Filename

This would be the filename used if the Image Format is set to "Merge to a Single Multipages TIFF". You would be required to enter a full qualifying filename with the TIFF file extension. If this option is left blank, the filename "merged.tif" would be used.

Copyright Tag

This would add the text in this setting to the Copyright Properties of the TIFF and JPEG File.