

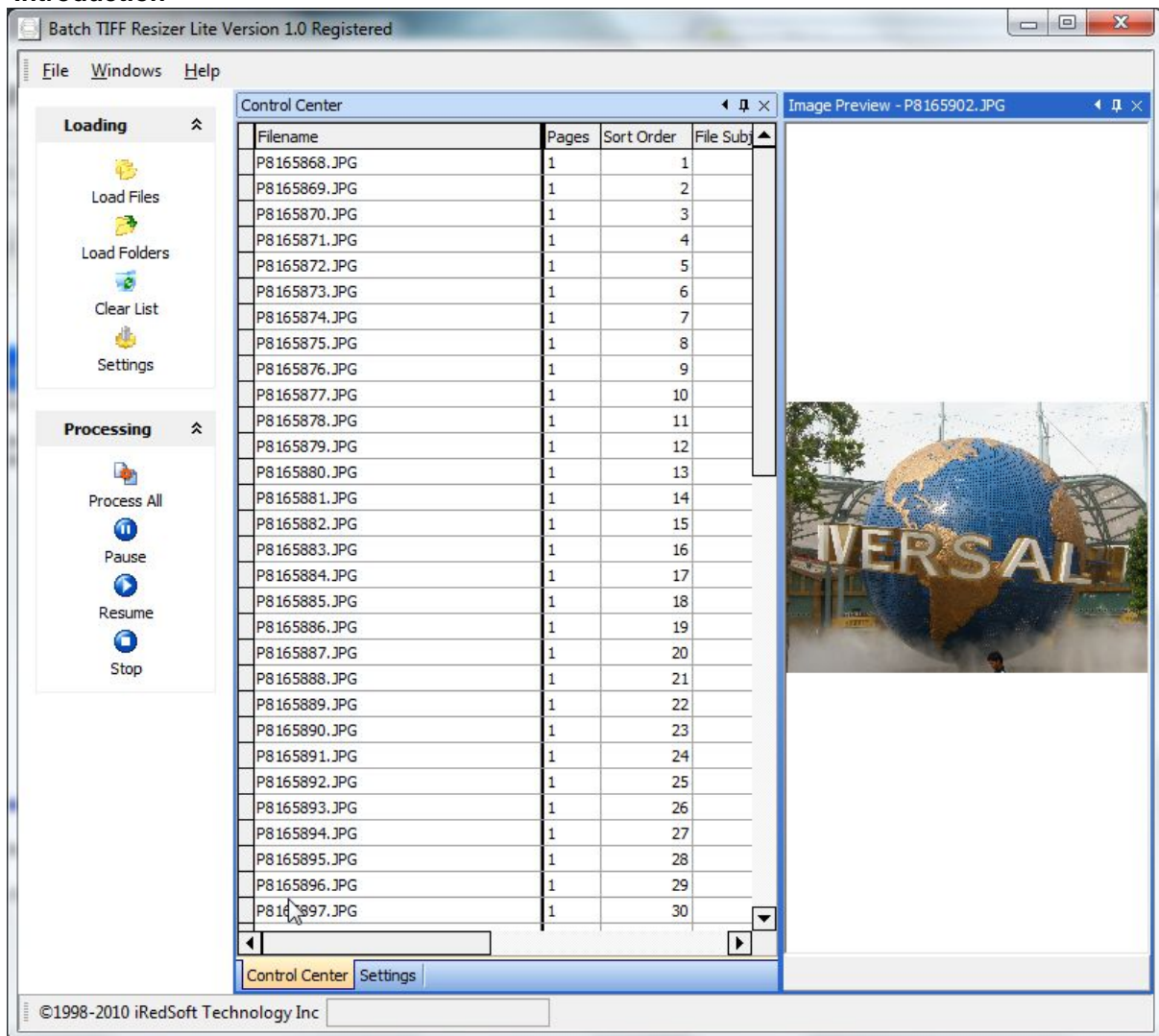
# Table of Contents

<b>Part I Introduction</b>	<b>3</b>
<b>Part II What's New</b>	<b>4</b>
<b>Part III Notes about the Supported File Formats</b>	<b>5</b>
<b>Part IV System Requirements</b>	<b>6</b>
<b>Part V Trial Version and Purchase Information</b>	<b>6</b>
<b>Part VI Settings Profile</b>	<b>7</b>
<b>Part VII Contact Information</b>	<b>8</b>
<b>Part VIII Good Practises</b>	<b>9</b>
<b>Part IX Product Description</b>	<b>10</b>
1 Controls .....	10
2 Control Center .....	11
3 Settings .....	12
4 Image Preview .....	18
5 Command Line Parameters .....	18
6 Application Docking System .....	19
7 Customize Settings .....	22
8 Error List .....	23
<b>Part X How To's and other Information</b>	<b>24</b>
1 Basic Procedure .....	24
2 Loading Images .....	25
3 Resizing Methods .....	25
4 Resizing to TIFF .....	26
5 Resizing to PDF .....	27
6 Resizing to JPEG .....	27
7 Resizing to JPEG 2000 .....	27
8 Resizing to BMP .....	28
9 Loading and Saving Profile .....	28
10 EPS and PS Support .....	28
<b>Part XI Frequently Asked Questions</b>	<b>29</b>

<b>1</b>	<b>Where can I find Program Updates .....</b>	<b>29</b>
<b>2</b>	<b>Where do I report Bugs ? .....</b>	<b>29</b>
<b>3</b>	<b>Can I request for new features ? .....</b>	<b>30</b>
<b>4</b>	<b>What is your upgrade Policy ? .....</b>	<b>30</b>
<b>5</b>	<b>Is thie License Transferable ? .....</b>	<b>31</b>
<b>6</b>	<b>I purchase multiple licenses but was only provided with one key. ....</b>	<b>31</b>
<b>7</b>	<b>I want to register the program for a 3rd party. ....</b>	<b>31</b>
	<b>Index</b>	<b>0</b>

# 1 Introduction

## Introduction



Batch TIFF Resizer is a specialized batch image resizer which handles single and multi-pages TIFF image formats. Because of its multi-page support, it is increasingly use to store scanned documents such as architecture plans, contracts, invoices and the likes. This program is designed with these uses in mind.

Batch TIFF Resizer is built around our policy of developing simple to use but powerful application.

The program allows you to :-

- Import TIFF, JPEG, BMP, PNG, PS\* and EPS\* images by File, by Folder or through the Drag and Drop method
- Import Unicode Filenames
- Resize images by Pixels, Percentage, Ratio and Physical Page Sizes
- Change Color Depth to 1 bit, 4 bits, 8 bits or 24 bits Images.
- Change Image Dots per Inch settings

- Add Text Captioning on Images
- Add XP EXIF Tag for Keywords and Subjects to JPEG and TIFF Files
- Add Keywords and Subjects to generated PDF Files
- Add PDF Encryption and Password Controls
- Add Control to Allow/Disallow Copying and Printing of PDF Files
- Rotate Image Pages
- Sharpen Images
- Generate Grayscale Images
- Work with multiple folders at the same time
- Save resultant images as TIFF ,Acrobat PDF, PNG, JPEG, JPEG 2000, BMP file Format
- Combine several TIFFs into a Single Multipage TIFF or PDF File.
- Spilt up multi-page TIFF file into multiple Single TIFF File.
- Support Command Line Parameters \*\*New in v2.07

\*Support for Import of PS and EPS files is made possible if Ghost Script is installed and linked to the program.

## 2 What's New

### What's New

- V2.0      New Release
- Improved Performance in Generating PDF Files
  - Support Generation of Large PDF Files
  - Added Support for PDF Keywords and Subject
  - Added Support for XP EXIF Keywords and Subject
  - Added PNG Output Support
  - Added Control over support of BMP, JPEG, TIFF G4 and TIFF G3 Images in PDF
  - New Improved Imaging Engine
  - Unicode Support
- V2.01    - Improved Speed in Loading Files
- Fixed Drag and Drop Issues
- V2.02    - Updated Imaging Engine
- Support Large TIFF Images
  - Move Last Used Settings from the Default INI File to the System Registry
- V2.03    - Moved System Registry details from Local Machine to Current User Entry
- V2.04    - Fixed Bug which causes to stop functioning under certain situation
- V2.05    - Fixed Bug which causes TIFF Images to save without Compression when using G4,G3 and G1 Compression and Color Depth set to greater than 1 bit.
- V2.06    - Added Resampling Method for all image resizing apart from PDF.
- V2.07    - Added Command Line Parameter Support
- Updated Imaging Engine
- V2.08    - Added 'DeleteOriginal' Command Line Parameter
- V2.09    - Improve Speed of Loading Images to Control Center.

V2.10 - Added 'Start Page From' properties which allows the user to determine which page in the multi-tiff file to determine as the first page.

## 3 Notes about the Supported File Formats

### Notes about the Supported File Formats

The program supports six input format (TIFF, JPEG, BMP, PNG, EPS and PS) and six output image formats (TIFF, PDF, BMP, PNG, JPEG and JPEG2000).

#### TIFF Image Format

The Tagged Image File Format (TIFF) is a flexible image format which supports black and white, grayscale and color images. The support for multi-pages makes it increasingly popular to store documents in a single file package which is exchangeable between a wide number of computer systems.

The TIFF image format supports high quality rendering of document files such as contractual documents, accounting papers and technical drawings used by architectures and product development.

Because of the vast number of compression algorithm available for the TIFF format, Batch TIFF Resizer is unable to support all formats apart from the popular available format such as CCITT G1, CCITT G3, CCITT G4, LZW, Pack Bits, TIFF JPEG and the Uncompressed format. The program does not create JPEG preview images.

#### PDF File Format

The Portable Document File (PDF) format is now increasingly popular as the format created by Adobe is supported by all popular operating systems. Most operating system such as Windows and Apple Mac OS have integrated support for viewing PDF files.

Batch TIFF Resizer currently supports only the Portrait Page format. All images are downsized to fit the page size indicated.

PDF files created are not text searchable since they renders from TIFF image format.

#### JPEG Image Format

The JPEG Image format is amongst the most popular image format use by digital cameras, on the internet and other media. All commonly available Image Viewer or Web Browser would support it natively.

#### JPEG 2000 Image Format

This is an updated version of the JPEG format which supports better image quality through the used of the wavelet compression technology.

#### BMP Image Format

The Windows Bitmap (BMP) image format is the default image format used by Microsoft Windows. This format uses a lossless algorithm which results in a high quality image but the main overhead would be the file size.

### **PNG Image Format**

At the height of the Unisys claim for licensing to the LZW algorithm used for GIF Images, the industry decided to come out with a new image format called Portable Network Graphic (PNG). This image format was to have been a replacement for GIF with improved features such as higher image quality without any licensing issues.

### **EPS Image Format**

The Encapsulated Postscript File is a self-contained which contains postscript documents.

### **PS Image Format**

The PostScript (PS) is a page description language and programming language used primarily in the electronic and desktop publishing areas. Unlike JPEG, Postscript is Vector based which consists of lines instead of dots in the case of raster image format such as TIFF, JPG, BMP or PNG.

## **4 System Requirements**

### **System Requirements**

This program is written specifically for the Windows Operating System and we make no guarantees that it would work on any other environment but it is known to work in the emulated mode on the Mac.

The program was designed on a Windows XP Pro system and tested and certified to function on Windows 7, Windows VISTA, Windows 98 Second Edition, Windows ME, Windows XP Home, Windows XP Pro, Windows NT 4, Windows 2000 (all editions), Windows 2003 (all editions) and Windows 2008.

Although the program would work on any system which runs any of the above system, Image Processing can be quite CPU intensive and as such recommends a minimum of a Pentium 400Mhz CPU running with at least 128mb RAM and 10mb of free harddisk space. You will require more harddisk space if you have a lot of images to process.

TIFF Images can get quite huge especially if you are processing Color TIFF images. This may affect the speed of processing.

The program can function in conjunction with other running programs but if you doing extensive processing and work with huge image files, it is advisable to make it the only running program. The program would utilize all unused CPU resources when processing images.

## **5 Trial Version and Purchase Information**

### **Trial Version and Purchase Information**

Batch TIFF Resizer is released as 'Try-before-you-buy' software. This allows you to effectively evaluate the program for a period of twenty-one (21) days. During the first 21 days, you may use the program without charge to determine if the program meet your needs.

At this stage, the program is not feature-locked and you have full access to all the functions of the program. During this stage, you will encounter nag screens at start up and when you exit from the program. The program will terminate itself after 3 hours of continuous usage. At the end of the 21

days, the program will no longer function without a license key.

The trial version allows you to process up to 50 images per program run. All Generated PDF files would have a Trial Version tag encoded in the first page which cannot be removed.

If you feel that you will benefit from the usage of this program, you are required to purchase a license key online. The standard retail price of the program starts from \$49.95. Please refer to <http://www.batchimage.com/registration.html> for updated prices and volume discounts as we may have special pricing once in a while.

We do not handle sales in-house and engage Plimus.com Inc to handle all sales orders. Please do not send us any cash, checks, purchase orders or any form of payment as they would be discarded. Plimus.com has a comprehensive ordering system which allows online secured Credit Card purchases, phone-in, mail-in, fax-in and wire transfer sales.

For the above mention payment methods, you would find the necessary information with their order page using the following links :

Single User and Standalone License (US\$45.95)  
<https://www.plimus.com/jsp/buynow.jsp?contractId=2552846>

Server Deployment and Automated Process License (US\$75.95)  
<https://www.plimus.com/jsp/buynow.jsp?contractId=2865842>

For volume discounts please refer to the secured order form.

This is a virtual product and you will be sent the Registration Key via email once your order has been approved. For a typical online credit card purchase, you should receive the keys within 3 hours of the purchase. This is handled by their automated order processing system which operates 24/7.

As a registered user, you will be entitled to unrestricted usage of the program for as long as you require. The license will not time out. You will be entitled to all minor updates (all point updates eg v2.0 to v2.5) and bug fixes. You will be provided with a deep discount to upgrade the program (eg v2.0 to v3.0).

All minor updates can be applied by downloading the latest trial version from our website and installing it over the prior installation. The license key would work for the new updates.

### **SOHO and Personal Users**

Although a license key is required for each computer the program is installed on, we make an exception to SOHO and Personal users who may have several computers. As long as the program is used 80% of the time by the same user, you may install it on up to 3 computers without any additional cost.

This does not apply to usage of the program in a commercial environment. You will need to purchase additional licenses in accordance to the number of users. We do offer discount pricing for purchase of multiple licenses.

## **6 Settings Profile**

### **Settings Profile**

The Settings Profile file are basically INI (Text Readable) Files which contains all the settings used in the program. It does not contain any other information about your computer or files which you are working on.

This serves two primary purposes. One would be to allow you to save different settings profiles for your different processing jobs so you would not need to make changes to the settings each time you want to initiate the job. Secondly when you encounter any hiccups with the programs, we may require you to send us the setting profile file to determine the root cause of the issues. This allows us to test the settings you used and be better equipped to provide you with a solution or issue a bug fix when necessary.

### **Saving Setting Profile**

At the Application Menu, select 'File' and 'Save Profile', this will prompt you for a location and filename to save the setting profile file in. Under Windows Vista and 7, if you are not running this program as an Administrator, you will not be permitted to save it in the Program Files folders and the program would require you to save it in a user created folder.

### **Load Setting Profile**

At the Application Menu, select 'File' and 'Load Profile', this will prompt you for a location and filename to load the setting profile file from.

### **Default Settings**

Prior to Batch It Pro v2.02, the program would store all current settings in the Default.ini file in the Program Folder or in the User Profile Folder. From v2.02, we made changes to store this settings in the System Registry inline with the changes in Windows Vista and Windows 7.

### **Migration of v2 default settings to v2.02**

You can migrate the settings, by loading the default.ini settings in the Application folder or the User Profile folder and do a File/Exit. This will load the last used settings and save it to the System Registry.

### **Migration of v1 default settings to the current version**

Batch It Pro v2 uses the same format of the Settings Profile File from v1 and thus a simple modification would allow you to use it with the current version.

Open up the settings profile file in a text editor such as Windows Notepad. Locate the first line of the settings file which reads [CrunchIt] and change it to [BatchTIFFResizer2] . Once you make the change, save the file and it would be ready for use in Batch It Pro v2.

## **7 Contact Information**

### **Contact Information**

#### **Pre-Sales**

If you have any inquiries of a technical nature, such as how to use certain functions or to setting ideas, feel free to contact us at [support@batchimage.com](mailto:support@batchimage.com) . As we do maintain support for several programs, it would allow us to address the issue specifically if you include the name of the program with your email correspondence.

If it relates to purchasing options, you may contact our sales department at [sales@batchimage.com](mailto:sales@batchimage.com)

### **Misplaced your registration key ?**

We understand that mishaps do occur due to several reasons and you may need to reinstall your program, if that happens you could contact [sales@batchimage.com](mailto:sales@batchimage.com) if you have your Order ID and request for a resend of your purchase information. This will contain a fresh new registration key.

If you do not have your Order ID and/or changed your email address, please contact us at [sales@batchimage.com](mailto:sales@batchimage.com) with the following information for validation. Once your order as been verified, we will request Regsoft.com to resend you your registration details.

The information required are :-

- Product you registered for
- Name (at the point of registration)
- Email Address (at the point of registration)
- New Email Address
- Mailing Address (at the point of registration)
- Postal/Zip Code (at the point of registration)

Please do not send us your credit card numbers or payment related issues as we do not have those information and it is unsafe to send them via email.

### **Changing Email Address ?**

Please contact us at [sales@batchimage.com](mailto:sales@batchimage.com) if you changed your email address. Although we respect your privacy and do not send you any emails if you do not request for them, we would send out emails when there is a major upgrade, when there is a serious bug issue which we have a fix for and when we have to change the registration key system and would need to send you the new key. If you do not update us, we would not be able to keep you informed.

### **Need a customized solution ?**

If you have a specific need which is not addressed by our programs, feel free to contact us at [sales@batchimage.com](mailto:sales@batchimage.com) for a custom solution. We would be able to piece altogether a program which would be tailored to your needs for an additional fee. Because our programs uses proprietary technologies, we would not be able to offer any source codes with this option.

## **8 Good Practises**

### **Good Practises**

It is a good practise to keep the target directory different from the original directory as any images processed would be overwritten and would not be retrievable.

Burn a good set of raw images to a recordable media such as a CD or DVD recordable so you could refer to them in the future when you need it.

It is always good to select a small number of images while you are testing different settings so as to reduce the time it takes before you see the results. Once you are happy with the settings, you may load the entire list of images for processing.

When exiting the program, click on File/Exit so that it would save all current settings and perform the necessary memory cleanup.

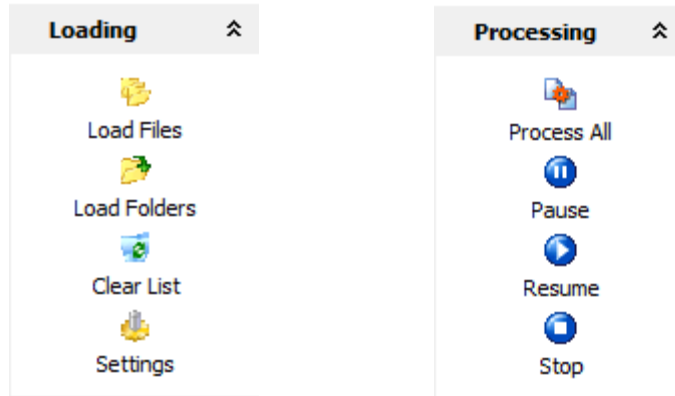
Although the program allows you to work directly with a digital camera, it is advisable to copy the

images to the harddisk and work from there. Digital camera uses battery to power up and if the battery runs low during image processing, it may result in data corruption on the camera media.

## 9 Product Description

### 9.1 Controls

#### Controls



Loading Controls

Processing Controls

The program comes with two sets of Controls on the left hand side panel. These includes the Loading Controls and the Processing Controls.

The Loading Controls are used for pre-processing change which includes loading images and changing image processing settings. Processing Controls are used to control the actual image conversion processes.

#### Loading Controls

Load Files

Use this function to load single or selective TIFF, BMP and JPEG Files. PS and EPS Files would be supported if Ghostscript is installed and linked to the Ghostscript Path in Settings.

Load Folders

To load folders and sub-folders, use this function.

Clear List

This clears the file listing and associated database system.

Settings

This brings up the settings page.

#### Processing Controls

Process All

This starts the image processing function based on the settings used.

Pause

This temporary pause the image processing function.

Resume

This resumes the process which has been paused.

Stop

This stops the image processing function which is currently active.

Note : When using the Pause or Stop function, the program will complete processing the current image before stopping. This is to prevent any damaged files especially when the image processes are not completed.

## 9.2 Control Center

### Control Center

Filename	Pages	Sort Order	File Subject	File Keywords
français,.JPG	1	1		
Вукова ћирилица.JPG	1	2		
עִבְרִית.JPG	1	3		
سواحلي.JPG	1	4		
हिन्दी.JPG	1	5		
ひらがな.JPG	1	6		
▶ 北方话.JPG	1	7		
조선말.JPG	1	8		
00021199.TIF	7	9		
0002119A.TIF	2	10		
0002119C.TIF	4	11		
0002119D.TIF	12	12		
000211A0.TIF	1	13		
000211BE.TIF	20	14		
0002131B.TIF	118	15		
PB 102803.JPG	1	16		
PB 102804.JPG	1	17		
PB 102805.JPG	1	18		

The Control Center shows the image details which would have been loaded and ready to be processed. The No of Pages refers to the total number of pages in the associated documents. Only TIFF images would show more a Page number greater than 1 if it contains multiple pages.

Clicking on the Filename would display it in the Image Preview screen.

### Sort Order

At initial load, the sort order would be populated with the index number of the images. The Sort Order can be changed by editing the sort order number to higher or lower than the current. Once you have the order of the images sorted, click on the header of the Sort Order to sort it based on the Sort Order field in an Ascending or Descending order.

All images would be processed based on the order as shown in Control Center.

### File Subject

This will propagate the Subject Properties in the PDF, JPEG or TIFF Files.

### File Keywords

This will propagate the Keywords Properties in the PDF, JPEG or TIFF Files.

If the 'Merge All as Single File' option is selected and the Image Format is set to 'TIFF' or 'PDF', the last subject and keywords would be used for the file.

If a multiple page tiff is set to spilt to single image files, the subject and keywords for that particular file would be propagated to all the individual generated pages.

## 9.3 Settings

### Settings

Image Properties	
Image Format	TIFF
Resampling Method	Lanczos3
Resizing Method	1/2x
Maximum Width	0
Maximum Height	0
Keep Dimension Ratio Aspect	<input checked="" type="checkbox"/>
Resize Percentage	50
Page Size	B4
TIFF Compression	Pack Bits
TIFF ColorSpace	As Is
PDF Compression	Maximum
PDF Page Orientation	Portrait
PDF Encryption Level	128 Bits
PDF User Password	
PDF Owner Password	
PDF Author Name	
PDF Image Format	JPEG
PDF JPEG Quality	85
PDF Allow Copy	<input type="checkbox"/>
PDF Allow Printing	<input checked="" type="checkbox"/>
Keep IPTC Header	<input type="checkbox"/>
Dots Per Inch	100
Image Orientation	As Is
Image Manipulation	As Is
Color Depth	As Is
Gray Scale	<input checked="" type="checkbox"/>

<b>Captioning</b>	
<input type="checkbox"/> Text Caption	
Font Name	
Font Size	8
Font Style	Regular
Font Color	Black
Text Drop Shadow	<input type="checkbox"/>
<input type="checkbox"/> Text Alignment	None
Caption At	None
<b>Files Properties</b>	
Target Directory/Folder	[Source Directory]\resized\
Keep Sub-directory Structure	<input type="checkbox"/>
Merge All as Single File	<input type="checkbox"/>
<input type="checkbox"/> Convert Multi-Page Tiff to Single Page	<input type="checkbox"/>
Single Page Filename Structure	{Filename} Page {PageNo}
Zero Padding	7
Page Sort Order	Ascending
Overlay Images to Single Page	<input type="checkbox"/>
Start Page From	0
<b>EPS Properties</b>	
Ghost Script Path	

The settings would determine the outcome of the processed images. There are three sections to Settings. One relating to the image processing and the other for file saving operations.

The Chevron at the Settings Header allows you to Expand or Collapse that category. Clicking on the Upward-pointing Chevron would Collapse the category and the Downward-pointing Chevron will Expand the category.

Looking at the Settings Page, you will notice that some options have '-' or '+' on the left-hand side of the option. The '-' allows you to collapse all related options and the '+' allows you to expand the previously closed options.

## Image Properties

### Image Format

The program supports output of TIFF, Adobe Acrobat PDF, Single JPEG, JPEG 2000, BMP and PNG Images format.

The PDF supports the Page Size parameter. Since the TIFF and PDF form factor is different, you will need to determine the Page Size to use.

The generated PDF file is based on PDF Format v1.4 which is compatible with Acrobat Reader v5 and above.

JPEG Image Format only supports single page and when you select this option, if the program encounters a multi-page TIFF, it will split each page as a single page.

Resampling Method	<p>Batch TIFF Resizer offer 14 resampling methods. Each offering a different algorithm in getting you that picture perfect resized images.</p> <p>We will spare you the complex mathematical computation in the various resampling method and just mentioned that each method would employ certain degree of color matching and averaging to select the best match. A degree of blur effect would be added to reduce the effects of pixelization.</p> <p>For Best Image Quality use, Lanczos3, Hermite, Bell, BSpline, Mitchell, Nearest, Bilinear or Bicubic.</p> <p>If you need a faster image loading especially for small thumbnails where image quality is not that critical, use Triange, Linear or FastLinear.</p> <p>For Black on White image, use ProjectBW and for White on Black image, use ProjectWB. These basically set the images to black and white images which is good for black and white documents.</p>
JPEG/JPEG 2000/PNG Quality	This option would set the Image Quality when Image Format is set to PNG, JPEG or JPEG 2000
Resizing Method	<p>The program offers 4 resizing methods which includes</p> <ol style="list-style-type: none"> <li>1) By Pixels which uses the Maximum Width/Height and Keep Dimension Ratio Aspect parameters.</li> <li>2) By Percentage which uses the Resize Percentage parameter.</li> <li>3) By Page Size which uses the Page Size parameter.</li> <li>4) By ratios (1/4x, 1/3x, 1/2x, 2/3x and 3/4x)</li> </ol>
Maximum Width	This defines the maximum permitted width in pixels. Any images with width higher than the specified maximum would be downsize to it. Any dimension smaller than the maximum would be untouched.
Maximum Height	This defines the maximum permitted height in pixels. Any images with height higher than the specified maximum would be downsize to it. Any dimension smaller would not be touched.
Keep Dimension Ratio Aspect	<p>When this option is selected, the image would be dimension proportionate. If unchecked, the image would all be upsize or downsize to the maximum width and height parameter.</p> <p>Note : If you check this option, you can keep either maximum height or width as 0 and have the program determine the appropriate dimension.</p>
Resize Percentage	Resize Percentage Used in conjunction with Resizing by Percentage, it allows you to define the output size in relations to the original image size. The options available starts from 25% to 100% with an increment of 5%.
Page Size	This is used when Resizing Method is set to Page Size
TIFF Compression	The program currently G4, G3, G1, LZW, Pack Bits, TIFF JPEG and Uncompressed TIFF compression.

The LZW and TIFF JPEG Compression would yield the highest compression and thus the smallest file size for non-Black and White Images. For Black and White images, using one of the CCITT Fax Compression such as G4, G3 and G1 algorithm would yield a smaller file size. Using G4, G3 and G1 will automatically convert the image to black and white images.

TIFF JPEG is not a commonly support TIFF Compression Algorithm and may not work in all viewers.

TIFF JPEG Quality	This is used in conjunction with the TIFF JPEG Compression to set the image quality. The lower the quality the smaller the file size.
TIFF Color Space	Supports CMYK, RGB, RGB Palette, YCbCr and CIELab Colorspace
PDF Compression	This determines the Compression used in the generation of the PDF File. The current options are Normal, Maximum and Fastest.
PDF Page Orientation	Determine if Portrait or Landscape Orientation would be used.
PDF Encryption Level	This defines the encryption level to secure the PDF File. The options are 40 Bits (Low Level Encryption) and 128 Bits (High Level Encryption). If possible, use the higher encryption level unless it is not permitted in the country of the target audience.
PDF User Password	This password would allow you to password protect the PDF to allow only authorized personnels with the required password to access it.
PDF Owner Password	This password would allow for full access to the document. This will only work if the PDF User Password is also used.
PDF Author Name	Use in Conjunction with the PDF file generation for the Author Properties.
PDF Image Format	This defines the image format that would be used to embed into the PDF file. Batch TIFF Resizer supports Color Images (JPEG and BMP) and Monochrome Images (TIFF G3 and TIFF G4) formats.
PDF JPEG Quality	This determines the JPEG Quality for the embedded JPEG images if the PDF Image Format option is set to JPEG.
PDF Allow Copy	If checked, this will allow the viewer to copy the contents of the PDF File including text and images. If this is unchecked, the viewer would not be able to copy the contents or modify it in any way.
PDF Allow Printing	If checked, this will enable the Print Function in the PDF Viewer otherwise printing would not be permitted.
Keep IPTC Header	If checked, this will retain all IPTC headers in the file if the format remains in TIFF. All settings are lost with PDF as it is not supported.
Dots Per Inch	This determines the output Dots Per Inch settings for TIFF images. DPI is not used with the PDF file.
Image Orientation	The options allows you to convert the pages within the TIFF file from portrait to landscape or vice versa by allowing you to rotate it 90° clockwise or 90° counter-clockwise or 180° or Flip Down or Flip Left.

Image Manipulation	This allows you to apply sharpening to the images.
Color Depth	This option allows you to determine the output image color depths. The supported Color Depth includes :- 1) 1 bit - 2 colors 2) 4 bits - 16 colors 3) 8 bits - 256 colors 4) 24 bits - 16.7 million colors.
Gray Scale	Causes the images to be converted to Grayscale Images.

### Captioning Properties

Text Caption	This option allows you to determine the text caption.
Font Name	This option defines the font type to use.
Font Size	This option defines the font size.
Font Style	This option defines the font style. The available options are Regular / Italic / Bold / Bold and Italic
Font Color	This option defines the font color.
Text Drop Shadow	This option allows you to add a drop shadow under the text.
Text Alignment	This option defines where the caption would be added on the page. Setting to None would disable the captioning feature.
Caption At	This option allows to determine if the caption should be added to all pages, first or last page.

### Files Proprieties

Target Directory/Folder	This defines the location where processed images would be saved in. If you want the processed image files to be saved in the same directory as the original, use the dropdown box and select '[Source Directory]' .
Keep Sub-directory Structure	Check this option if you are working with multiple subdirectories at the same time and you want all images stored in the same sub directory structure. By unchecking this, all images would be stored in the same folder. Any images with the same file name would be overwritten with the last file with the same file name.
Merge All as Single File	When this option is checked, all files in the Control Center would be merged as a single Multi-page TIFF or PDF File.  The order of merging would be dependent on the order in the Control Center. You may use the Sort Order column to determine the sort order. Click on the header of the Sort Order to sort it based on the column in an Ascending or Descending order.
Convert Multi-Page Tiff to Single Page	With this option checked, all multi-page tiff which are loaded in the control page would be converted to multiple single tiff files. The filename follows the

following format :-

Original Filename Page XX.tif

Note : This option cannot be enabled with the 'Merge All as Single File' option.

#### Zero Padding

When converting from a Multi-Page TIFF to a Single Page TIFF or JPEG, each of the generated image files would retain the original file name with the page number. The Zero Padding feature allows you to define how much zero padding you want for this page number. Any number length shorter than the Zero Padding length would be padded with '0'. This will allow for ease of sorting in Windows Explorer.

#### Single Page Filename Structure

This allows you to change the filename of the individual TIFF or JPEG pages.

There are several macros which can be used :-

**{Filename}** - The Original Filename

**{Page}** - The Page Number. This will be Zero Padded based on the 'Zero Padding' settings.

**{SubFolder}** - The Original Subfolder name.

**{YYYY}** - Current 4 Digits Year (eg 2007)

**{YY}** - Current 2 Digits Year (eg 07)

**{MMMM}** - Current Month in Full (eg march)

**{MMM}** - Current Month in Short Form (eg mar)

**{MM}** - Current Month in Digits (eg 03)

**{DDDD}** - Current Day in Full (eg Monday)

**{DDD}** - Current Day in Short Form (eg Mon)

**{DD}** - Current Day in Digits (eg 27)

\* Note 1 : The appropriate file extension would be tagged to the filename automatically.

\* Note 2 : All Date in Full are in Uppercase

\* Note 3 : All characters, apart from macros, will be added as is.

#### Page Sort Order

This is used in conjunction with the {Page} parameter in the Single Page Filename Structure. Typically the 'Ascending' settings should be used, the individual pages in the TIFF images would be processed from the first page to the last with the first page tags with page 1 and so on.

Setting this parameter to 'Descending' will tag the last page with page number 1.

#### Overlay Images to Single Page

With this option, all pages are merged as multiple page layers into a single page.

#### Start Page From

This option allows you to determine which page to start processing from a Multi-Page TIFF. If the Start Page From is set higher than the actual number of pages of the TIFF file, it would be ignored. This has no effect on non-TIFF Files.

#### EPS Properties

#### Ghost Script Path

Batch TIFF Resizer does not have a built-in facility to import Postscript (PS)

or Encapsulated Postscript (EPS) images and relies on Ghostscript in order to support it.

If this parameter is left blank, you will not be able to import PS or EPS images.

You can download a General Public License (GPL) copy of Ghostscript either from

[http://sourceforge.net/project/showfiles.php?group\\_id=1897&package\\_id=108733](http://sourceforge.net/project/showfiles.php?group_id=1897&package_id=108733) or our website at <http://www.batchimage.com/download/g857w32.exe>

By default, Ghostscript GPL v8.57 would be installed in C:\Program Files\gs\gs8.57\bin\ . You can either use gswin32c.exe or gswin32.exe .

## 9.4 Image Preview

### Image Preview



The image preview module would allow you to preview the image file. Click on the image file name in Control Center would bring up the image in the Image preview module.

If the image has more than a single page, you can use the Page Number drop down box to navigate through the various pages.

During Image processing, the Image Preview Module would also the pages being processed. You could use it to monitor the progress.

## 9.5 Command Line Parameters

### Command Line Parameters **\*\*New in v2.07**

The Command Line Parameter options allow you to use Batch TIFF Resizer in the 'Command Prompt' mode, run as an automated scheduled process using Windows Built-in 'Scheduled Tasks' or

called by an external program.

#### Command Line Parameters

`batchtiffresizer.exe "k:\my photos\*.jpg" profile="k:\my profiles\convertjpgtotiff.ini" recursive deleteoriginal autostart autoexit minimize`

The first option (eg "k:\my photos\\*.jpg") defines the folder and file type to include in the process. You can use the wildcard \*.\* to include all file types, define a file type such as the provided example to only search for images with that file extension or a specific file name.

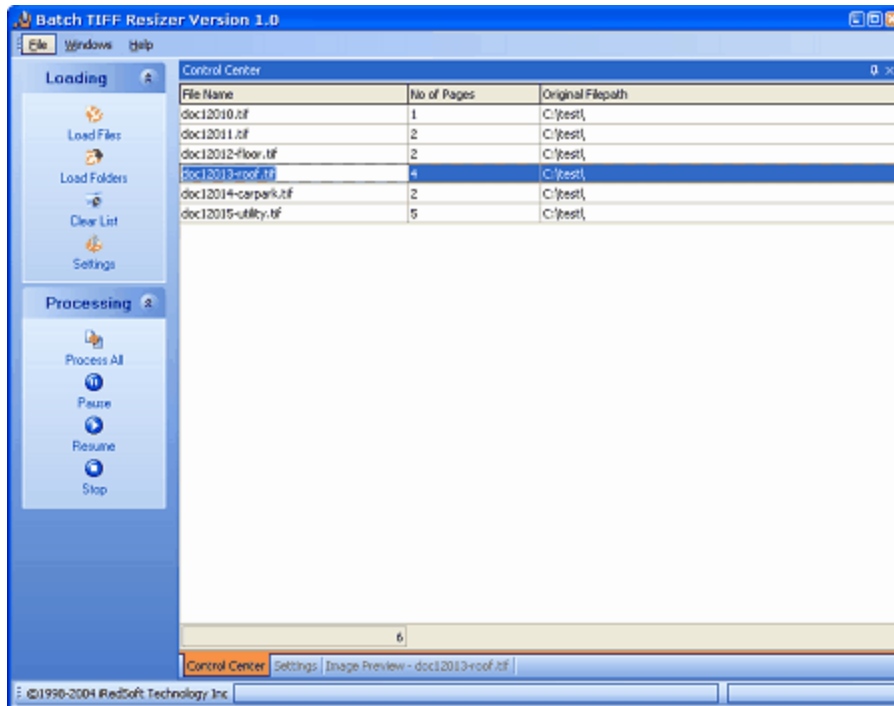
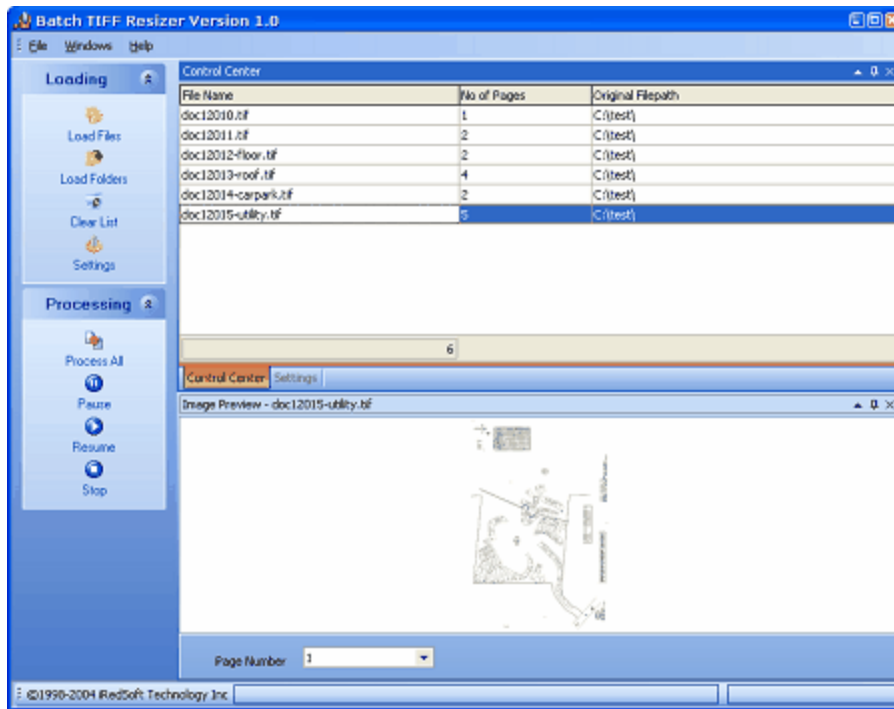
<b>Profile=</b>	When this option is used with an existing Settings Profile, the program would use the settings used in that profile to process the images. If this option is not used, the last used profile would be used.
<b>Recursive</b>	When used, Batch TIFF Resizer would add all sub folders under the included folder in the search for images to include in the process.
<b>DeleteOriginal</b>	This option would delete the original images after they are being processed.
<b>AutoStart</b>	When included, Batch TIFF Resizer would begin processing all the found images automatically. Without this option, the program would just wait for your intervention.
<b>AutoExit</b>	When paired with AutoStart option, the program would exit after processing all the images.
<b>Minimize</b>	This option would enable the program to minimize and hide otherwise it would maximize after loading the images.

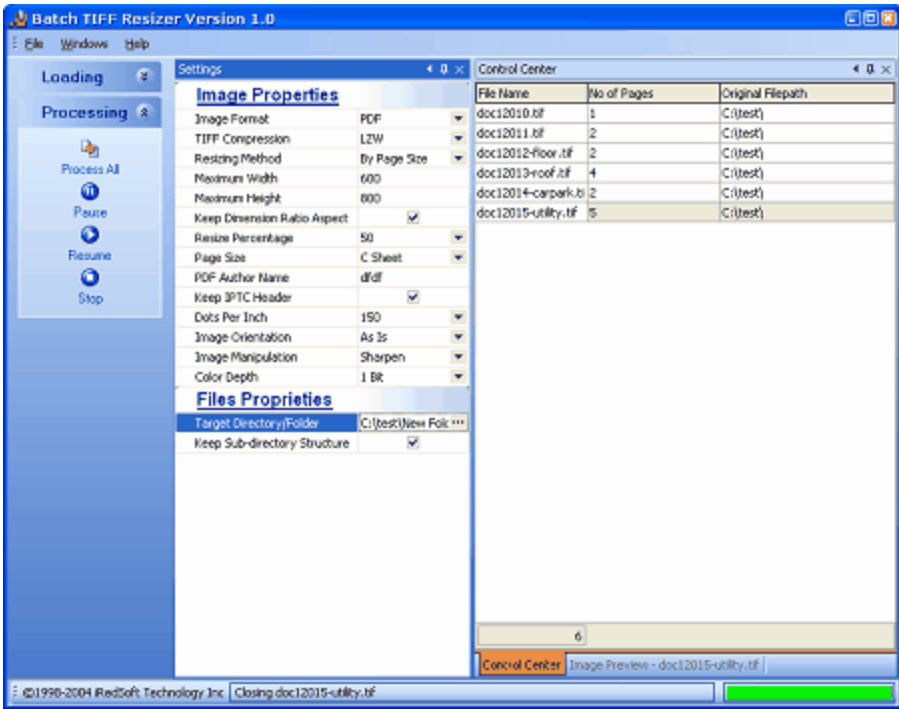
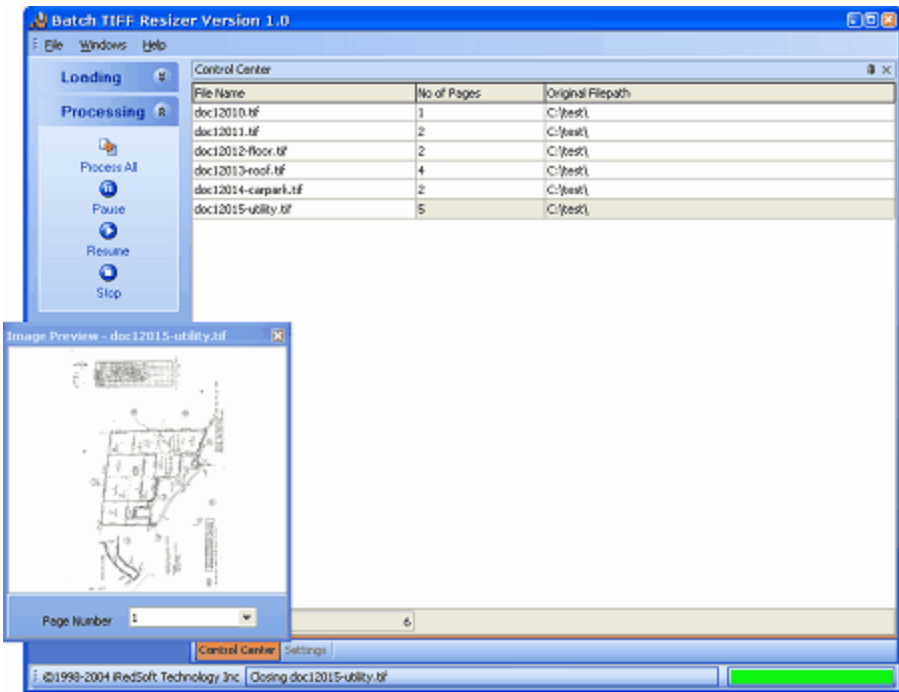
## 9.6 Application Docking System

### Application Docking System

The program allows you to shift interface around to cater to your individual usage style.

Here are some of the possibilities





**Docking Information**


The first step to docking would be to undock a page. You can do this by holding the left-mouse button down when selecting the page name.

By default this would be the bottom tab on the default page design. While holding the mouse button down, drag the page out and it will immediately be undocked.

To dock a page, hold the left-mouse button down when selecting the page name and dragging into the program to where you want it to dock.

Note : Both the Image Preview and Settings can be undocked. The Control Center however cannot be undocked. You may dock the pages to the Left, Right, Top, Bottom or as a Tab in the program.

### Docking Tags

On the top of each page you will see . These are docking tags which could alter the behavior of the pages.

The first tag would maximize or minimize the page depending on where it is at. It basically would close up the other pages. This will appear only if at least two pages are stacked on top of each other or side by side.

The second tag would determine if the page would appear static at where it is at. If the Pin is pointing down, it would remain static and if it is pointing towards the left, it will close up. Moving the mouse over the page name would open the page. Clicking on the page at the back would close it.

The third tag would remove the page from the screen. If you want to bring it back, select Windows and the Page Name and it will reappear.

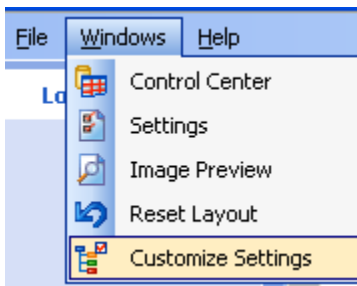
Note : If at any point, you want to revert to the original layout, select Windows and Reset Layout.

## 9.7 Customize Settings

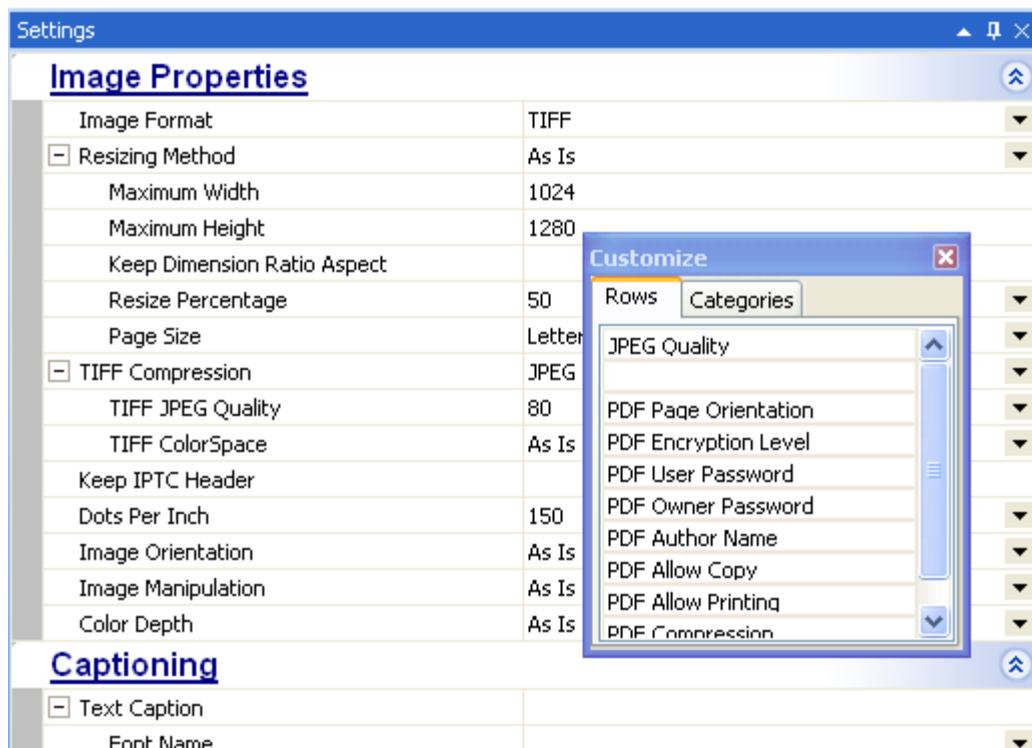
### Customize Settings

The Program allows you to customize the settings page to hide or rearrange the settings to enable you to work more efficiently.

To Customize the Settings Page, click on **Windows** followed by **Customize Settings**.



When you are in the Customization Mode, you will see Customize Windows appearing in the Settings as below



To Rearrange the options, you can click on the option and while holding down the left-mouse button, drag it to where you want it to be located and release the mouse button.

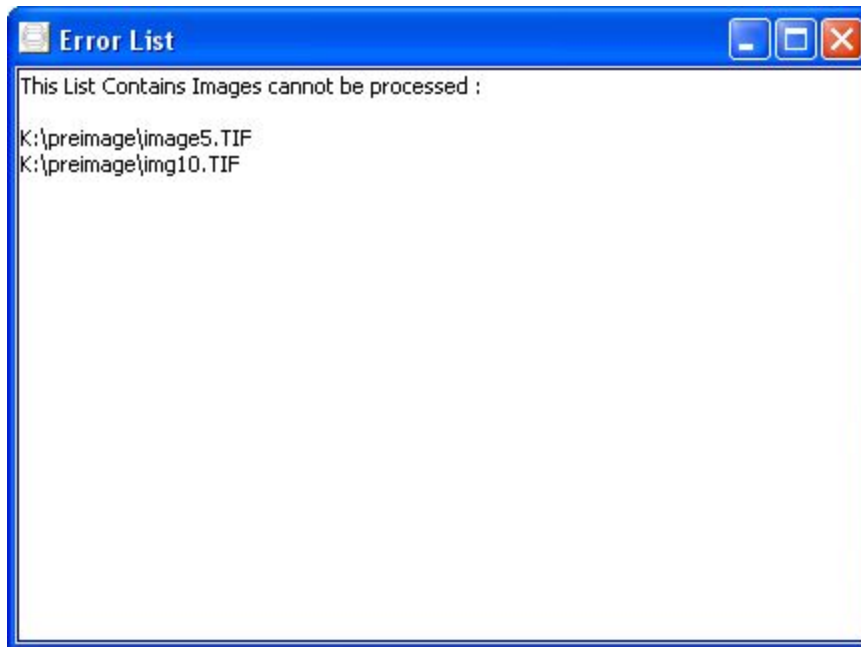
To Hide the options, you can click on the option and while holding down the left-mouse button, drag it into the 'Rows' section of the 'Customize' Window. This will hide the option from the Settings Windows.

To exit the customization mode, close the 'Customize' Window by clicking on the red 'X' on its header. The options are only saved when you click on File/Exit or using the Process All option.

If you want to revert to the original layout, exit from the program and go to the folder where Batch TIFF Resizer is installed and delete the 'settinglayout.ini' file before restarting the program.

## 9.8 Error List

### Error List



Typically, you will not see this page. This will only appear if the program encounters images which are invalid and cannot be processed.

To save the list, do a right-mouse click and select **Save List** . This will save the error list in a Text File format.

## 10 How To's and other Information

### 10.1 Basic Procedure

Here is a Basic Step-by-Step on how to use the program.

- 1) Run Batch TIFF Resizer
- 2) Use **Load Files** if you want to select a few images within the folder or use **Load Folders** to load all the supported images into the program.
- 3) Go to the **Settings** tab and change the settings to meet your requirements.

\* If you plan to reuse the Settings, you can do a File/Save Profile to save the settings and use the File/Load Profile to reuse the previously saved settings.

- 4) Click **Process All** to begin the conversion process.

That's All.

If there is any images which could not be processed, you will be presented with an page containing the images which cannot be processed.

## 10.2 Loading Images

### Loading Images

Batch TIFF Resizer offer 3 ways to load up images.

### Load Files

By using the Load Files option, it allows you to select file or files from a specific directory into the program.

To select a single image file, just click on the file name and Open which will load that file to the file listing.

To select batch of image files, click on the first file name on the list then while holding down the SHIFT key select the last image on the list with your left-mouse button. Once you got the list you want, click on Open which would load the selected list into the file listing.

To import selective image files, click on the first file name on the list then while holding down the CTRL key select all the subsequent image files you want to include. Once you got the list you want, click on Open which would load the selected list into the file listing.

### Load Folders

If you want to load up entire folders, use the Load Folders method. This will allow you to select the folder which you want all images to be imported from. This supports loading from an entire folder with the option to include all sub folders.

### Drag and Drop

This works with Windows Explorer through My Computer on the Windows XP desktop. You could select image files and folders and drop them into the Control Center.

Note : With Windows XP and above, you could change the file listing view (for Load Files and Windows Explorer) by clicking on the last icon at the icon bar and selecting the View Menu to Thumbnails.

## 10.3 Resizing Methods

### Resizing Methods

The program offers 4 image resizing methods. Each offers many similarities but there are some differences.

The four methods are Resizing by Pixels, Resizing by Percentage, Resizing by Page Size and by Ratios.

### Resizing by Pixels

This method uses the combination of the following parameters :-

- 1) Maximum Width
- 2) Maximum Height
- 3) Keep Dimension Ratio Aspect Resizing by Pixels allows you to downsize images to meet a specific

set maximum dimension.

Images which are smaller than the maximum are not resize when the Keep Dimension Ratio Aspect option is selected. Upsizing of images are only supported when the Dimension Ratio Aspect are disabled. This method is useful if you are processing images for on-screen viewing since images must conform to a specific dimension format.

If you have source images which have the same dimension ratio aspect and you want all to be of the same resultant size, this method would be appropriate for it.

For example, if you have images/pages that comes as 800 x 600 and 640 x 480 pixels dimension and you need them downsized to 320 x 240. Using this method will ensure all images downsize to that dimension.

### **Resizing by Percentage**

This method uses the Resize Percentage parameter. All images would be downsize based on the resizing percentage. The percentage would be in relations to the original image size. Resizing by Percentage will automatically maintain Dimension Ratio Aspect.

### **Resizing by Page Size**

This method allows you to upsize or downsize the pages depending on the specified page size. Currently only portrait page format is supported. All pages would be sized to meet the dimension ratio aspect. All attempts will be made to ensure that all images fill the page size.

This method is the only supported resizing method for PDF creation.

Note : Upsizing images or pages may result in image quality degrading due to the lack of image details.

### **Resizing by Ratio**

This method allows you to downsize the pages. This is very similar to the Resizing by Percentage. The ratio supported are 1/4x to 3/4x.

## **10.4 Resizing to TIFF**

### **Resizing to TIFF**

The steps listed below are the minimum needed to downsize images to the TIFF image format.

1) Load Images using either the Load Files, Load Folders or Drag and Drop them from Windows Explorer

Under Settings,

2) Set the Image Format to TIFF

3) Select a TIFF Image Format

4) Define a Resizing Method and its related parameters

5) Set the Target Directory/Folder to a directory different from the source folder.

6) Click Process All

## 10.5 Resizing to PDF

### Resizing to PDF

The steps listed below are the minimum needed to downsize images to the PDF file format.

1) Load Images using either the Load Files, Load Folders or Drag and Drop them from Windows Explorer

Under Settings,

2) Set the Image Format to PDF

3) Select Resizing Method to Resize by Page Size

4) Select a Page Size to use

5) Set the Target Directory/Folder to a directory different from the source folder.

6) Click Process All

## 10.6 Resizing to JPEG

### Resizing to JPEG

The steps listed below are the minimum needed to downsize images to the JPEG image file format.

1) Load Images using either the Load Files, Load Folders or Drag and Drop them from Windows Explorer

Under Settings,

2) Set the Image Format to JPEG

3) Select the JPEG Quality option.

4) Define the Resizing Method.

5) Set the Target Directory/Folder to a directory different from the source folder.

6) Click Process All

## 10.7 Resizing to JPEG 2000

### Resizing to JPEG 2000

The steps listed below are the minimum needed to downsize images to the JPEG 2000 image file format.

1) Load Images using either the Load Files, Load Folders or Drag and Drop them from Windows Explorer

Under Settings,

2) Set the Image Format to JPEG 2000

- 3) Select the JPEG Quality option.
- 4) Define the Resizing Method.
- 5) Set the Target Directory/Folder to a directory different from the source folder.
- 6) Click Process All

## 10.8 Resizing to BMP

### Resizing to BMP

The steps listed below are the minimum needed to downsize images to the BMP image file format.

- 1) Load Images using either the Load Files, Load Folders or Drag and Drop them from Windows Explorer

Under Settings,

- 2) Set the Image Format to BMP
- 3) Define the Resizing Method.
- 4) Set the Target Directory/Folder to a directory different from the source folder.
- 5) Click Process All

## 10.9 Loading and Saving Profile

### Loading and Saving Profile

Under File, there is two options, Load Profile and Save Profile.

Profiles are text readable file which contains program setting information. It does not contain any information about you or your computer. Profiles can be useful if you want to apply different settings to different files. You could save a profile file for settings to create TIFF images and another for creating PDF files.

When you do Save Profile, it will take a snapshot of all the settings at that point of time. You can return to a previously saved Profile by doing Load Profile. By default, all Profile files have a .ini file extension. You may change it to anything you want.

The system uses two profiles which exists in the program folder. The default.ini contains the current settings and are saved when you do a File/Exit and loaded when you first launch the program. The other profile is layout.ini which specify how the program interface looks like.

When you request for technical support, we may ask you to send us the profile file so that we could recreate the settings on our computer.

## 10.10 EPS and PS Support

### Encapsulated Postscript (EPS) and Postscript (PS) Support

Batch TIFF Resizer does not support EPS or PS image format natively and requires you to install Ghostscript in order to import them into the program.

What the program does is to pass the EPS or PS images to Ghostscript which would convert it to PNG image format which the program can handle. After which, Batch TIFF Resizer would take over. The whole process would be transparent and you would not need to do anything apart from downloading, installing and linking Ghostscript to Batch TIFF Resizer.

Here are the steps needed to support EPS and/or PS images in Batch TIFF Resizer

1) Download Ghostscript from either [http://sourceforge.net/project/showfiles.php?group\\_id=1897&package\\_id=108733](http://sourceforge.net/project/showfiles.php?group_id=1897&package_id=108733) or from our website at <http://www.batchimage.com/download/gswin32.exe> . There are several versions of Ghostscript available for the different operating systems. Currently, only the .exe version of the program works with our Windows based Batch TIFF Resizer.

2) Once you downloaded Ghostscript, you will need to install it by running the program which you downloaded. It is best to use the default settings. Typically, it would be installed under **C:\Program Files\gs\** folder.

3) Next run Batch TIFF Resizer and go to the Settings tab and scroll all the way down to the EPS Properties. Click on the '...' in the Ghost Script Path setting and look for the **gswin32.exe** or **gswin32c.exe** file. By default, this should be installed under **C:\Program Files\gs\gs8.xx\bin\** . xx being the Ghostscript version number. If you install the Ghostscript version found on our website, this would be installed under **C:\Program Files\gs\gs8.57\bin\** .

Once you select the file and click Open, EPS and PS support would be included. Now if you do an Load Files, Load Folders or use the Drag and Drop method, EPS and PS images would be supported. Without linking to the gswin32.exe or gswin32c.exe file, you will not have the EPS or PS image support.

That is all. You will only need to do this once and do not need to repeat this step to support EPS and PS images.

## 11 Frequently Asked Questions

### 11.1 Where can I find Program Updates

#### Where can I find Program Updates ?

To simplify updates, we do not maintain separate update files. All you will need to do is to download the latest trial version from our website and install it over the current program. This will update all necessary files.

The trial and registered version of the program is one and the same program. It is the registration key which is installed in the system registry which would change the program mode. So as long as you do not change computers, the registration key would work on all future Batch TIFF Resizer.

We respect your privacy and would not send you any email in regards to program updates.

You may refer to our website at <http://www.batchimage.com/download> for updated versions.

### 11.2 Where do I report Bugs ?

#### Where do I report Bugs ?

As much as we want to deliver a perfectly running program and we would perform extensive tests on the programs before we release them, bugs do occur. As we are supporting a wide spectrum of operating systems and computer set up, it is impossible to test on all combinations and problem may occur.

If you encounter a problem, see if you can replicate the error on another computer. If the problem is not replicated, you may want to perform a scandisk, defrag and possibly a virus scan to ensure that the system is in good working condition.

There are times in which an external program may interfere with our program and as such during the test close all other running program and test the program exclusively.

If you can replicate the error, drop us an email at [support@batchimage.com](mailto:support@batchimage.com) with the following information

- Program you are running
- Version of the Program in question
- Your Operating System
- Information about your hardware configuration (eg CPU type/speed, remaining harddisk space, RAM)
- The error message
- When the Error occurs (eg at program start up, while running the program or when you close the program)
- The Configuration File (You will find a file called default.ini in the installed directory, this contain all settings for the program)

When requested, you may send us the image file in question via email. Our mailbox would reject any file attachment over 1mb so write to us if you are sending us a file larger than that size.

We will try to replicate the error on our end and issue a bug fix as soon as we have a solution.

## 11.3 Can I request for new features ?

### Can I request for New Features ?

Our programs are created with our customers in mind and build the program based on their requests and usage pattern. If there are any features which you believe the mass audience would benefit from and if it does not require a massive reengineering of the system, we could place it on the to-do-list. We however do not guarantee that every requests would be added.

Do understand that we are working on a limited budget and manpower and as such we will do our best to implement them to the best of our abilities. We are keeping the cost of the product down so we apologize if we are unable to implement the requested changes.

If there are features you require which we cannot implement, feel free to request for a custom quote and we could develop a program to cater exclusively to your needs for a fee.

For all inquiries, you may contact us at [support@batchimage.com](mailto:support@batchimage.com)

## 11.4 What is your upgrade Policy ?

### What is your Upgrade Policy ?

When you purchase a license, you will be entitled to all minor updates and bug fixes for that version free-of-charge. All you need to do is to download and install the program from our website at

<http://www.batchimage.com/download>. However, major upgrades from version 2.x to 3.x would not be covered by the free offer. As a registered user, you will be entitled to purchase the new version for a discounted price.

The typical lifespan of a version is two years from the initial version launch. You may however use the program indefinitely. All upgrades are optional.

Each major upgrade would involved rewriting the program from bottom up to support a new imaging engine, a new operating system or to implement new features which cannot be implemented with the old framework.

Our policy would be if you purchase our program 30 days prior to the next major upgrade, you will be entitled to a free major upgrade. But we are liberal on that fact and may extend the offer to purchases made before the 30 days.

## 11.5 Is this License Transferable ?

### Is this License Transferable ?

If you purchase a license, it is tied in to the registered name as such the license is not transferable to a 3rd party with or without a fee. You will be required to purchase an additional license for the new user.

If however the program is registered to a business, the usage may be reassigned to another employee within the same organization.

## 11.6 I purchase multiple licenses but was only provided with one key.

### I purchase multiple licenses but was only provided with one key.

Regsoft.com's system is capable of generating a single license key irregardless of the number of licenses purchased. You may use the same key for the number of systems you are registered for.

If you require separate keys, drop us an email at [sales@batchimage.com](mailto:sales@batchimage.com) with your request. Please indicate the Order ID and the name you want the licenses to be registered under and we will manually generate the keys for you.

## 11.7 I want to register the program for a 3rd party.

### I want to register the program for a 3rd party.

By default, Regsoft.com would use the Registered Name as a name to generate the license key. If you are registering the program for a 3rd party such as for a friend, relative or even for your company, you may elect on the registration form that this would be a gift order. When requested, enter the 3rd party information or company name and it will assign the registration key to whoever you nominate.

If after ordering, you receive the key for the wrong name, you may write to us at [sales@batchimage.com](mailto:sales@batchimage.com) and indicate the Order ID and the name you want to register and we will manually generate the key.